

**This document contains:**

- The Event Covid-19 risk assessment and risk mitigation plan in accordance with the [FEI Policy for Enhanced Competition Safety during the Covid-19 Pandemic](#)
- The Event Approved Schedule

*Given the current covid-19 situation, please note that the FEI's approval of a Schedule should not be taken as an absolute guarantee that the Event will definitely go ahead. The decision whether the Event can take place must be made by the OC and NF in close consultation with the applicable domestic government and public health authorities. It is the responsibility of each Participant to check the status of the Event prior to planning his/her travel to the Event.*

## Mass gathering risk assessment for COVID-19: addendum for sporting events

The questions below will enable sport event organizers to review the additional considerations specific to sporting events involving mass gatherings, and thus inform their risk assessment of COVID-19 associated with the event. This will help organizers to understand and manage any additional risk from COVID-19.

The risk assessment should be reviewed and reassessed regularly during the planning phase and updated immediately prior to the transition to the operational phase, especially in light of the rapidly evolving nature of the outbreak. Reference should be made to the latest technical guidance and situation reports on the WHO website.

The risk assessment for COVID-19 associated with the sporting event must be coordinated and integrated with the host country's national risk assessment for COVID-19. The person completing the questionnaire should include input from the local public health authorities, consult WHO's latest technical guidance and ensure that there is an up-to-date evaluation of the epidemiological situation.

### Risk assessment

Please answer Yes (1) or No (0) to the following questions to determine a risk assessment score that incorporates factors specific to mass gathering sporting events

Additional risk of COVID-19 to the mass gathering sporting event	Yes (1)/No (0)	Score
Will the event be held in a country that has documented active local transmission of COVID-19 (community)	1	1
Will the event be held in a single venue or multiple venues/cities/countries?	0	0
Will the event include international participants (athletes and spectators) from countries that have documented active local transmission of COVID-19	1	1
Will the event include a significant number of participants (athletes or spectators) at higher risk of severe COVID-19 disease (e.g., people over 65)	0	0
Will the event include sports that are considered at higher risk of spread for COVID-19 (eg, contact sports)?	0	0
Will the event be held indoors?	0	0
<b>Total COVID-19 risk score</b>		<b>2</b>

## Mass gathering mitigation checklist for COVID-19: addendum for sporting events

Mitigation measures assess the current effort and planning to reduce the risk of spread of COVID-19 disease for the event. As mitigation measures can reduce the overall risk of the mass gathering contributing to the spread of COVID-19,

Topic	Key consideration	Score Yes/Completed (2), Maybe/In progress (1), No/Not considered (0)	Weighting	Total score	Comments
Understanding of the overview of the current COVID-19 situation by the event organizers	Have the relevant organizers and responsible staff been informed about the <b>latest available guidance on the COVID-19 outbreak</b> (official web resources available from WHO, CDC, ECDC, UN, local public health authorities)? And are the organizers and staff concerned committed to following the available guidance?	2	1	2	( <a href="https://www.who.int/publications-detail/key-planning-recommendations-for-mass-gatherings-in-the-context-of-the-current-covid-19-outbreak">https://www.who.int/publications-detail/key-planning-recommendations-for-mass-gatherings-in-the-context-of-the-current-covid-19-outbreak</a> )
	Are organizers aware of <b>global and local daily situation reports</b> as provided by WHO or local public health authorities?	2	1	2	
	Do the organizers and responsible staff understand the <b>risks and transmission routes of COVID-19, the steps that event attendees can take to limit spread, the recognized best practices</b> (including respiratory etiquette, hand hygiene, physical distancing, etc.), and the <b>travel restrictions</b> adopted by different countries that may affect the mass gathering?	2	1	2	attached COVID-19 Contingency and Mitigation Plan
Event emergency preparedness and	Has a <b>contingency medical response plan for COVID-19</b> been developed for this mass gathering sporting event?	2	3	6	attached COVID-19 Contingency and Mitigation Plan
	Does the contingency medical response plan include <b>information about how attendees should interact with the host country healthcare system</b> (e.g. hotline/helpline telephone number, medical teams and first-aid points for the mass gathering, local health care system)?	2	3	6	attached COVID-19 Contingency and Mitigation Plan
	Is there an <b>Emergency COVID-19 Outbreak Response Coordinator/Team</b> in the organizing committee or other structure structure for the mass gathering with defined roles and responsibilities, coordinating the health preparedness and response planning for the outbreak?	2	2	4	attached COVID-19 Contingency and Mitigation Plan
	Has the host country or organizer requested <b>support from WHO and/or local public health authorities</b> ?	2	3	6	
	<b>Have the organizers of the mass gathering event acquired the following supplies to help reduce the risk of transmission of COVID-19?</b>				
	Personal protective equipment (e.g. masks, gloves, gowns) for onsite medical personnel	2	3	6	attached COVID-19 Contingency and Mitigation Plan
	Hand sanitizer and alcohol rubs/gels, tissues, frequently replaced soap canisters and closed bins for safe disposal of hygienic materials (e.g. tissues, towels, sanitary products) in washrooms and changing rooms	2	3	6	attached COVID-19 Contingency and Mitigation Plan
	Hand sanitizers and alcohol rubs for all entrances and throughout the venue	2	3	6	attached COVID-19 Contingency and Mitigation Plan
	<b>If a person feels unwell/ shows symptoms of an acute respiratory infection during the event:</b>				
	Is there a procedure for athletes or spectators to clearly identify <b>whom to contact and how to do so</b> if they or other event participants feel unwell?	2	3	6	attached COVID-19 Contingency and Mitigation Plan
	Is there a protocol on <b>whom meeting organizers should contact in the host country</b> to report suspected cases and request testing and epidemiological investigations?	2	3	6	attached COVID-19 Contingency and Mitigation Plan
	Are <b>first-aid services or other medical services</b> in-place and equipped to support patients with respiratory symptoms?	2	2	4	Medical Services present at the venue during the event
	Are there <b>isolation rooms or mobile isolation units</b> available onsite?	2	2	4	attached COVID-19 Contingency and Mitigation Plan
	Are there any <b>designated medical facilities</b> that manage patients with COVID-19 infection in the host country?	2	2	4	Portuguese National Health Service

response plans	Are there <b>transporation services with trained medical professionals</b> available to transport critically ill patients with severe acute respiratory infections to a hospital or to evacuate them from the host country, if necessary?	2	2	4	Medical Services present at the venue during the event / National Health Service
	Has a <b>cleaning schedule</b> been developed to ensure the venue is clean and hygienic – wiping surfaces and any equipment regularly with disinfectant is strongly recommended (before, during and after the event and between each round of competition)?	2	3	6	attached COVID-19 Contingency and Mitigation Plan
	Are there established <b>screening measures</b> , including temperature checks in place for participants at the point of entry, venues, routes and on-site medical facilities (first-aid points)? (Please specify in Comments what these screening measures include)	2	3	6	attached COVID-19 Contingency and Mitigation Plan
	Is the host country conducting COVID-19 <b>laboratory diagnostic tests</b> ? (If Yes, please specify in comments the type of COVID-19 diagnostic test used)	2	3	6	Portugueses National Health Service and private laboratories - Tests which detect the presence of the virus SARS-CoV-2 and tests that detect the imunity or possible imunity response to the virus (ex. serological tests)
	Does the host country have a <b>national public health emergency preparedness and response plan</b> that can address severe respiratory diseases, including COVID-19?	2	2	4	Portuguese National Health Service
	Is there a <b>preliminary agreement by the host country to provide care</b> for any COVID-19 cases connected with the mass gathering?	2	3	6	Portuguese National Health Service
	If the event is for a duration of 14 days or longer, does the medical response plan for the event include resources and protocols for managing all public health interventions that would be necessary and supporting the national public health authorities if participants are infected and become unwell at the event? (If the event is for less than 14 days, please score 0)	2	3	6	attached COVID-19 Contingency and Mitigation Plan
	If the event is for less than 14 days, does the medical response plan include protocols for organizers to notify all participants of possible exposure to COVID-19 if the organizers are made aware of any suspected or confirmed cases that attended the event? (If the event is for 14 days or longer, please score 0)	0	3	0	
Stakeholder and partner coordination	Is there an established mechanism for collaboration and coordination between <b>the health and security sectors</b> , which is considered as crucial?	2	2	4	Portuguese National Health Service
	Are there agreed, clear and easily understood processes in place for <b>reporting to external multi-sectoral stakeholders</b> (including surveillance authorities, WHO, CDC, ECDC, etc.) and disseminating risk communication messages (Media)?	2	2	4	Portuguese National Health Service
Command and control	Is there a decision-making authority/body and an agreed procedure to <b>modify, restrict, postpone or cancel the mass gathering sporting</b> event related to the evolving COVID-19 outbreak?	2	3	6	Portuguese National Health Service
	Are there arrangements to activate a <b>strategic health operations centre</b> if there are suspected COVID-19 cases in connection with the sporting mass gathering?	2	2	4	Portuguese National Health Service
	Have the mass gathering organizers and staff <b>undergone training and exercises</b> on personal safety procedures and emergency mitigation measures (including those specifically listed in this checklist)?	2	3	6	attached COVID-19 Contingency and Mitigation Plan
	Is there a <b>risk communication strategy</b> for the sporting mass gathering in regard to COVID-19?	2	3	6	
	Is there a <b>designated person(s) to lead media</b> activities and tasked with managing all external communications with national and international government officials, the general public, and the media? (If yes, please identify the spokesperson in comments)	2	2	4	Name: Carlos Carmo (Town Council Loule)

Risk communication	Has there been <b>monitoring of national and international media and social media</b> established for <b>rumours</b> to be able to counter them early? (Please explain in the comments what protocols are in place for counter messaging)	1	2	2	
	Has coordination been set up with major <b>official media channels and social media</b> sites such as Twitter, Facebook and Instagram so that messaging can be coordinated with, and assisted by, the platforms to provide targeted messaging from organizers (including messaging to counter fake news and rumours, and proactive messaging about the status of the mass gathering, including changes)?	2	2	4	
Public health awareness of COVID-19 before and during the event	Has <b>public health advice</b> on clinical features of COVID-19, preventive measures, especially respiratory etiquette, hand hygiene practices, and physical distancing, been shared with all staff involved in the event, athletes, the public, and personnel of all relevant stakeholders?	2	3	6	attached COVID-19 Contingency and Mitigation Plan
	Has information on the <b>at-risk populations</b> been provided to all athletes, the public and others so they may make an informed decision on their attendance based on their personal risks?	2	3	6	attached COVID-19 Contingency and Mitigation Plan
	Has public advice included information on the meaning of the following <b>measures: quarantine, self-isolation and self-monitoring?</b>	2	2	4	attached COVID-19 Contingency and Mitigation Plan
Surge capacity	<b>Are there any surge arrangements in place in the event of a public health emergency during the mass gathering - (i.e.</b>				
	Do these surge arrangements include funding for mitigation measures?	2	3	6	
	Do these surge arrangements include stockpiles of equipment (e.g. personal protective equipment, etc.)	2	3	6	
	Do these surge arrangements include training of extra staff?	2	2	4	
	Do these surge arrangements include volunteers?	2	2	4	
Specific mitigation measures	Will there be <b>daily health checks</b> of athletes/competitors?	2	2	4	attached COVID-19 Contingency and Mitigation Plan
	Will the <b>athletes be separated from other groups</b> , such as officials, support staff and spectators, to limit transmission?	2	2	4	attached COVID-19 Contingency and Mitigation Plan
	Are there measures in place to <b>limit the sharing of equipment, water bottles, towels, etc.?</b>	2	3	6	attached COVID-19 Contingency and Mitigation Plan
	Will athletes be given closed <b>containers to allow for the safe disposal or storing of all hygienic materials</b> (e.g. tissues, towels, etc.)?	2	3	6	attached COVID-19 Contingency and Mitigation Plan
	Will the sporting event have <b>designated seating</b> for all spectators?	2	3	6	No public: attached COVID-19 Contingency and Mitigation Plan
	Does the designated <b>seating provided allow for physical distancing</b> between spectators (minimum of 1 metre)?	2	2	4	No public: attached COVID-19 Contingency and Mitigation Plan
	Have <b>pre-travel health checks</b> been performed on all athletes to ensure underlying co-morbidities, medications, allergies, etc. are documented?	2	2	4	

Sum of mitigation measures	218
<b>Total mitigation score (%)</b>	<b>99</b>

218

## Mass gathering overall risk score: addendum for sporting events

The decision matrix takes the risk score and the mitigation score to provide a colour determination. This colour determination identifies the total risk of transmission and further spread of COVID-19 in relation to the mass gathering. The "Colour Determination" key below the decision matrix describes the total risk for each colour.

<b>Total COVID-19 Risk Score (from "Risk Assessment" Tab)</b>	<b>2</b>
---	----------

<b>Total mitigation score (from "Mitigation Checklist" Tab)</b>	<b>99</b>
---	-----------

### Risk Vs. Mitigation Matrix

<b>Total Risk Assessment Score</b>	Very Prepared to Mitigate COVID-19 Impacts (76-100)	Somewhat Prepared to Mitigate COVID-19 Impacts (51-75)	Somewhat Unprepared to Mitigate COVID-19 Impacts (26-50)	Very Unprepared to Mitigate COVID-19 Impacts (0-25)
0 - Negligible	Very low	Very low	Very low	Very low
1 - Very Low Risk	Very low	Very low	Low	Low
2 - Low Risk	Low	Low	Low	Moderate
3 - Moderate Risk (low-moderate)	Low	Moderate	Moderate	Moderate
4 - Moderate Risk (high-moderate)	Moderate	Moderate	High	Very High
5 - High Risk	High	High	Very High	Very High
6 - Very High Risk	Very High	Very High	Very High	Very High

<b>KEY FOR COLOUR DETERMINATION OF OVERALL RISK</b>	
<b>VERY LOW</b>	Overall risk of transmission and further spread of COVID-19 in relation to the mass gathering is considered <u>very low</u> .
<b>LOW</b>	Overall risk of transmission and further spread of COVID-19 in relation to the mass gathering is considered <u>low</u> . Recommend checking whether mitigation measures can be strengthened.

MODERATE	Overall risk of transmission and further spread of COVID-19 in relation to the mass gathering is considered <u>moderate</u> . Recommend <u>significant</u> efforts to improve mitigation measures or reduce risk of transmission (decrease risk assessment score).
HIGH	Overall risk of transmission and further spread of COVID-19 in relation to the mass gathering is considered <u>high</u> . Recommend <u>significant</u> efforts to improve <u>both</u> mitigation measures and reduce risk of transmission (decrease risk assessment score).
VERY HIGH	Overall risk of transmission and further spread of COVID-19 in relation to the mass gathering is considered <u>very high</u> .



## **VILAMOURA ATLANTIC TOUR 2021**

**25 January – 07 March 2021**

### **COVID-19 CONTINGENCY AND MITIGATION PLAN**

#### **SECURITY PROCEDURES**

##### **PARTICIPANTS, ATHLETES, STAFF PERSONNEL, OFFICIALS, EMPLOYEES AND AUTHORIZED PERSONNEL**

All participants, such as athletes, staff personnel, officials, employees and any other authorized personnel undertake to comply with the standards of good hygienic and sanitary conduct implemented by the National Health Services (DGS) and the code of conduct of this Manual of Protecting Procedures.

Athletes participating in the CSIs and CSNs Vilamoura, their coaches and individuals directly connected to the athlete, who do not show signs or symptoms of COVID-19 such as: fever, cough, breathing difficulties, loss of smell and taste, nasal discharge, sore throat, headache, muscle pain, joint pain, tiredness, diarrhea, are allowed to use the facilities of the Vilamoura Equestrian Centre on the 25<sup>th</sup> January till the 07<sup>th</sup> March 2021

##### **Access Control:**

An access control with standard Covid-19 screening questions and temperature check will be performed at the entrance of the venue where the competitions take place (one entrance door with 2 different ways - in and out)

##### **Access and Circulation on the facilities (venue perimeter)**

The access to the Vilamoura Equestrian Centre must be done in a proper vehicle, respecting the DGS indications

The circulation inside the facilities must be done complying the instructions of the Organizing Committee

It is mandatory the use of masks in closed areas/facilities and optional in open areas/facilities

There will be alcohol-based hand rub at the entrance of the different facilities (show office, judge box, training arena, Wc)

**A minimum physical distance of 2 meters between individuals on foot and 3 meters when mounted must be complied.**





### **Show Office**

The OC advises all participants to install the App "Online Equipe", where they have access to all information (such as schedules, timetables, competitions, starting orders and results) in order to reduce the need of participants and staff to enter the show office

One person at a time inside the show office is allowed. The remain shall wait in a queue outside the show office keeping a minimal distance of 2 meters from each other

The use mask inside the show office is mandatory

Payments should be done preferably by credit card or bank transfer (disinfection is done after the use of the terminal)

### **Stable Area**

Stables are installed in open areas

Minimum physical distance of 2 meters between individuals must be complied

Use of gloves when handling common equipment

Frequent collection of garbage points

### **Training and Main Arenas**

Maximum number of horses in the Training Arena on flat work: 15 horses

Maximum number of horses in the Training Arena when jumping: 12 horses

Maximum number of horses in the main arena: 3 horses

It is advisable the wear of gloves when handling obstacles in the training arena

The rider's individual equipment (headgear, gloves, stick) should not be shared

### **Judge Box**

Only officials, speakers, timing and informatic services shall be allowed access

Individuals shall be seated side by side and as far as possible from each other

It is mandatory the use of masks in closed judge boxes and optional in opened judge boxes

Closed judge boxes shall be well ventilated

Disinfection of working tools (such as bell, start/stop button, microphones, etc) whenever there is a change of function between officials



### **WC and Showers**

Daily and frequent disinfection of spaces

Provision of paper hand towels

2 users maximum

### **Restaurants and Bars**

The Government and National Health Service (DGS) guidelines will be applied

### **Bleachers and Public**

Not open to the public. The competitions will take place behind closed doors.

**Final Note:** During their stay outside the Vilamoura Equestrian Centre athletes and people connected to them must comply with all rules and recommendations of the DGS regarding social distance, brathing etiquette, etc.

### **Contingency Plan during the Competition:**

1) In case of detection of a suspicious case:

On-duty medical assistance or the person responsible (Carolina Fontaneda Tel +34 630 892 269) must:

Put on a mask and gloves, before approaching the suspicious case

Hand mask and gloves to the person with signs of illness

Lead the individual to the isolation room, according to what is outlined on the plan, avoiding contact with other people and keeping the recommended distances.

Identification and registration of all facilities frequented by the person in question and the contacts established by him/her in those places with other individuals

2) The person with signs of illness:

Follow the guidelines given

Contact the National Health Line SNS24 (+351 808 24 24 24) and follow the instructions given by the national department

Signages to be posted at the facilities:

## Wash your hands

Wash your hands with  
soap and running water  
when **hands are visibly  
dirty**



If your **hands are not  
visibly dirty**,  
frequently clean them  
by using alcohol-based  
hand rub or soap and  
water



World Health  
Organization

Protect yourself and others from getting sick

## Wash your hands



- after coughing or sneezing
- when caring for the sick
- before, during and after you prepare food
- before eating
- after toilet use
- when hands are visibly dirty
- after handling animals or animal waste



World Health  
Organization

## Protect others from getting sick

When coughing and sneezing  
**cover mouth and nose** with  
flexed elbow or tissue



**Throw tissue into closed bin  
immediately after use**

**Clean hands** with alcohol-based  
hand rub or soap and water  
after coughing or sneezing and  
when caring for the sick



World Health  
Organization

## Protect others from getting sick



**Avoid close contact** when you are experiencing cough and fever

**Avoid spitting in public**



If you have fever, cough and difficulty breathing **seek medical care early** and share previous travel history with your health care provider



World Health  
Organization

Yes. Respiratory viruses can be passed by shaking hands and touching your eyes, nose and mouth.

Greet people with a wave, a nod or a bow instead.

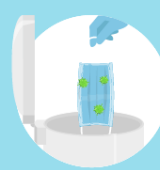
Should I avoid shaking hands because of the new coronavirus?



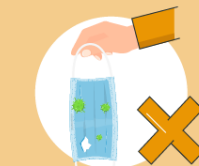
# HOW TO WEAR A MEDICAL MASK SAFELY

[who.int/epi-win](https://who.int/epi-win)

## Do's →



## Don'ts →



**Remember that masks alone cannot protect you from COVID-19. Maintain at least 1 metre distance from others and wash your hands frequently and thoroughly, even while wearing a mask.**



## I. DENOMINATION OF THE EVENT

Venue: VILAMOURA ATLANTIC TOUR 2021 NF: POR

Date: CSI3\*/CSI1\*/CSIYH1\* 25<sup>th</sup> - 31<sup>st</sup> JANUARY  
CSI3\*/CSI1\*/CSIYH1\* 01<sup>st</sup> - 07<sup>th</sup> FEBRUARY  
CSI3\*/CSI1\*/CSIYH1\* 08<sup>th</sup> - 14<sup>th</sup> FEBRUARY  
CSI3\*/CSI1\*/CSIYH1\* 15<sup>th</sup> - 21<sup>st</sup> FEBRUARY  
CSI3\*/CSI1\*/CSIYH2\* 22<sup>nd</sup> - 28<sup>rd</sup> FEBRUARY  
CSI4\*/CSI1\*/CSIYH1\* 01<sup>st</sup> - 07<sup>th</sup> MARCH

Indoor: ☐ Outdoor: ☒

### EVENT CATEGORIES:

CSIO5*	<input type="checkbox"/>	CSI5*-W	<input type="checkbox"/>	CSI5*	<input type="checkbox"/>	CSIU25-A	<input type="checkbox"/>	CSIU25-B	<input type="checkbox"/>
CSIO4*	<input type="checkbox"/>	CSI4*-W	<input type="checkbox"/>	CSI4*	<input checked="" type="checkbox"/>	CSIY-A	<input type="checkbox"/>	CSIY-B	<input type="checkbox"/>
CSIO3*	<input type="checkbox"/>	CSI3*-W	<input type="checkbox"/>	CSI3*	<input checked="" type="checkbox"/>	CSIJ-A	<input type="checkbox"/>	CSIJ-B	<input type="checkbox"/>
CSIO2*	<input type="checkbox"/>	CSI2*-W	<input type="checkbox"/>	CSI2*	<input type="checkbox"/>	CSIch-A	<input type="checkbox"/>	CSIch-B	<input type="checkbox"/>
CSIO1*	<input type="checkbox"/>	CSI1*-W	<input type="checkbox"/>	CSI1*	<input checked="" type="checkbox"/>	CSIV-A	<input type="checkbox"/>	CSIV-B	<input type="checkbox"/>
CSIOY	<input type="checkbox"/>			CSIL1*	<input type="checkbox"/>	CSIAm-A	<input type="checkbox"/>	CSIAm-B	<input type="checkbox"/>
CSIOJ	<input type="checkbox"/>			CSIYH2*	<input checked="" type="checkbox"/>	CSIP	<input type="checkbox"/>		
CSIOB	<input type="checkbox"/>			CSIYH1*	<input checked="" type="checkbox"/>				
CSIOCh	<input type="checkbox"/>								

Championship ☐ Games ☐

## II. GENERAL CONDITIONS

- FEI Statutes, 24<sup>th</sup> edition, effective 19 November 2019
- FEI General Regulations, 24<sup>th</sup> edition, 1<sup>st</sup> January 2020, updates effective 1<sup>st</sup> January 2021
- FEI Veterinary Regulations, 14<sup>th</sup> edition, 1 January 2018, updates effective 1<sup>st</sup> January 2021
- The Jumping Rules and its Annexes, 26<sup>th</sup> edition 1 January 2018, updates effective 1 January 2021
- <https://inside.fei.org/fei/regulations/jumping>
- CSI/CSIO Prize Money requirements 2021  
<https://inside.fei.org/sites/default/files/Final%20CSIs-CSIOs%20-%202021.pdf>
- Longines Rankings – Groups Categories 2021  
<https://inside.fei.org/sites/default/files/Final%20Longines%20Ranking%20Groups%20-%202021.pdf>
- Equine Anti-Doping and Controlled Medication Regulations (EADCMR), 3<sup>rd</sup> Edition, effective 1<sup>st</sup> January 2021
- FEI Anti-Doping Rules for Human Athletes (ADRHA), based upon the 2021 WADA Code, effective 1<sup>st</sup> January 2021
- The FEI Policy for Enhanced Competition Safety during the Covid-19 Pandemic, effective as of 1 July 2020 (updated 12 October 2020) and until further notice
- All subsequent published revisions/updates, the provisions of which will take precedence.

\*\*\*\*\*

**THE ANNEXE(S) IS/ARE PART OF THIS APPROVED AND SIGNED SCHEDULE AND MUST BE DISTRIBUTED TO ALL OFFICIALS AND NFs AND IS AVAILABLE TO OTHERS UPON REQUEST**

Approved by the FEI, Lausanne, on 08/01/2021. Updated on 12/01/2021, 10/02/2021, 19/02/2021, 22/02/2021.



Deborah Riplinger  
Interim Jumping Director

**NB: No modifications to the approved Schedule will be accepted less than two weeks prior to the event. Additionally, no change may be made to a Longines Ranking competition once the schedule has been approved. Prizes in kind, to be accepted as prize money to count for Longines Ranking competitions and total event prize money, must be easily convertible into cash (GRs Art. 127).**

## **TABLE OF CONTENTS**

<b>I.</b>	<b>DENOMINATION OF THE EVENT .....</b>	<b>1</b>
<b>II.</b>	<b>GENERAL CONDITIONS .....</b>	<b>1</b>
<b>III.</b>	<b>THE FEI CODE OF CONDUCT FOR THE WELFARE OF THE HORSE .....</b>	<b>3</b>
<b>IV.</b>	<b>GENERAL INFORMATION .....</b>	<b>4</b>
1.	ORGANISER .....	4
2.	ORGANISING COMMITTEE .....	4
3.	EVENT DIRECTOR .....	4
4.	STABLE MANAGER.....	4
5.	ANNOUNCER .....	4
<b>V.</b>	<b>OFFICIALS .....</b>	<b>5</b>
<b>VI.</b>	<b>INVITATIONS .....</b>	<b>11</b>
1.	GENERAL.....	11
<b>VII.</b>	<b>ENTRIES .....</b>	<b>14</b>
1.	ENTRY DATES AND ENTRY FEES.....	14
2.	OTHER FEES .....	15
3.	NO-SHOWS/LATE WITHDRAWALS.....	16
<b>VIII.</b>	<b>TIMETABLE.....</b>	<b>17</b>
<b>IX.</b>	<b>COMPETITION DETAIL.....</b>	<b>24</b>
<b>X.</b>	<b>FACILITIES OFFERED.....</b>	<b>84</b>
1.	ATHLETES.....	84
2.	GROOMS.....	84
<b>XI.</b>	<b>LOGISTICAL/ADMINISTRATIVE/TECHNICAL INFORMATION .....</b>	<b>85</b>
1.	DRAW .....	85
2.	COMPETITION ARENA(S) .....	85
3.	PRACTICE ARENA(S) .....	85
4.	STABLES .....	85
5.	SAFETY CUPS.....	85
6.	TIMING DEVICE .....	85
7.	SCORING/TIMING PROVIDER.....	85
8.	OTHER TECHNOLOGY/SERVICE PROVIDER(S) .....	86
9.	PRIZE GIVING CEREMONY .....	86
10.	ADVERTISING ON ATHLETES AND HORSES.....	86
11.	TICKETING.....	86
12.	BETTING.....	86
13.	TRANSPORT REIMBURSEMENT HORSES / PONIES .....	86
14.	WELCOME.....	86
15.	LOCAL TRANSPORTATION - ARRANGEMENTS FROM HOTEL TO SHOWGROUNDS .....	86
16.	ENTRY RIGHT TO SHOWGROUNDS/ACCREDITED PERSONS.....	87
17.	SUSTAINABILITY.....	87
<b>XII.</b>	<b>VETERINARY MATTERS.....</b>	<b>88</b>
1.	CUSTOMS FORMALITIES .....	88

2.	HEALTH REQUIREMENTS .....	88
3.	NATIONAL REQUIREMENTS .....	88
4.	PONIES.....	88
5.	INJURY SURVEILLANCE.....	88
6.	TRANSPORT OF HORSES.....	88
7.	VENUE ARRIVAL INFORMATION & FITNESS TO COMPETE .....	89
8.	EQUINE ANTI-DOPING AND CONTROLLED MEDICATION PROGRAMME (EADCMP). FEI VETERINARY REGULATIONS, CHAPTER VII .....	90
<b>XIII.</b>	<b>HUMAN ANTI-DOPING .....</b>	<b>91</b>
<b>XIV.</b>	<b>ADDITIONAL INFORMATION .....</b>	<b>91</b>
1.	THE FEI POLICY FOR ENHANCED COMPETITION SAFETY DURING THE COVID-19 PANDEMIC.....	91
2.	INSURANCES AND NATIONAL REQUIREMENTS.....	92
3.	PROTESTS/APPEALS.....	93
4.	SCHOOLING DURING COMPETITIONS.....	93
5.	STEWARDING.....	93
6.	DISPUTES .....	94
7.	MODIFICATION TO SCHEDULE .....	94
8.	ADDITIONAL INFORMATION FROM THE OC.....	94
9.	PRIZE MONEY DISTRIBUTION.....	96
10.	MAXIMUM NUMBER OF STARTERS PER COMPETITION .....	97
11.	GLOSSARY .....	98
<b>XV.</b>	<b>ANNEXES.....</b>	<b>100</b>

### **III. THE FEI CODE OF CONDUCT FOR THE WELFARE OF THE HORSE**

The Fédération Equestre Internationale (FEI) expects all those involved in international equestrian sport to adhere to the FEI's Code of Conduct and to acknowledge and accept that at all times the welfare of the horse must be paramount and must never be subordinated to competitive or commercial influences.

1. At all stages during the preparation and training of competition horses, welfare must take precedence over all other demands. This includes good horse management, training methods, farriery and tack, and transportation.
2. Horses and Athletes must be fit, competent and in good health before they are allowed to compete. This encompasses medication use, surgical procedures that threaten welfare or safety, pregnancy in mares and the misuse of aids.
3. Events must not prejudice horse welfare. This involves paying careful attention to the competition areas, ground surfaces, weather conditions, stabling, site safety and fitness of the horse for onward travel after the event.
4. Every effort must be made to ensure that horses receive proper attention after they have competed and that they are treated humanely when their competition careers are over. This covers proper veterinary care, competition injuries, euthanasia and retirement.
5. The FEI urges all involved with the sport to attain the highest levels of education in their areas of expertise.

The Long version of this Code can be obtained from the Fédération Equestre Internationale, HM King Hussein I Building, Chemin de la Joliette 8, 1006 Lausanne, Switzerland. Telephone: +41 21 310 47 47. The Code is available in English. The Code is also available on the FEI's website: <http://inside.fei.org/>.

## **IV. GENERAL INFORMATION**

### **1. ORGANISER**

Name: CLUBE HIPICO DE VILAMOURA  
Address: Estrada de Albufeira, 8125-300 Quarteira  
Telephone: ++351.912 823 389  
Email: vilamouraequestriancentre@gmail.com  
Website: www.vilamouraequestriancentre.com

#### Contact Details Show Ground:

Address: Estrada de Albufeira, 8125-300 Quarteira  
Telephone: ++34.630 892 269/++351.960 308 299  
GPS Coordinates: 37.10270138425996, -8.151050532238287  
Accessibility details (directions by road, nearest airport / train station): Faro airport

### **2. ORGANISING COMMITTEE**

President of the Event: Moura, Antonio  
Show Secretary: Matos, Maria  
Press Officer: Gomes, Leticia

### **3. EVENT DIRECTOR**

Name: Fontaneda, Carolina  
Address: Estrada de Albufeira, 8125-300 Quarteira  
Mobile: ++34.630 892 269  
Email: vilamouraequestriancentre@gmail.com

### **4. STABLE MANAGER**

Name: Dias, Ricardo  
Telephone: ++351.919136796  
Email: vilamouraequestriancentre@gmail.com

### **5. ANNOUNCER**

Name: Moura, Bernardo  
Email: vilamouraequestriancentre@gmail.com

## V. OFFICIALS

National Judges may only officiate in CSI 1\*/CSIYH1\*

### 1<sup>st</sup> WEEK: 25<sup>th</sup> – 31 JANUARY - CSI 3\*/CSI 1\*/CSIYH1\*

Ref.	Panel	Function	FEI ID	Name	NF	Level	E-mail & Mobile
1	Ground Jury	Ground Jury President	10048878	Gonde, Didier	FRA	3	dgonde@wanadoo.fr
		Ground Jury Member	10050782	Affouard, Jacques	FRA	3	
		Ground Jury Member	10049554	Alvarez Nachon, Jose Antonio	ESP	3	
		Ground Jury Member	10048880	Gonzalez Alvarez, Daniel Balbino	ESP	3	
		Ground Jury Member	10075849	Reinas, Joao Gilbert	POR	3	
		Ground Jury Member		Mendes, Rui	POR	NAT	
		Ground Jury Member		Travia, Linda	POR	NAT	
		Ground Jury Member		Vilela, Ricardo	POR	NAT	
2	Foreign Judge	Foreign Judge	10052385	Patrick Jaubert	FRA	3	patjau@orange.fr
4	Course Designer	Course Designer	10051570	Travagliati, Elio	ITA	4	Elio.travagliati@ibero.it
		Assistant Course Designer	10051736	Balen, Leandro	BRA	3	
		Assistant Course Designer	10112558	Santi, Fulvio	ITA	1	
5	Chief Steward	Chief Steward	10051037	Lopes Mateus, Antonio	POR	3	a.lopesmateus@iol.pt
6	Foreign Steward	Foreign Steward	10049693	Vidal Martinez, Gabriel	URU	2	gabrielvidal55@gmail.com
7	Assistants Stewards	Assistant Steward	10050871	Machado, Luis Pedro	POR	2	
		Assistant Steward	10106030	Montefalco, Nuno	POR	2	
		Assistant Steward	10181186	Vieira, Diana	POR	1	
		Assistant Steward	10181182	Esteves, Ricardo	POR	1	
		Assistant Steward	10106033	Paixao, Pedro	POR	1	
		Assistant Steward	10063553	Caixinha, Armindo	POR	1	
8	FEI Veterinary Delegate	FEI Veterinary Delegate	10082821	Rosado Cameron, Jesus	ESP	1	
		FEI Veterinary Delegate	10051105	Barbosa, Mario	POR		++351.961733333
9	Veterinary Service Manager (VR Art 1103) / Treating Veterinarian (VR Art 1105)	Veterinary Service Manager	10160234	Cunha Rego, Rodrigo	POR		++351.966225328
		FEI Permitted Treating Veterinarian	10192583	Jordão Santos, Miguel Andre	POR		++351.966225328
10	Medical Doctor	Medical Doctor		Local Red Cross Service/Hospital de Loule			geral@hospitaldeloule.com*
11	Farrier	Farrier		Paz, Marcio	POR		++351.28924950
							++351.914206195

**FEI APPROVED SCHEDULE**  
**Vilamoura 25 January – 07 March 2021**



**2<sup>nd</sup> WEEK: 01<sup>st</sup> – 07<sup>th</sup> FEBRUARY - CSI3\* /CSI1\* /CSIYH1\***

Ref.	Panel	Function	FEI ID	Name	NF	Level	E-mail & Mobile
1	Ground Jury	Ground Jury President	10048878	Gonde, Didier	FRA	3	*dgonde@wanadoo.fr
		Ground Jury Member	10050782	Affouard, Jacques	FRA	3	
		Ground Jury Member	10049554	Alvarez Nachon, Jose Antonio	ESP	3	
		Ground Jury Member	10048880	Gonzalez Alvarez, Daniel Balbino	ESP	3	
		Ground Jury Member	10075849	Reinas, Joao Gilbert	POR	3	
		Ground Jury Member		Mendes, Rui	POR	NAT	
		Ground Jury Member		Travia, Linda	POR	NAT	
		Ground Jury Member		Vilela, Ricardo	POR	NAT	
2	Foreign Judge	Foreign Judge	10051761	Evelyne Gaymard	FRA	3	Evelyne.gaymard@laposte.net
4	Course Designer	Course Designer	10052096	Konickx, Louis	NED	4	
		Assistant Course Designer	10051736	Balen, Leandro	BRA	3	
5	Chief Steward	Chief Steward	10051037	Lopes Mateus, Antonio	POR	3	* a.lopesmateus@iol.pt
6	Foreign Steward	Foreign Steward	10049693	Vidal Martinez, Gabriel	URU	2	*gabrielvidal55@gmail.com
7	Assistants Stewards	Assistant Steward	10050871	Machado, Luis Pedro	POR	2	
		Assistant Steward	10106030	Montefalco, Nuno	POR	2	
		Assistant Steward	10181186	Vieira, Diana	POR	1	
		Assistant Steward	10181182	Esteves, Ricardo	POR	1	
		Assistant Steward	10106033	Paixao, Pedro	POR	1	
		Assistant Steward	10063553	Caixinha, Armindo	POR	1	
		Assistant Steward	10082821	Rosado Cameron, Jesus	ESP	1	
8	FEI Veterinary Delegate	FEI Veterinary Delegate	10051437	Nabais, Maria Antonia	POR		+ +351.91414966
9	Veterinary Service Manager (VR Art 1103) / Treating Veterinarian (VR Art 1105)	Veterinary Service Manager	10160234	Cunha Rego, Rodrigo	POR		+ +351.966225328
		FEI Permitted Treating Veterinarian	10192583	Jordão Santos, Miguel Andre	POR		+ +351.966225328
10	Medical Doctor	Medical Doctor		Local Red Cross Service/Hospital de Loule			geral@hospitaldeloule.com* + +351.28924950
11	Farrier	Farrier		Paz, Marcio	POR		+ +351.914206195

**FEI APPROVED SCHEDULE**  
**Vilamoura 25 January – 07 March 2021**



**3<sup>rd</sup> WEEK: 08<sup>th</sup> – 14<sup>th</sup> FEBRUARY - CSI 3\* /CSI 1\* /CSIYH1\***

Ref.	Panel	Function	FEI ID	Name	NF	Level	E-mail & Mobile
1	Ground Jury	Ground Jury President	10048878	Gonde, Didier	FRA	3	*dgonde@wanadoo.fr
		Ground Jury Member	10050782	Affouard, Jacques	FRA	3	
		Ground Jury Member	10049554	Alvarez Nachon, Jose Antonio	ESP	3	
		Ground Jury Member	10075849	Reinas, Joao Gilbert	POR	3	
		Ground Jury Member		Mendes, Rui	POR	NAT	
		Ground Jury Member		Travia, Linda	POR	NAT	
		Ground Jury Member		Vilela, Ricardo	POR	NAT	
2	Foreign Judge	Foreign Judge	10048880	Gonzalez Alvarez, Daniel Balbino	ESP	3	
4	Course Designer	Course Designer	10024054	Costa Cabral, Bernardo	POR	4	
		Assistant Course Designer	10051736	Balen, Leandro	BRA	3	
		Assistant Course Designer	10191638	Santos, Jose	POR	1	
5	Chief Steward	Chief Steward	10051037	Lopes Mateus, Antonio	POR	3	* a.lopesmateus@iol.pt
6	Foreign Steward	Foreign Steward	10049693	Vidal Martinez, Gabriel	URU	2	*gabrielvidal55@gmail.com
7	Assistants Stewards	Assistant Steward	10050871	Machado, Luis Pedro	POR	2	
		Assistant Steward	10106030	Montefalco, Nuno	POR	2	
		Assistant Steward	10181186	Vieira, Diana	POR	1	
		Assistant Steward	10181182	Esteves, Ricardo	POR	1	
		Assistant Steward	10106033	Paixao, Pedro	POR	1	
		Assistant Steward	10063553	Caixinha, Armino	POR	1	
		Assistant Steward	10049857	Ortega Polo, Eduardo	ESP	2	
8	FEI Veterinary Delegate	FEI Veterinary Delegate	10053600	Da Costa Pereira, Joao Pedro	POR		+ +351.966043792
9	Veterinary Service Manager (VR Art 1103) / Treating Veterinarian (VR Art 1105)	Veterinary Service Manager	10160234	Cunha Rego, Rodrigo	POR		+ +351.966225328
		FEI Permitted Treating Veterinarian	10192583	Jordão Santos, Miguel Andre	POR		+ +351.966225328
10	Medical Doctor	Medical Doctor		Local Red Cross Service/Hospital de Loule			geral@hospitaldeloule.com* + +351.28924950
11	Farrier	Farrier		Paz, Marcio	POR		+ +351.914206195

**FEI APPROVED SCHEDULE**  
**Vilamoura 25 January – 07 March 2021**



**4<sup>th</sup> WEEK: 15<sup>th</sup> – 21<sup>th</sup> FEBRUARY - CSI3\* /CSI1\* /CSIYH1\***

Ref.	Panel	Function	FEI ID	Name	NF	Level	E-mail & Mobile
1	Ground Jury	Ground Jury President	10048878	Gonde, Didier	FRA	3	*dgonde@wanadoo.fr
		Ground Jury Member	10050780	Lemmonier, François	FRA	3	
		Ground Jury Member	10049554	Alvarez Nachon, Jose Antonio	ESP	3	
		Ground Jury Member	10048880	Gonzalez Alvarez, Daniel Balbino	ESP	3	
		Ground Jury Member	10098672	Lynch, Steve	GBR	3	
		Ground Jury Member	10075849	Reinas, Joao Gilbert	POR	3	
		Ground Jury Member		Mendes, Rui	POR	NAT	
		Ground Jury Member		Travia, Linda	POR	NAT	
		Ground Jury Member		Vilela, Ricardo	POR	NAT	
2	Foreign Judge	Foreign Judge	10050109	Salek, Radovan	CZE	3	
4	Course Designer	Course Designer	10060881	Colombo, Andreas	ITA	3	Coloand19@gmail.com +393394826461
		Assistant Course Designer	10051736	Balen, Leandro	BRA	3	
5	Chief Steward	Chief Steward	10051037	Lopes Mateus, Antonio	POR	3	* a.lopesmateus@iol.pt
6	Foreign Steward	Foreign Steward	10049693	Vidal Martinez, Gabriel	URU	2	*gabrielvidal55@gmail.com
7	Assistants Stewards	Assistant Steward	10050871	Machado, Luis Pedro	POR	2	
		Assistant Steward	10106030	Montefalco, Nuno	POR	2	
		Assistant Steward	10181186	Vieira, Diana	POR	1	
		Assistant Steward	10181182	Esteves, Ricardo	POR	1	
		Assistant Steward	10106033	Paixao, Pedro	POR	1	
		Assistant Steward	10063553	Caixinha, Armindo	POR	1	
		Assistant Steward	10082821	Rosado Cameron, Jesus	ESP	1	
8	FEI Veterinary Delegate	FEI Veterinary Delegate	10051105	Barbosa, Mario	POR		+ +351.961733333
9	Veterinary Service Manager (VR Art 1103) / Treating Veterinarian (VR Art 1105)	Veterinary Service Manager	10160234	Cunha Rego, Rodrigo	POR		+ +351.966225328
		FEI Permitted Treating Veterinarian	10192583	Jordão Santos, Miguel Andre	POR		+ +351.966225328
10	Medical Doctor	Medical Doctor		Local Red Cross Service/Hospital de Loule			geral@hospitaldeloule.com* + +351.28924950
11	Farrier	Farrier		Paz, Marcio	POR		+ +351.914206195



**FEI APPROVED SCHEDULE**  
**Vilamoura 25 January – 07 March 2021**



**5<sup>th</sup> WEEK: 22<sup>nd</sup> – 28<sup>th</sup> FEBRUARY - CSI3\* /CSI1\* /CSIYH2\***

Ref.	Panel	Function	FEI ID	Name	NF	Level	E-mail & Mobile
1	Ground Jury	Ground Jury President	10048878	Gonde, Didier	FRA	3	*dgonde@wanadoo.fr
		Ground Jury Member	10050780	Lemmonier, François	FRA	3	
		Ground Jury Member	10049554	Alvarez Nachon, Jose Antonio	ESP	3	
		Ground Jury Member	10048880	Gonzalez Alvarez, Daniel Balbino	ESP	3	
		Ground Jury Member	10098672	Lynch, Steve	GBR	3	
		Ground Jury Member	10075849	Reinas, Joao Gilbert	POR	3	
		Ground Jury Member		Mendes, Rui	POR	NAT	
		Ground Jury Member		Travia, Linda	POR	NAT	
		Ground Jury Member		Vilela, Ricardo	POR	NAT	borremans_patricia@hotmail.com
2	Foreign Judge	Foreign Judge	10049462	Maria de Uriarte	ESP	3	
4	Course Designer	Course Designer	10051570	Travagliati, Elio	ITA	4	
		Assistant Course Designer	10112558	Santi, Fulvio	ITA	1	
		Assistant Course Designer	10051736	Balen, Leandro	BRA	3	
5	Chief Steward	Chief Steward	10051037	Lopes Mateus, Antonio	POR	3	* a.lopesmateus@iol.pt
6	Foreign Steward	Foreign Steward	10049693	Vidal Martinez, Gabriel	URU	2	*gabrielvidal55@gmail.com
7	Assistants Stewards	Assistant Steward	10050871	Machado, Luis Pedro	POR	2	
		Assistant Steward	10106030	Montefalco, Nuno	POR	2	
		Assistant Steward	10181186	Vieira, Diana	POR	1	
		Assistant Steward	10181182	Esteves, Ricardo	POR	1	
		Assistant Steward	10106033	Paixao, Pedro	POR	1	
		Assistant Steward	10063553	Caixinha, Armindo	POR	1	
		Assistant Steward	10049857	Ortega Polo, Eduardo	ESP	2	
8	FEI Veterinary Delegate	FEI Veterinary Delegate	10543600	Da Costa Pereira, Joao Pedro	POR	10043600	+ +351.966043792
9	Veterinary Service Manager (VR Art 1103) / Treating Veterinarian (VR Art 1105)	Veterinary Service Manager	10160234	Cunha Rego, Rodrigo	POR		+ +351.966225328
		FEI Permitted Treating Veterinarian	10192583	Jordão Santos, Miguel Andre	POR		+ +351.966225328
10	Medical Doctor	Medical Doctor		Local Red Cross Service/Hospital de Loule			geral@hospitaldeloule.com* + +351.28924950
11	Farrier	Farrier		Paz, Marcio	POR		+ +351.914206195

**FEI APPROVED SCHEDULE**  
**Vilamoura 25 January – 07 March 2021**



**6<sup>th</sup> WEEK: 01<sup>st</sup> – 07<sup>th</sup> MARCH – CSI4\*/CSI1\*/CSIYH1\***

Ref.	Panel	Function	FEI ID	Name	NF	Level	E-mail & Mobile
1	Ground Jury	Ground Jury President	10048878	Gonde, Didier	FRA	3	*dgonde@wanadoo.fr
		Ground Jury Member	10050780	Lemmonier, François	FRA	3	
		Ground Jury Member	10049554	Alvarez Nachon, Jose Antonio	ESP	3	
		Ground Jury Member	10048880	Gonzalez Alvarez, Daniel Balbino	ESP	3	
		Ground Jury Member	10098672	Lynch, Steve	GBR	3	
		Ground Jury Member	10075849	Reinas, Joao Gilbert	POR	3	
		Ground Jury Member		Mendes, Rui	POR	NAT	
		Ground Jury Member		Travia, Linda	POR	NAT	
		Ground Jury Member		Vilela, Ricardo	POR	NAT	
2	Foreign Judge	Foreign Judge	10051759	Jacques Boyer	FRA	3	driboyer@aol.fr
4	Course Designer	Course Designer	10067890	Bodo, Gregory	FRA	4	
		Assistant Course Designer	10112558	Santi, Fulvio	ITA	1	
		Assistant Course Designer	10051736	Balen, Leandro	BRA	3	
5	Chief Steward	Chief Steward	10051037	Lopes Mateus, Antonio	POR	3	* a.lopesmateus@iol.pt
6	Foreign Steward	Foreign Steward	10049693	Vidal Martinez, Gabriel	URU	2	*gabrielvidal55@gmail.com
7	Assistants Stewards	Assistant Steward	10050871	Machado, Luis Pedro	POR	2	
		Assistant Steward	10106030	Montefalco, Nuno	POR	2	
		Assistant Steward	10181186	Vieira, Diana	POR	1	
		Assistant Steward	10181182	Esteves, Ricardo	POR	1	
		Assistant Steward	10106033	Paixao, Pedro	POR	1	
		Assistant Steward	10063553	Caixinha, Armindo	POR	1	
		Assistant Steward	10082821	Rosado Cameron, Jesus	ESP	1	
8	FEI Veterinary Delegate	FEI Veterinary Delegate	10051105	Barbosa, Mario	POR		
9	Veterinary Service Manager (VR Art 1103) / Treating Veterinarian (VR Art 1105)	Veterinary Service Manager	10160234	Cunha Rego, Rodrigo	POR		+ + 351.966225328
		FEI Permitted Treating Veterinarian	10192583	Jordão Santos, Miguel Andre	POR		+ + 351.966225328
10	Medical Doctor	Medical Doctor		Local Red Cross Service/Hospital de Loule			geral@hospitaldeloule.com* + + 351.28924950
11	Farrier	Farrier		Paz, Marcio	POR		+ + 351.914206195

## VI. INVITATIONS

### 1. GENERAL

Horses entered in one CSI star level may not enter another CSI star level at the same Event.

Horses may take part in national Competitions and international Competitions at the same Event only under the following conditions:

- Horses may take part in national Events up to two hours prior to the start of the international Event's Horse Inspection;
- If the national Event includes Competitions after the international Event ends, either on the same day or on the following day(s). Horses having taken part in the international Event may take part in national Competitions only, following the conclusion of the international Event.

### Invitations

For all Events at which the CSI Invitation Rules apply, a certain percentage of Athletes must be invited in descending order of the Longines Ranking, a certain percentage of Athletes will be home Athletes selected by the host NF and a certain percentage will be Athletes invited by the Organising Committee (OC); the percentages for each invitation group are established for each star level as follows:

Event Level	Athletes from the Longines Ranking	Athletes selected by the host NF	OC Invitations
CSI 5*	60%	20%	20%
CSI 4*	50%	25%	25%
CSI 3*	40%	30%	30%
CSI 2*	30%	30%	40%
CSI 2* Open, option with no Longines Ranking Competitions if the number of invited Athletes is restricted	0%	20%	80%
CSI 2* Open, option with no Longines Ranking Competitions if the number of invited Athletes is unrestricted	N/A, CSI Invitation Rules do not apply to CSI Events at which the number of Athletes invited is not restricted.		

### Longines Rankings

The Longines Rankings number 237, established three (3) months prior to this Event will be used for the invitation of Athletes. Athletes are invited through the FEI online Invitation System for Jumping in accordance with the CSI Invitation Rules (refer to Jumping Rules Annex V)

### Invitation for Tours will be apply (Invitation Rules 2.6.1. A.)

#### "2.6.1. Invitations for Tours

Events that are part of Tours (multiple Events run on consecutive weekends at the same venue) at which the number of Athletes to be invited is limited must respect the CSI Invitation Rules.

#### A. Invitation for the entire Tour

OCs of Tours that run over consecutive weeks overlapping from one month to another may use

the Longines Ranking established three months prior to the first Event of the Tour for the invitation of Athletes under Section 1 for all Events of the Tour. Published on <https://inside.fei.org> - 23.03.2020 In this case, Athletes can only select the whole Tour and cannot choose individual Events that are part of the Tour (for Tours composed of stand-alone Events see Section D). This system is applied by default to the entire Tour"

**The OC reserves the right to give invitation preference for the riders who register for all 6 weeks of the Tour**

**CSI star level: CSI 3\***

Maximum number of Athletes to be invited: 250  
Maximum number of Horses that may be entered: 1.000  
Maximum number of Horses per Athlete: 12

Maxmium number of Athletes invited	No. of Athletes from the Longines Ranking	No. of Athletes selected by the host NF	No. of OC Invitations
235	118	59	58

(OCs will be permitted to invite a limited number of additional Athletes, if, at the closing of entries, the maximum number of Horses that may be entered has not been reached. For details, please see the "Implementation of the FEI Online Invitation System for Jumping Guidelines".)

**CSI star level: CSI 4\***

Maximum number of Athletes to be invited: 220  
Maximum number of Horses that may be entered: 1.000  
Maximum number of Horses per Athlete: 7

Maxmium number of Athletes invited	No. of Athletes from the Longines Ranking	No. of Athletes selected by the host NF	No. of OC Invitations
235	118	59	58

**FEI Wild Cards:**

CSI5\*: 1  
CSI4\*/CSI3\*: 2

**Connected Events:**

There are no connected Events in this show ☒

**Section 1: Compulsory Invitations**

Athletes can choose Events for which they wish to receive an information from the Monday eight weeks prior to the week of the Event until midnight GMT on the 4<sup>th</sup> Sunday prior to the Event.

**Section 2: Home Athletes selected by the host NF**

Entries for home Athletes in this section must be made through the FEI Entry System between the Monday eight weeks prior to the week of the Event until midnight GMT on the 3<sup>rd</sup> Wednesday prior to the week of the Event.

**Section 3: OC Invitations**

Entries in the OC Invitation Quota can be made in the FEI Entry System from the Monday eight

weeks prior to the week of the Event up until the closing date for regular entries (the closing date for regular entries cannot be earlier than the 3rd Thursday prior to the week of the Event, and no later than four days prior to the Event) as indicated in the Schedule.

Events for which the Schedule states that overseas air transportation of Horses will be provided/organised by the OC are, for logistical reasons, authorised to establish the closing date for entries at the earliest on the 5<sup>th</sup> Sunday prior to the event.

***For all other Events, please use the template below:***

**CSI 1\*:**

NF's invited:	N/A
Reserve NFs:	Unlimited
Total number of athletes:	Unlimited
Number of horses per athlete:	6

**CSIYH1\*/2\***

NF's invited:	N/A
Reserve NFs:	Unlimited
Total number of athletes:	Unlimited
Number of horses per athlete:	9 horses, max 3 per age (5/6/7 yo)

**Young Horses Final: This competition is open to all horses who have participated at least 1 week before in the Tour**

Athletes are invited by the Organiser through their National Federation.

One (1) groom per athlete.

Overall maximum number of horses, that may be entered each week in all CSIs: App. 900/week in total for all categories

- Each horse can jump one class per day, but max. 3 classes per week

Due to a limited number of stables, not all reservations and entries can be accepted. Riders/horses will be accepted by order of receiving their reservation and date of deposit payment.

Preference will be given to athletes who enter the complete Tour (6 Weeks)

Prepayment of 300€/horse has to be done to the following account to confirm the reservations/entries:

CLUBE HIPICO DE VILAMOURA BANCO CREDITO AGRICOLA

IBAN: PT50 0045 7213 4026 9158 6757 8 / BIC: CCCMPTPL

The number of stables is binding with the deposit payment. The deposit is not refundable for cancellations after 25.12.2020.

Cancellations before 25.12.2020 the deposit will be refundable after finish the Tour.

## VII. ENTRIES

### IMPORTANT

- Entries must be made by NFs through the FEI Entry System for all categories of this Event (<https://invitation.fei.org/login>);
- Additional documentation can be found at: <https://inside.fei.org/fei/your-role/it-services/fei-entry-system/fei-entry-system-jumping>;
- All Athletes and Horses participating in any International Competition must be registered with the FEI;
- Athletes and/or Horses present at the Event without having been entered through the FEI's Online Entry System will be automatically disqualified unless compelling circumstances warrant otherwise.

### 1. ENTRY DATES AND ENTRY FEES

Entries have to be in accordance with Art.251 of the FEI Jumping Rules, 26th edition, updates effective 1 January 2021

#### Deadlines for Entries:

Definite Entries:	18/01/2021 for the first week
Last date for substitutions:	25/01/2021 for the first week
Definite Entries:	25/01/2021 for the second week
Last date for substitutions:	01/02/2021 for the second week
Definite Entries:	01/02/2021 for the third week
Last date for substitutions:	08/02/2021 for the third week
Definite Entries:	08/02/2021 for the fourth week
Last date for substitutions:	15/02/2021 for the fourth week
Definite Entries:	15/02/2021 for the fifth week
Last date for substitutions:	22/02/2021 for the fifth week
Definite Entries:	24/02/2021 for the sixth week
Last date for substitutions:	01/03/2021 for the sixth week

#### Entry fee per horse (per category):

VAT excluded

Category	Amount
CSI 3 *	450€
CSI 4 *	550€
CSI 1 *	400€
CSI YH	350€

VAT (in %) :

N/A

Please refer to definition of Entry fees and Compulsory fees in the Glossary of the FEI Jumping Rules 26th edition, updates effective 1 January 2021, that is copied in Section XIV point 10.

**Compulsory fees per horse:**

- EADCMP Fee: Included in entry fee ☐  
Not included in entry fee ☒
  - Lower Level Events (CIMs) CHF 18 per horse per event
  - Higher Level Events CHF 25 per horse per event(For definition of CIMs see Appendix E of the FEI General Regulations, all other events not defined as CIMs)
- Fee for manure disposal (at OC discretion; maximum € 40 per horse per Event). 40€/per week Per horse
- Fee for health/customs-related documents for Horses, if applicable (only if requested) 15€/per week Per horse

**All aforementioned amounts are including VAT**

**Total maximum fee per horse:** 55€+EADCMP fee/week

**Compulsory fees per athlete:**

- NF fee if applicable n/a Per athlete
- NF medication control programme fee if applicable n/a Per athlete
- Fee for lorry parking if applicable 40€ Per lorry/caravan
- Fee for electric hook-up for lorry 50€ Per lorry/caravan

**All aforementioned amounts are including VAT**

**Total maximum fee per Athlete:** 90€/per week

**2. OTHER FEES**

All other fees must optional fees and be listed hereunder with the details of the amounts to be charged and approved by the FEI. Only fees approved by the FEI and listed in the approved Schedule can be charged by the OC. Please specify if price per bale or other quantity.

Hay: 10€/bale

Straw: 7€ (first bedding free: 2 bales)

Shavings: 12€/bale

Other (please specify):

Non-competing Horse: 250€ per week

Tack Box: 200€ per week

Large Box: 60€/boxe/week

Permanent stables: 50€/boxe/week

Electricity and water: 10€/horse/week

**All aforementioned amounts are including VAT**

VAT number of the organiser: PT513 256 890

**IMPORTANT:**

Is not allowed to bring any Trucks, Caravans, Trailers not belonging to a rider to the stable area. Any offering or selling of products, goods and services etc. in the stable area is strictly forbidden.

The OC will not accept the delivery of hay, shavings and straw by other suppliers on the show grounds.

NOT DOGS ARE ALLOWED WITHOUT LEASH ON THE SHOW GROUND. DOGS WITHOUT LEASH IN ARENAS WILL BE FINED WITH 100€. DOGS WITHOUT LEASH ONLY ALLOWED ON THE STABLES AREA.

**3. NO-SHOWS/LATE WITHDRAWALS**

**NB:** In the case of withdrawals after the date of definite entries or no-shows the athlete or the respective NF will be held liable to reimburse the OC for the actual financial loss incurred by the OC (i.e. stabling and hotel expenses) as a result of the late withdrawal or no-show.

**Amount charged: 400€/horse week**

**PAYMENTS:** All costs to be paid at the latest on last week of rider participation, at the Show office. The account will be established, based upon the definite entries on behalf of each athlete.

Cheque will not be accepted!

All payments must be made in cash or by credit card (with credit card is + 3%).  
The Organising Committee reserves the right to withhold money due from the prize money won, as long as outstanding bills have not been paid.



## VIII. TIMETABLE

**Competitions must not start before 08:00 and must not finish after 23:00, unless prior approval is granted by the FEI.**

**As per Jumping Rules Annex VI: combined competitions are not permitted.**

*The scheduling of competitions must take into account mandatory maintenance breaks as follows. In principle, there should be one maintenance break for every 40 starters; at a minimum, it is compulsory to include one maintenance break in competitions with 50-99 starters after half of the starters have competed. Competitions with 100 starters or more must have three maintenance breaks. The start list must indicate when the maintenance break will take place (e.g. after N° 25).*

### **1<sup>st</sup> WEEK: CSI3\*/CSI1\*/CSIYH1\* 25 – 31 JANUARY**

(to be provided per category/level if multiple events)

	Day	Date	Time
• Opening of stables	Sunday	24/01/2021	08:00H
• Horse Inspection <i>All horses taking part at this Event must be present during the first horse inspection, unless unable to do so due to "force majeure"</i>	CSIYH1* CSI1*/3*	25/01/2021 28/01/2021	09:00H 09:00H
• Horse Re-Inspection	CSIYH1* CSI1*/3*	26/01/2021 29/01/2021	08:00H 08:00H
• Opening times of exercise areas	1 hour before the 1 <sup>st</sup> competition		

<b><u>Competitions CSIYH1*:</u></b>	Day	Date	Time	Art	Prize Money
Declaration of Starters	The day before each competition till 17:30H			////////	////////
• YH-01 - 5 Yo	Tuesday	26/01/2021	9:00H	238.1.1	700€
• YH-02 - 6 Yo	"	"	following	238.2.1	1.000€
• YH-03 - 7 Yo	"	"	"	238.2.1	1.700€
• YH-04 - 5 Yo	Wednesday	27/01/2021	9:00H	238.1.1	700€
• YH-05 - 6 Yo	"	"	following	238.2.2	2.300€
• YH-06 - 7 Yo	"	"	"	238.2.2	2.700€
• YH-07 - 5 Yo	Thursday	28/01/2021	9:00H	238.1.1	700€
• YH-08 - 6 Yo	"	"	following	274.2.5	1.000€
• YH-09 - 7 Yo	"	"	"	274.2.5	1.700€
• Total Prize Money	12.500€				
<b><u>Competitions CSI1*:</u></b>					
Declaration of Starters	The day before each competition till 17:30H			////////	////////
• B-01 (1,10m)	Friday	29/01/2021	10:00H	238.2.1	600€
• B-02 (1,10m)	Saturday	30/01/2021	09:00H	238.2.1	600€
• B-03 (1,10m)	Sunday	31/01/2021	09:00H	274.2.5	600€
• Total Prize Money	1.800€				

<b><u>Competitions CSI3*:</u></b>					
Declaration of Starters	The day before each competition till 17:30H			////////	////////
• A-01 Medium Tour(1,30m)	Thursday	28/01/2021	following	238.2.1	2.000€
• A-02 Medium Tour(1,35m)	"	"	"	238.2.1	2.500€
• A-03 Big Tour(1,45m)	"	"	"	238.2.1	LR 25.700€
• A-04 Small Tour(1,20m)	Friday	29/01/2021	"	238.2.1	1.000€
• A-05 Medium Tour(1,35m)	"	"	"	274.1.5.3	2.500€
• A-06 Big Tour(1,40m)	"	"	"	238.2.1	4.000€
• A-07 Big Tour(1,45m)	"	"	"	238.2.2	LR 25.700€
• A-08 Small Tour(1,20m)	Saturday	30/01/2021	"	274.2.5	1.000€

**FEI APPROVED SCHEDULE**  
**Vilamoura 25 January – 07 March 2021**



• A-09 Medium Tour(1,30m)	"	"	"	274.1.5.3	2.000€
• A-10 Medium Tour(1,35m)	"	"	"	238.2.2	2.500€
• A-11 Big Tour(1,40m)	"	"	"	238.2.2	8.000€
• A-12 Small Tour(1,20m)	Sunday	31/01/2021	"	238.2.2	1.000€
• A-13 Medium Tour(1,30m)	"	"	"	238.2.1	2.000€
• A-14 Big Tour(1,40m)	"	"	"	238.2.1	4.000€
• A-15 Big Tour–GP(1,50m)	"	"	"	238.2.2	<b>LR 51.700€</b>
• Total Prize Money	<b>135.600€</b>				

**Overall Prize Money: 149.900€**

**2<sup>nd</sup> WEEK:CSI 1\*/CSI 3\*/CSIYH1\* 01 -07 FEBRUARY**

*(to be provided per category/level if multiple events)*

	Day	Date	Time
• Horse Inspection <i>All horses taking part at this Event must be present during the first horse inspection, unless unable to do so due to "force majeure"</i>	CSIYH1* CSI1*/3*	01/02/2021 03/02/2021	09:00H 09:00H
• Horse Re-Inspection	CSIYH1* CSI1*/3*	02/02/2021 04/02/2021	08:00H 08:00H
• Opening times of exercise areas	1 hour before the 1 <sup>st</sup> competition		

<u>Competitions CSIYH1*:</u>	Day	Date	Time	Art	Prize Money
Declaration of Starters	The day before each competition till 17:30H			////////	////////
• YH-10 - 5 Yo	Tuesday	02/02/2021	9:00H	238.1.1	700€
• YH-11 - 6 Yo	"	"	following	238.2.1	1.000€
• YH-12 - 7 Yo	"	"	"	238.2.1	1.700€
• YH-13 - 5 Yo	Wednesday	03/02/2021	9:00H	238.1.1	700€
• YH-14 - 6 Yo	"	"	following	238.2.2	2.300€
• YH-15 - 7 Yo	"	"	"	238.2.2	2.700€
• YH-16 - 5 Yo	Thursday	04/02/2021	9:00H	238.1.1	700€
• YH-17 - 6 Yo	"	"	following	274.2.5	1.000€
• YH-18 - 7 Yo	"	"	"	274.2.5	1.700€
• Total Prize Money	12.500€				
<u>Competitions CSI 1*:</u>					
Declaration of Starters	The day before each competition till 17:30H			////////	////////
• B-04 (1,10m)	Friday	05/02/2021	10:00H	238.2.1	600€
• B-05 (1,10m)	Saturday	06/02/2021	09:00H	274.2.5	600€
• B-06 (1,10m)	Sunday	07/02/2021	09:00H	269	600€
• Total Prize Money	1.800€				

<b>Competitions CSI 3*:</b>					
Declaration of Starters	The day before each competition till 17:30H			////////	////////
• A-16 Medium Tour(1,30m)	Thursday	04/02/2021	following	238.2.1	2.000€
• A-17 Big Tour(1,40m)	"	"	"	238.2.1	4.000€
• A-18 Big Tour(1,45m)	"	"	"	238.2.1	<b>LR 25.700€</b>
• A-19 Small Tour(1,20m)	Friday	05/02/2021	"	238.2.1	1.000€
• A-20 Medium Tour(1,35m)	"	"	"	274.1.5.3	2.500€
• A-21 Big Tour(1,40m)	"	"	"	274.2.5	4.000€
• A-22 Big Tour(1,45m)	"	"	"	238.2.2	<b>LR 25.700€</b>
• A-23 Small Tour(1,20m)	Saturday	06/02/2021	"	274.1.5.3	1.000€

**FEI APPROVED SCHEDULE**  
**Vilamoura 25 January – 07 March 2021**



• A-24 Medium Tour(1,30m)	"	"	"	274.2.5	2.000€
• A-25 Medium Tour(1,35m)	"	"	"	238.2.1	2.500€
• A-26 Big Tour(1,40m)	"	"	"	238.2.2	8.000€
• A-27 Small Tour(1,20m)	Sunday	07/02/2021	"	238.2.2	1.000€
• A-28 Medium Tour(1,30m)	"	"	"	238.2.1	2.000€
• A-29 Medium Tour(1,35m)	"	"	"	238.2.2	2.500€
• A-30 Big Tour–GP(1,50m)	"	"	"	238.2.2	<b>LR 51.700€</b>
• Total Prize Money	<b>135.600€</b>				

**Overall Prize Money: 149.900€**

**3<sup>rd</sup> WEEK: CSI3\*/CSI1\*/CSIYH1\* 08 – 14 FEBRUARY**

(to be provided per category/level if multiple events)

	Day	Date	Time
• Horse Inspection <i>All horses taking part at this Event must be present during the first horse inspection, unless unable to do so due to "force majeure"</i>	CSIYH1* CSI1*/3*	08/02/2021 10/02/2021	09:00H 09:00H
• Horse Re-Inspection	CSIYH1* CSI1*/3*	09/02/2021 11/02/2021	08:00H 08:00H
• Opening times of exercise areas	1 hour before the 1 <sup>st</sup> competition		

<b><u>Competitions CSIYH1*:</u></b>	Day	Date	Time	Art	Prize Money
Declaration of Starters	The day before each competition till 17:30H			////////	////////
• YH-19 - 5 Yo	Tuesday	09/02/2021	9:00H	238.1.1	700€
• YH-20 - 6 Yo	"	"	following	238.2.1	1.000€
• YH-21 - 7 Yo	"	"	"	238.2.1	1.700€
• YH-22 - 5 Yo	Wednesday	10/02/2021	9:00H	238.1.1	700€
• YH-23 - 6 Yo	"	"	following	238.2.2	2.300€
• YH-24 - 7 Yo	"	"	"	238.2.2	2.700€
• YH-25 - 5 Yo	Thursday	11/02/2021	9:00H	238.1.1	700€
• YH-26 - 6 Yo	"	"	following	274.2.5	1.000€
• YH-27 - 7 Yo	"	"	"	274.2.5	1.700€
• Total Prize Money	12.500€				
<b><u>Competitions CSI1*:</u></b>					
Declaration of Starters	The day before each competition till 17:30H			////////	////////
• B-07 (1,10m)	Friday	12/02/2021	10:00H	238.2.1	600€
• B-08 (1,10m)	Saturday	13/02/2021	09:00H	274.2.5	600€
• B-09 (1,10m)	Sunday	14/02/2021	09:00H	238.2.1	600€
• Total Prize Money	1.800€				

Competitions CSI3*:					
Declaration of Starters	The day before each competition till 17:30H			////////	//////////
• A-31 Medium Tour(1,30m)	Thursday	11/02/2021	following	238.2.1	2.000€
• A-32 Big Tour(1,40m)	"	"	"	238.2.1	4.000€
• A-33 Big Tour(1,45m)	"	"	"	238.2.1	LR 25.700€
• A-34 Small Tour(1,20m)	Friday	12/02/2021	"	238.2.1	1.000€
• A-35 Medium Tour(1,35m)	"	"	"	274.1.5.3	2.500€
• A-36 Big Tour(1,40m)	"	"	"	238.2.1	4.000€
• A-37 Big Tour(1,45m)	"	"	"	238.2.2	LR 25.700€
• A-38 Small Tour(1,20m)	Saturday	13/02/2021	"	274.1.5.3	1.000€
• A-39 Medium Tour(1,30m)	"	"	"	274.2.5	2.000€

**FEI APPROVED SCHEDULE**  
**Vilamoura 25 January – 07 March 2021**



• A-40 Medium Tour(1,35m)	"	"	"	269	2.500€
• A-41 Big Tour(1,40m)	"	"	"	238.2.2	8.000€
• A-42 Big Tour (1,40m)	"	"	"	238.2.1	4.000€
• A-43 Small Tour(1,20m)	Sunday	14/02/2021	"	238.2.1	1.000€
• A-44 Medium Tour(1,30m)	"	"	"	269	2.000€
• A-45 Medium Tour(1,35m)	"	"	"	238.2.2	2.500€
• A-46 Big Tour–GP(1,50m)	"	"	"	238.2.2	<b>LR 51.700€</b>
• Total Prize Money	<b>139.600€</b>				

**Overall Prize Money: 153.900€**

**4<sup>th</sup> WEEK: CSI3\*/CSI1\*/CSIYH1\* 15 - 21 FEBRUARY**

(to be provided per category/level if multiple events)

	Day	Date	Time
• Horse Inspection <i>All horses taking part at this Event must be present during the first horse inspection, unless unable to do so due to "force majeure"</i>	CSIYH1* CSI1*/3*	15/02/2021 17/02/2021	09:00H 09:00H
• Horse Re-Inspection	CSIYH1* CSI1*/3*	16/02/2021 18/02/2021	08:00H 08:00H
• Opening times of exercise areas	1 hour before the 1 <sup>st</sup> competition		

<b>Competitions CSIYH1*:</b>	Day	Date	Time	Art	Prize Money
Declaration of Starters	The day before each competition till 17:30H			////////	////////
• YH-28 - 5 Yo	Tuesday	16/02/2021	9:00H	238.1.1	700€
• YH-29 - 6 Yo	"	"	following	238.2.1	1.000€
• YH-30 - 7 Yo	"	"	"	238.2.1	1.700€
• YH-31 - 5 Yo	Wednesday	17/02/2021	9:00H	238.1.1	700€
• YH-32 - 6 Yo	"	"	following	238.2.2	2.300€
• YH-33 - 7 Yo	"	"	"	238.2.2	2.700€
• YH-34 - 5 Yo	Thursday	18/02/2021	9:00H	238.1.1	700€
• YH-35 - 6 Yo	"	"	following	274.2.5	1.000€
• YH-36 - 7 Yo	"	"	"	274.2.5	1.700€
• Total Prize Money	<b>12.500€</b>				
<b>Competitions CSI1*:</b>	Day	Date	Time	Art	Prize Money
Declaration of Starters	The day before each competition till 17:30H			////////	////////
• B-10 (1,10m)	Friday	19/02/2021	10:00H	238.2.1	600€
• B-11 (1,10m)	Saturday	20/02/2021	09:00H	269	600€
• B-12 (1,10m)	Sunday	21/02/2021	09:00H	274.2.5	600€
• Total Prize Money	<b>1.800€</b>				

<b>Competitions CSI3*:</b>	Day	Date	Time	Art	Prize Money
Declaration of Starters	The day before each competition till 17:30H			////////	////////
• A-47 Medium Tour(1,30m)	Thursday	18/02/2021	following	238.2.1	2.000€
• A-48 Big Tour(1,40m)	"	"	"	238.2.1	4.000€
• A-49 Big Tour(1,45m)	"	"	"	238.2.1	<b>LR 25.700€</b>
• A-50 Small Tour(1,20m)	Friday	19/02/2021	"	238.2.1	1.000€
• A-51 Medium Tour(1,35m)	"	"	"	274.2.5	2.500€
• A-52 Big Tour(1,40m)	"	"	"	238.2.1	4.000€
• A-53 Big Tour(1,45m)	"	"	"	238.2.2	<b>LR 25.700€</b>
• A-54 Small Tour(1,20m)	Saturday	20/02/2021	"	274.1.5.3	1.000€
• A-55 Medium Tour(1,30m)	"	"	"	274.2.5	2.000€

**FEI APPROVED SCHEDULE**  
**Vilamoura 25 January – 07 March 2021**



• A-56 Medium Tour(1,35m	"	"	"	238.2.1	2.500€
• A-57 Big Tour(1,40m)	"	"	"	238.2.2	8.000€
• A-58 Big Tour(1,40m)	"	"	"	238.2.1	4.000€
• A-59 Small Tour(1,20m)	Sunday	21/02/2021	"	238.2.1	1.000€
• A-60 Medium Tour(1,30m	"	"	"	238.2.1	2.000€
• A-61 Medium Tour(1,35m				238.2.2	2.500€
• A-62 Big Tour–GP(1,50m)	"	"	"	238.2.2	LR 51.700€
• Total Prize Money	139.600€				

**Overall Prize Money: 153.900€**

**5<sup>th</sup> WEEK: CSI3\*/CSI1\*/CSIYH2\* 22 - 28 FEBRUARY**

(to be provided per category/level if multiple events)

	Day	Date	Time
• Horse Inspection <i>All horses taking part at this Event must be present during the first horse inspection, unless unable to do so due to "force majeure"</i>	CSIYH2* CSI1*/3*	21/02/2021 26/02/2020	09:00H 09:00H
• Horse Re-Inspection	CSIYH1* CSI1*/3*	22/02/2021 27/02/2021	08:00H 08:00H
• Opening times of exercise areas	1 hour before the 1 <sup>st</sup> competition		

<u>Competitions CSIYH2*:</u>		Day	Date	Time	Art	Prize Money
Declaration of Starters		The day before each competition till 17:30H			////////	////////
• YH-37 - 5 Yo	Monday	22/02/2021	09:00H	273.2.1/ 273.3.4.1/ 273.4.4	-----	
• YH-38 - 6 Yo	"	"	following		-----	
• YH-39 - 7 Yo	Tuesday	23/02/2021	09:00H		-----	
• YH-40 - 6 Yo	"	"	following		15.000€	
• YH-41 - 5 Yo	Wednesday	24/02/2021	09:00H		5.000€	
• YH-42 - 7 Yo	"	"	following		LR 25.700€	
• Total Prize Money		45.700€				

Competitions CSI 1*:					
Declaration of Starters		The day before each competition till 17:30H		////////	////////
• B-13 (1,10m)	Friday	26/02/2021	10:00H	238.2.1	600€
• B-14 (1,10m)	Saturday	27/02/2021	09:00H	238.2.1	600€
• B-15 (1,10m)	Sunday	28/02/2021	09:00H	274.2.5	600€
• Total Prize Money		1.800€			

Competitions CSI 3*:					
Declaration of Starters	The day before each competition till 17:30H			////////	////////
• A-63 Medium Tour(1,30m)	Thursday	25/02/2021	following	238.2.1	2.000€
• A-64 Big Tour(1,40m)	"	"	"	238.2.1	4.000€
• A-65 Big Tour(1,45m)	"	"	"	238.2.1	LR 25.700€
• A-66 Small Tour(1,20m)	Friday	26/02/2021	"	238.2.1	1.000€
• A-67 Medium Tour(1,35m)	"	"	"	269	2.500€
• A-68 Big Tour(1,40m)	"	"	"	238.2.1	4.000€
• A-69 Big Tour(1,45m)	"	"	"	238.2.2	LR 25.700€
• A-70 Small Tour(1,20m)	Saturday	27/02/2021	"	274.1.5.3	1.000€
• A-71 Medium Tour(1,30m)	"	"	"	274.2.5	2.000€
• A-72 Medium Tour(1,35m)	"	"	"	238.2.1	2.500€

**FEI APPROVED SCHEDULE**  
**Vilamoura 25 January – 07 March 2021**



• A-73 Big Tour(1,40m)	"	"	"	238.2.2	8.000€
• A-74 Big Tour(1,40m)	"	"	"	238.2.1	4.000€
• A-75 Small Tour(1,20m)	Sunday	28/02/2021	"	238.2.2	1.000€
• A-76 Medium Tour(1,30m)	"	"	"	238.2.1	2.000€
• A-77 Medium Tour(1,35m)				238.2.2	2.500€
• A-78 Big Tour–GP(1,50m)	"	"	"	238.2.2	<b>LR 51.700€</b>
• Total Prize Money	<b>139.600€</b>				

**Overall Prize Money: 187.100€**

**6<sup>th</sup> WEEK: CSI4\*/CSI1\*/CSIYH1\* 01 – 07 MARCH**

(to be provided per category/level if multiple events)

	Day	Date	Time
• Horse Inspection <i>All horses taking part at this Event must be present during the first horse inspection, unless unable to do so due to "force majeure"</i>	CSIYH1* CSI1*/4*	01/03/2021 03/03/2021	09:00H 09:00H
• Horse Re-Inspection	CSIYH1* CSI1*/4*	02/03/2021 04/03/2021	08:00H 08:00H
• Opening times of exercise areas	1 hour before the 1 <sup>st</sup> competition		

<b>Competitions CSIYH1*</b>					
	Day	Date	Time	Art	Prize Money
Declaration of Starters	The day before each competition till 17:30H			////////	////////
• YH-43 - 5 Yo	Tuesday	02/03/2021	9:00H	238.1.1	500€
• YH-44 - 6 Yo	"	"	following	238.2.1	800€
• YH-45 - 7 Yo	"	"	"	238.2.1	1.000€
• YH-46 - 5 Yo	Wednesday	03/03/2021	9:00H	238.1.1	700€
• YH-47 - 6 Yo	"	"	following	238.2.2	1.000€
• YH-48 - 7 Yo	"	"	"	238.2.2	1.500€
• YH-49 - 5 Yo	Thursday	04/03/2021	9:00H	238.1.1	500€
• YH-50 - 6 Yo	"	"	following	274.2.5	800€
• YH-51 - 7 Yo	"	"	"	274.2.5	1.000€
• Total Prize Money	<b>7.800€</b>				

**Competitions CSI1\*:**

Declaration of Starters	The day before each competition till 17:30H			////////	////////
• B-16 (1,10m)	Friday	05/03/2021	09:00H	238.2.1	600€
• B-17 (1,20m)	"	"	Following	274.2.5	1.000€
• B-18 (1,10m)	Saturday	06/03/2021	09:00H	269	600€
• B-19 (1,20m)	"	"	Following	238.2.2	1.000€
• B-20 (1,10m)	Sunday	07/03/2021	09:00H	238.2.1	600€
• B-21 (1,20m)	"	"	Following	274.2.5	1.000€
• Total Prize Money	<b>4.800€</b>				

**Competitions CSI4\*:**

Declaration of Starters	The day before each competition till 17:30H			////////	////////
• A-79 Medium Tour(1,35m)	Thursday	04/03/2021	following	238.2.1	2.500€
• A-80 Big Tour (1,40m)	"	"	"	238.2.1	5.000€
• A-81 Big Tour(1,45/1,50m)	"	"	"	238.2.1	<b>LR 25.700€</b>
• A-82 Medium Tour(1,30m)	Friday	05/03/2021	"	238.2.1	2.000€
• A-83 Big Tour (1,40m)	"	"	"	274.2.5	5.000€
• A-84 Big Tour(1,45/1,50m)	"	"	"	238.2.2	<b>LR 25.700€</b>

**FEI APPROVED SCHEDULE**  
**Vilamoura 25 January – 07 March 2021**



•A-85 Medium Tour(1,30m)	Saturday	06/03/2021	"	274.2.5	2.000€
•A-86 Medium our(1,35m)	"	"	"	274.2.5	2.500€
•A-87 Medium Tour(1,40m)	"	"	"	238.2.2	12.000€
•A-88 Medium Tour(1,30m)	Sunday	07/03/2021	"	269	2.000€
•A-89 Big Tour (1,50m)	"	"	"	238.2.2	LR 30.000€
•A-90 Big Tour–GP(1,60m)	"	"	"	238.2.2	LR 100.000€
• Total Prize Money	214.400€				

**Overall Prize Money: 227.000€**

**Applicable government tax to be deducted from Prize Money (see also XIV.8): 25%**

## IX. COMPETITION DETAIL

**1<sup>st</sup> WEEK: 26 – 31 JANUARY 2021**

**CSI3\*/CSI1\*/CSIYH1\***

**FIRST DAY : Tuesday**

**DATE: 26/01/2021**

**COMPETITION No: YH-01**

**Time: 09:00H**

**Young horses 5 years old**

238.1.1 (Table A not against the clock)

Jump-off (if any)

No

Speed/Fixed time

350m/min.

Height of obstacles:

1,10m

Number of horses per athlete

3

Number of Starters:

\*100 (if more than 100 take part then please refer to Section XIV point 9)

Total prize money:

700€

Chart to be used:

1 (25% to winner)

Please specify prize money amount for each athlete placed 13<sup>th</sup> and beyond: 5€

**COMPETITION No: YH-02**

**Time: following**

**Young horses 6 years old**

238.2.1 (Table A against the clock)

Jump-off (if any)

No

Speed/Fixed time

350m/min.

Height of obstacles:

1,20m

Number of horses per athlete

3

Number of Starters:

\*100 (if more than 100 take part then please refer to Section XIV point 9)

Total prize money:

1.000€

Chart to be used:

1 (25% to winner)

Please specify prize money amount for each athlete placed 13<sup>th</sup> and beyond: 5€

**COMPETITION No: YH-03**

**Time: following**

**Young horses 7 years old**

238.2.1 (Table A against the clock)

Jump-off (if any)

No

Speed/Fixed time

350m/min.

Height of obstacles:

1,30m

Number of horses per athlete

3

Number of Starters:

\*100 (if more than 100 take part then please refer to Section XIV point 9)

Total prize money:

1.700€

Chart to be used:

1 (25% to winner)

Please specify prize money amount for each athlete placed 13<sup>th</sup> and beyond: 5€



**SECOND DAY : Wednesday**

**DATE : 27/01/2021**

**COMPETITION No: YH-04**

**Time: 09:00H**

**Young horses 5 years old** 238.1.1 (Table A not against the clock)  
Jump-off (if any) No  
Speed/Fixed time 350m/min.  
Height of obstacles: 1,10m  
Number of horses per athlete 3  
Number of Starters: \*100 (if more than 100 take part then please refer to Section XIV point 9)  
Total prize money: 700€  
Chart to be used: 1 (25% to winner)  
Please specify prize money amount for each athlete placed 13<sup>th</sup> and beyond: 5€

**COMPETITION No: YH-05**

**Time: following**

**Young horses 6 years old** 238.2.2 (Table A against the clock with jump off)  
Jump-off (if any) 1 against the clock  
Speed/Fixed time 350m/min.  
Height of obstacles: 1,20m  
Number of horses per athlete 3  
Number of Starters: \*100 (if more than 100 take part then please refer to Section XIV point 9)  
Total prize money: 2.300€  
Chart to be used: 1 (25% to winner)  
Please specify prize money amount for each athlete placed 13<sup>th</sup> and beyond: 5€

**COMPETITION No: YH-06**

**Time: following**

**Young horses 7 years old** 238.2.2 (Table A against the clock with Jump-off)  
Jump-off (if any) 1 against the clock  
Speed/Fixed time 350m/min.  
Height of obstacles: 1,30m  
Number of horses per athlete 3  
Number of Starters: \*100 (if more than 100 take part then please refer to Section XIV point 9)  
Total prize money: 2.700€  
Chart to be used: 1 (25% to winner)  
Please specify prize money amount for each athlete placed 13<sup>th</sup> and beyond: 5€

**THIRD DAY : Thursday**

**DATE : 28/01/2021**

**COMPETITION No: YH-07**

**Time: 09:00H**

**Young horses 5 years old**

238.1.1 (Table A not against the clock)

Jump-off (if any)

No

Speed/Fixed time

350m/min.

Height of obstacles:

1,10m

Number of horses per athlete

3

Number of Starters:

\*100 (if more than 100 take part then please refer to Section XIV point 9)

Total prize money:

700€

Chart to be used:

1 (25% to winner)

Please specify prize money amount for each athlete placed 13<sup>th</sup> and beyond: 5€

**COMPETITION No YH-08**

**Time: following**

**Young Horses 6 years old:**

274.2.5 (Two phases, 1<sup>st</sup> not against the clock, 2<sup>nd</sup> against the clock)

Jump-off (if any)

No

Speed/Fixed time

350m/min.

Height of obstacles:

1,20m

Number of horses per athlete

3

Maximum number of Starters:

\*100 (if more than 100 take part then please refer to Section XIV point 9)

Total prize money

1.000€

Chart to be used:

1 (25% to winner)

Please specify prize money amount for athlete placed beyond 13<sup>th</sup> : 5€

**COMPETITION No: YH-09**

**Time: following**

**Young horses 7 years old**

274.2.5 (Two phases, 1<sup>st</sup> not against the clock, 2<sup>nd</sup> against the clock)

Jump-off (if any)

No

Speed/Fixed time

375m/min.

Height of obstacles:

1,30m

Number of horses per athlete

3

Number of Starters:

\*100 (if more than 100 take part then please refer to Section XIV point 9)

Total prize money:

1.700€

Chart to be used:

1 (25% to winner)

Please specify prize money amount for each athlete placed 13<sup>th</sup> and beyond: 5€

**COMPETITION No A-01 CSI 3\***

**Time: following**

<b>Medium Tour:</b>	238.2.1 (Table A against the clock)
Jump-off (if any)	No
Speed/Fixed time	375m/min.
Height of obstacles:	1,30m
Number of horses per athlete	3
Maximum number of Starters:	*100 (if more than 100 take part then please refer to Section XIV point 9)
Total prize money	2.000€
Chart to be used:	1 (25% to winner)
Please specify prize money amount for athlete placed beyond 13 <sup>th</sup> : 10€	

**COMPETITION No A-02 CSI 3\***

**Time: following**

<b>Medium Tour:</b>	238.2.1 (Table A against the clock)
Jump-off (if any)	No
Speed/Fixed time	375m/min.
Height of obstacles:	1,35m
Number of horses per athlete	3
Maximum number of Starters:	*100 (if more than 100 take part then please refer to Section XIV point 9)
Total prize money	2.500€
Chart to be used:	1 (25% to winner)
Please specify prize money amount for athlete placed beyond 13 <sup>th</sup> : 10€	

**COMPETITION No A-03 CSI 3\***

**Time: following**

**Qualifier for the G.P.**

**This Competition counts for the FEI Longines Ranking Group D**

<b>Big Tour:</b>	238.2.1 (Table A against the clock)
Jump-off (if any)	No
Speed/Fixed time	375m/min.
Height of obstacles:	1,45m
Number of horses per athlete	2
Maximum number of Starters:	*100 (if more than 100 take part then please refer to Section XIV point 9)
Total prize money	<b>25.700€</b>
Chart to be used:	1 (25% to winner)
Please specify prize money amount for athlete placed beyond 13 <sup>th</sup> : 50€	

**FOURTH DAY : Friday**

**DATE: 29/01/2021**

**COMPETITION No B-01 CSI 1 \***

**Time: following**

<b>Small Tour :</b>	238.2.1 (Table A against the clock)
Jump-off (if any)	No
Speed/Fixed time	350m/min.
Height of obstacles:	1,10m
Number of horses per athlete	3
Maximum number of Starters:	*100 (if more than 100 take part then please refer to Section XIV point 9)
Total prize money	600€
Chart to be used:	1 (25% to winner)
Please specify prize money amount for athlete placed beyond 13 <sup>th</sup> : 5€	

**COMPETITION No A-04 CSI 3 \***

**Time: following**

<b>Small Tour:</b>	238.2.1 (Table A against the clock)
Jump-off (if any)	No
Speed/Fixed time	350m/min.
Height of obstacles:	1,20m
Number of horses per athlete	3
Maximum number of Starters:	*100 (if more than 100 take part then please refer to Section XIV point 9)
Total prize money	1.000€
Chart to be used:	1 (25% to winner)
Please specify prize money amount for athlete placed beyond 13 <sup>th</sup> : 5€	

**COMPETITION No A-05 CSI 3 \***

**Time: following**

<b>Medium Tour:</b>	274.1.5.3 (Two phases, both against the clock - Table A)
Jump-off (if any)	No
Speed/Fixed time	375m/min.
Height of obstacles:	1,35m
Number of horses per athlete	3
Maximum number of Starters:	*100 (if more than 100 take part then please refer to Section XIV point 9)
Total prize money	2.500€
Chart to be used:	1 (25% to winner)
Please specify prize money amount for athlete placed beyond 13 <sup>th</sup> : 10€	

**COMPETITION No A-06 CSI 3\***

**Time: following**

<b>Big Tour:</b>	238.2.1 (Table A against the clock)
Jump-off (if any)	No
Speed/Fixed time	375m/min.
Height of obstacles:	1,40m
Number of horses per athlete	2
Maximum number of Starters:	*100 (if more than 100 take part then please refer to Section XIV point 9)
Total prize money	4.000€
Chart to be used:	1 (25% to winner)
Please specify prize money amount for athlete placed beyond 13 <sup>th</sup> : 20€	

**COMPETITION No A-07 CSI 3\***

**Time: following**

**Qualifier for the G.P.**

**This Competition counts for the FEI Longines Ranking Group D**

<b>Big Tour:</b>	238.2.2 (Table A against the clock with jump off)
Jump-off (if any)	1 against the clock
Speed/Fixed time	375m/min.
Height of obstacles:	1,45m
Number of horses per athlete	2
Maximum number of Starters:	*100 (if more than 100 take part then please refer to Section XIV point 9)
Total prize money	<b>25.700€</b>
Chart to be used:	1 (25% to winner)
Please specify prize money amount for athlete placed beyond 13 <sup>th</sup> : 50€	

**FIFTH DAY : Saturday**

**DATE: 30/01/2021**

**COMPETITION No B-02 CSI 1\***

**Time: 09:00H**

<b>Small Tour:</b>	238.2.1 (Table A against the clock)
Jump-off (if any)	No
Speed/Fixed time	350m/min.
Height of obstacles:	1,10m
Number of horses per athlete	3
Maximum number of Starters:	*100 (if more than 100 take part then please refer to Section XIV point 9)
Total prize money	600€
Chart to be used:	1 (25% to winner)
Please specify prize money amount for athlete placed beyond 13 <sup>th</sup> : 5€	

**COMPETITION No A-08 CSI 3\***

**Time: following**

<b>Small Tour:</b>	274.2.5 (Two phases, 1 <sup>st</sup> not against the clock, 2 <sup>nd</sup> against the clock)
Jump-off (if any)	No
Speed/Fixed time	350m/min.
Height of obstacles:	1,20m
Number of horses per athlete	3
Maximum number of Starters:	*100 (if more than 100 take part then please refer to Section XIV point 9)
Total prize money	1.000€
Chart to be used:	1 (25% to winner)
Please specify prize money amount for athlete placed beyond 13 <sup>th</sup> : 5€	

**COMPETITION No A-09 CSI 3\***

**Time: following**

<b>Medium Tour:</b>	274.1.5.3 (Two phases, both against the clock - Table A)
Jump-off (if any)	No
Speed/Fixed time	375m/min.
Height of obstacles:	1,30m
Number of horses per athlete	3
Maximum number of Starters:	*100 (if more than 100 take part then please refer to Section XIV point 9)
Total prize money	2.000€
Chart to be used:	1 (25% to winner)
Please specify prize money amount for athlete placed beyond 13 <sup>th</sup> : 10€	

**COMPETITION No A-10 CSI 3\***

**Time: following**

<b>Medium Tour :</b>	238.2.2 (Table A against the clock with Jump-off)
Jump-off (if any)	1 against the clock
Speed/Fixed time	375m/min.
Height of obstacles:	1,35m
Number of horses per athlete	3
Maximum number of Starters:	*100 (if more than 100 take part then please refer to Section XIV point 9)
Total prize money	2.500€
Chart to be used:	1 (25% to winner)
Please specify prize money amount for athlete placed beyond 13 <sup>th</sup> : 10€	

**COMPETITION No A-11 CSI 3\***

**Time: following**

<b>Big Tour:</b>	238.2.2 (Table A against the clock with jump off)
Jump-off (if any)	1 against the clock
Speed/Fixed time	375m/min.
Height of obstacles:	1,40m
Number of horses per athlete	1
Maximum number of Starters:	*100 (if more than 100 take part then please refer to Section XIV point 9)
Total prize money	8.000€
Chart to be used:	1 (25% to winner)
Please specify prize money amount for athlete placed beyond 13 <sup>th</sup> : 20€	

**SIXTH DAY : Sunday**

**DATE: 31/01/2021**

**COMPETITION No B-03 CSI 1\***

**Time: 09:00H**

<b>Small Tour:</b>	274.2.5 (Two phases, 1 <sup>st</sup> not against the clock, 2 <sup>nd</sup> against the clock)
Jump-off (if any)	No
Speed/Fixed time	350m/min.
Height of obstacles:	1,10/1,15m
Number of horses per athlete	3
Maximum number of Starters:	*100 (if more than 100 take part then please refer to Section XIV point 9)
Total prize money	600€
Chart to be used:	1 (25% to winner)
Please specify prize money amount for athlete placed beyond 13 <sup>th</sup> : 5€	

**COMPETITION No A-12 CSI 3\***

**Time: following**

<b>Small Tour:</b>	238.2.2 (Table A against the clock with Jump-off)
Jump-off (if any)	1 against the clock
Speed/Fixed time	350m/min.
Height of obstacles:	1,20m
Number of horses per athlete	3
Maximum number of Starters:	*100 (if more than 100 take part then please refer to Section XIV point 9)
Total prize money	1.000€
Chart to be used:	1 (25% to winner)
Please specify prize money amount for athlete placed beyond 13 <sup>th</sup> : 5€	

**COMPETITION No A-13 CSI 3\***

**Time: following**

<b>Medium Tour:</b>	238.2.1 (Table A against the clock)
Jump-off (if any)	No
Speed/Fixed time	375m/min.
Height of obstacles:	1,30m
Number of horses per athlete	3
Maximum number of Starters:	*100 (if more than 100 take part then please refer to Section XIV point 9)
Total prize money	2.000€
Chart to be used:	1 (25% to winner)
Please specify prize money amount for athlete placed beyond 13 <sup>th</sup> : 10€	

**COMPETITION No A-14 CSI 3\***

**Time: following**

<b>Big Tour :</b>	238.2.1 (Table A against the clock)
Jump-off (if any)	No
Speed/Fixed time	375m/min.
Height of obstacles:	1,40m
Number of horses per athlete	2
Maximum number of Starters:	*100 (if more than 100 take part then please refer to Section XIV point 9)
Total prize money	4.000€
Chart to be used:	1 (25% to winner)
Please specify prize money amount for athlete placed beyond 13 <sup>th</sup> : 20€	

**COMPETITION No A-15 CSI 3\***

**Time: following**

This Competition counts for the FEI Longines Ranking Group C

**Big Tour: Grand Prix** 238.2.2 (Table A against the clock with jump off)  
+ FEI Olympic Regulations Art. 632.6.1 / JRs Annex VIII, Art. 4.11 / JRs Annex VIII, Art. 3.11

Jump-off (if any)	1 against the clock
Speed/Fixed time	375m/min.
Height of obstacles:	1,50m (2 verticals of 1m60 compulsory)
Number of horses per athlete	1
Maximum number of Starters:	60

This GP is open to 60 riders of the CSI qualified under the following conditions:

The following Athletes (not Athlete/Horse combinations) are automatically qualified for the Grand Prix at CSI Events, if present:

- 261.4.2.1. The winner of that Event's Grand Prix the previous year;
- 261.4.2.2. The current National Jumping Champion of the host country;
- 261.4.2.3. The individual Jumping medal winners of the last Olympic and Pan-American Games, the last World and Continental Championships and the winner of the last FEI World Cup™ Jumping Final.

**Athletes qualified for the Grand Prix :**

The best 40 Athletes in competition n° **A-03**

The best 20 Athletes in competition n° **A-07**, not qualified in competition **A-03** to reach a total of 60 starters (including prequalified riders).



Qualified athletes who decide not to start until 4 hours before the start of the competition, will be replaced with the following placed athletes in the class in which they got qualified

All athletes qualified for the Grand Prix, including those automatically qualified must complete, with their Grand Prix horse, the initial round of at least one FEI competition among those listed in JRs Art. 261.4.4 prior to the Grand Prix.

Total prize money **51.700€**  
Chart to be used: 1 (25% to winner)  
Please specify prize money amount for athlete placed beyond 13<sup>th</sup> : 50€

**Qualifier for Tokyo Olympic Games in 2021 / CH-EU-S 2021\* / CH-M-S 2022 (Certificates of Capability)**

*\*Final confirmation on the holding of these Championships to be provided in early 2021.*

**Counting for Tokyo Olympic Games 2021 / CH-EU-S 2021**

*This competition will count as a competition where athletes and horses can achieve the Minimum Eligibility Requirements (MER) providing the course meets the following specifications: consist of at least 12 obstacles which may vary in height between 1.40m and 1.60m. The spread obstacles must have spreads of between 1.50m to 2.00m (2.20m for the triple bar). At least two vertical obstacles must be provided with a minimum height of 1.60m.*

**Counting for CH-M-S 2022**

*This competition will count as a competition where athletes and horses can achieve the Minimum Eligibility Requirements (MER) providing the course meets the following specifications: consist of at least 12 obstacles which may vary in height between 1.40m and 1.60m. The spread obstacles must have spreads of between 1.50m to 2.00m (2.20m for the triple bar). At least two vertical obstacles must be provided with a minimum height of 1.60m. In addition to these requirements the competition must comply with the following mandatory requirements to count for the CH-M-S 2022:*

- The first obstacle may be a vertical minimum height 1m45 or an oxer minimum height 1m40 for the front pole and 1m45 for the back pole;*
- One set of planks on flat cups;*
- Triple bar minimum 1m80 spread and 1m50 height;*
- One wall or gate;*
- One narrow vertical or spread obstacle with frontal width between 2m50 to 3m00;*
- Minimum one triple and one double combination (three doubles are not allowed);*
- The triple combination must have at least one oxer minimum 1m50 height and 1m50 spread, and at least one one-stride distance either from A to B or from B to C;*
- Approximately 50% of the efforts must be vertical obstacles and 50% must be spread obstacles (e.g. oxer, triple bar, Swedish oxer, narrow oxer etc.). Nevertheless, no more than 55% of the efforts may be vertical and no more than 60% of the efforts may be spread obstacles, including the water jump if there is one;*
- Two verticals (other than the wall) must have a height of 1m60;*
- At least two spread obstacles with minimum height of 1m50 and minimum spread of 1m60;*
- Two liverpool obstacles, one vertical and one spread. If the course includes a water jump, a minimum of one liverpool will be allowed;*
- Bend or straight line of up to six strides between two single obstacles;*
- Depth of cups: minimum 50% of cups must have a depth of 18mm; depth of cups maximum 20mm if poles are 350-400cm long;*
- Minimum length of course 400 meters with a minimum speed of 375m/min;*
- The course will include minimum 12 and maximum 14 obstacles.*

*The Foreign Judge is responsible for ensuring that the course is built to the required dimensions and must confirm to the FEI through the Foreign Judge Report whether or not the course requirements have been met and must upload/sent the course plan including all heights and dimensions following the Event.*

**2<sup>nd</sup> WEEK: 02 – 07 FEBRUARY 2021**

**CSI3\*/CSI1\*/CSIYH1\***

**FIRST DAY : Tuesday**

**DATE: 02/02/2021**

**COMPETITION No: YH-10**

**Time: 09:00H**

**Young horses 5 years old**

238.1.1 (Table A not against the clock)

Jump-off (if any)

No

Speed/Fixed time

350m/min.

Height of obstacles:

1,10m

Number of horses per athlete

3

Number of Starters:

\*100 (if more than 100 take part then please refer to Section XIV point 9)

Total prize money:

700€

Chart to be used:

1 (25% to winner)

Please specify prize money amount for each athlete placed 13<sup>th</sup> and beyond: 5€

**COMPETITION No: YH-11**

**Time: following**

**Young horses 6 years old**

238.2.1 (Table A against the clock)

Jump-off (if any)

No

Speed/Fixed time

350m/min.

Height of obstacles:

1,20/1,25m

Number of horses per athlete

3

Number of Starters:

\*100 (if more than 100 take part then please refer to Section XIV point 9)

Total prize money:

1.000€

Chart to be used:

1 (25% to winner)

Please specify prize money amount for each athlete placed 13<sup>th</sup> and beyond: 5€

**COMPETITION No: YH-12**

**Time: following**

**Young horses 7 years old**

238.2.1 (Table A against the clock)

Jump-off (if any)

No

Speed/Fixed time

350m/min.

Height of obstacles:

1,30/1,35m

Number of horses per athlete

3

Number of Starters:

\*100 (if more than 100 take part then please refer to Section XIV point 9)

Total prize money:

1.700€

Chart to be used:

1 (25% to winner)

Please specify prize money amount for each athlete placed 13<sup>th</sup> and beyond: 5€

**SECOND DAY : Wednesday**

**DATE : 03/02/2021**

**COMPETITION No: YH-13**

**Time: 09:00H**

**Young horses 5 years old**

238.1.1 (Table A not against the clock)

Jump-off (if any)

No

Speed/Fixed time

350m/min.

Height of obstacles:

1,10/1,15m

Number of horses per athlete

3

Number of Starters:

\*100 (if more than 100 take part then please refer to Section XIV point 9)

Total prize money:

700€

Chart to be used:

1 (25% to winner)

Please specify prize money amount for each athlete placed 13<sup>th</sup> and beyond: 5€

**COMPETITION No: YH-14**

**Time: following**

**Young horses 6 years old**

238.2.2 (Table A against the clock with jump off)

Jump-off (if any)

1 against the clock

Speed/Fixed time

350m/min.

Height of obstacles:

1,25/1,30m

Number of horses per athlete

3

Number of Starters:

\*100 (if more than 100 take part then please refer to Section XIV point 9)

Total prize money:

2.300€

Chart to be used:

1 (25% to winner)

Please specify prize money amount for each athlete placed 13<sup>th</sup> and beyond: 5€

**COMPETITION No: YH-15**

**Time: following**

**Young horses 7 years old**

238.2.2 (Table A against the clock with jump off)

Jump-off (if any)

1 against the clock

Speed/Fixed time

350m/min.

Height of obstacles:

1,30/1,35m

Number of horses per athlete

3

Number of Starters:

\*100 (if more than 100 take part then please refer to Section XIV point 9)

Total prize money:

2.700€

Chart to be used:

1 (25% to winner)

Please specify prize money amount for each athlete placed 13<sup>th</sup> and beyond: 5€

**THIRD DAY : Thursday**

**DATE : 04/02/2021**

**COMPETITION No: YH-16**

**Time: 09:00H**

<b>Young horses 5 years old</b>	238.1.1 (Table A not against the clock)
Jump-off (if any)	No
Speed/Fixed time	350m/min.
Height of obstacles:	1,10/1,15m
Number of horses per athlete	3
Number of Starters:	*100 (if more than 100 take part then please refer to Section XIV point 9)
Total prize money:	700€
Chart to be used:	1 (25% to winner)
Please specify prize money amount for each athlete placed 13 <sup>th</sup> and beyond: 5€	

**COMPETITION No YH-17**

**Time: following**

<b>Young Horses 6 years old:</b>	274.2.5 (Two phases, 1 <sup>st</sup> not against the clock, 2 <sup>nd</sup> against the clock)
Jump-off (if any)	No
Speed/Fixed time	350m/min.
Height of obstacles:	1,20/1,25m
Number of horses per athlete	3
Maximum number of Starters:	*100 (if more than 100 take part then please refer to Section XIV point 9)
Total prize money	1.000€
Chart to be used:	1 (25% to winner)
Please specify prize money amount for athlete placed beyond 13 <sup>th</sup> : 5€	

**COMPETITION No: YH-18**

**Time: following**

<b>Young horses 7 years old</b>	274.2.5 (Two phases, 1 <sup>st</sup> not against the clock, 2 <sup>nd</sup> against the clock)
Jump-off (if any)	No
Speed/Fixed time	350m/min.
Height of obstacles:	1,30/1,35m
Number of horses per athlete	3
Number of Starters:	*100 (if more than 100 take part then please refer to Section XIV point 9)
Total prize money:	1.700€
Chart to be used:	1 (25% to winner)
Please specify prize money amount for each athlete placed 13 <sup>th</sup> and beyond: 10€	

**COMPETITION No A-16 CSI 3\***

**Time: following**

<b>Medium Tour:</b>	238.1.1 (Table A not against the clock)
Jump-off (if any)	No
Speed/Fixed time	375m/min.
Height of obstacles:	1,30m
Number of horses per athlete	3
Maximum number of Starters:	*100 (if more than 100 take part then please refer to Section XIV point 9)
Total prize money	2.000€
Chart to be used:	1 (25% to winner)
Please specify prize money amount for athlete placed beyond 13 <sup>th</sup> : 10€	

**COMPETITION No A-17 CSI 3\***

**Time: following**

<b>Big Tour:</b>	238.2.1 (Table A against the clock)
Jump-off (if any)	No
Speed/Fixed time	375m/min.
Height of obstacles:	1,40m
Number of horses per athlete	2
Maximum number of Starters:	*100 (if more than 100 take part then please refer to Section XIV point 9)
Total prize money	4.000€
Chart to be used:	1 (25% to winner)
Please specify prize money amount for athlete placed beyond 13 <sup>th</sup> : 10€	

**COMPETITION No A-18 CSI 3\***

**Time: following**

**Qualifier for the G.P. and the best 100 qualify for Competition A-22**  
**This Competition counts for the FEI Longines Ranking Group D**

<b>Big Tour:</b>	238.2.1 (Table A against the clock)
Jump-off (if any)	No
Speed/Fixed time	375m/min.
Height of obstacles:	1,45m
Number of horses per athlete	1
Maximum number of Starters:	*100 (if more than 100 take part then please refer to Section XIV point 9)
Total prize money	<b>25.700€</b>
Chart to be used:	1 (25% to winner)
Please specify prize money amount for athlete placed beyond 13 <sup>th</sup> : 50€	

**FOURTH DAY : Friday**

**DATE: 05/02/2021**

**COMPETITION No B-04 CSI 1 \***

**Time: following**

<b>Small Tour :</b>	238.2.1 (Table A against the clock)
Jump-off (if any)	No
Speed/Fixed time	350m/min.
Height of obstacles:	1,10m
Number of horses per athlete	3
Maximum number of Starters:	*100 (if more than 100 take part then please refer to Section XIV point 9)
Total prize money	600€
Chart to be used:	1 (25% to winner)
Please specify prize money amount for athlete placed beyond 13 <sup>th</sup> : 5€	

**COMPETITION No A-19 CSI 3 \***

**Time: following**

<b>Small Tour:</b>	238.2.1 (Table A against the clock)
Jump-off (if any)	No
Speed/Fixed time	350m/min.
Height of obstacles:	1,20m
Number of horses per athlete	3
Maximum number of Starters:	*100 (if more than 100 take part then please refer to Section XIV point 9)
Total prize money	1.000€
Chart to be used:	1 (25% to winner)
Please specify prize money amount for athlete placed beyond 13 <sup>th</sup> : 5€	

**COMPETITION No A-20 CSI 3 \***

**Time: following**

<b>Medium Tour:</b>	274.1.5.3 (Two phases, both against the clock - Table A)
Jump-off (if any)	No
Speed/Fixed time	375m/min.
Height of obstacles:	1,35m
Number of horses per athlete	3
Maximum number of Starters:	*100 (if more than 100 take part then please refer to Section XIV point 9)
Total prize money	2.500€
Chart to be used:	1 (25% to winner)
Please specify prize money amount for athlete placed beyond 13 <sup>th</sup> : 10€	

**COMPETITION No A-21 CSI 3\***

**Time: following**

<b>Big Tour:</b>	274.2.5 (Two phases, 1 <sup>st</sup> not against the clock, 2 <sup>nd</sup> against the clock)
Jump-off (if any)	No
Speed/Fixed time	375m/min.
Height of obstacles:	1,40m
Number of horses per athlete	2
Maximum number of Starters:	*100 (if more than 100 take part then please refer to Section XIV point 9)
Total prize money	4.000€
Chart to be used:	1 (25% to winner)
Please specify prize money amount for athlete placed beyond 13 <sup>th</sup> : 20€	

**COMPETITION No A-22 CSI 3\***

**Time: following**

**Qualifier for the G.P.**

**This Competition counts for the FEI Longines Ranking Group D**

**Open to 100 riders. The best 100 riders of Competition A-18**

**Should the overall number of riders entered be equal to/less than 100 no qualification system will be applied for the participation.**

**Qualifier for competition A-30 Grand Prix. The best riders, not already qualified in competition A-18, to reach the number of 60 starters (including automatically qualify for competition A-30 (should the overall number of riders entered in competition A-30 be equal to/less than 60 no qualification system will be applied for the participation in class A-30)**

<b>Big Tour:</b>	238.2.2 (Table A against the clock with Jump-off)
Jump-off (if any)	1 against the clock
Speed/Fixed time	375m/min.
Height of obstacles:	1,45m
Number of horses per athlete	1
Maximum number of Starters:	100
Total prize money	<b>25.700€</b>
Chart to be used:	1 (25% to winner)
Please specify prize money amount for athlete placed beyond 13 <sup>th</sup> : 50€	

**FIFTH DAY : Saturday**

**DATE: 06/02/2021**

**COMPETITION No B-05 CSI 1\***

**Time: 09:00H**

<b>Small Tour:</b>	274.2.5 (Two phases, 1 <sup>st</sup> not against the clock, 2 <sup>nd</sup> against the clock)
Jump-off (if any)	No
Speed/Fixed time	350m/min.
Height of obstacles:	1,10m

Number of horses per athlete	3
Maximum number of Starters:	*100 (if more than 100 take part then please refer to Section XIV point 9)
Total prize money	600€
Chart to be used:	1 (25% to winner)
Please specify prize money amount for athlete placed beyond 13 <sup>th</sup> : 5€	

**COMPETITION No A-23 CSI 3\***

**Time: following**

<b>Small Tour:</b>	274.1.5.3 (Two phases, both against the clock - Table A)
Jump-off (if any)	No
Speed/Fixed time	350m/min.
Height of obstacles:	1,20m
Number of horses per athlete	3
Maximum number of Starters:	*100 (if more than 100 take part then please refer to Section XIV point 9)
Total prize money	1.000€
Chart to be used:	1 (25% to winner)
Please specify prize money amount for athlete placed beyond 13 <sup>th</sup> : 5€	

**COMPETITION No A-24 CSI 3\***

**Time: following**

<b>Medium Tour:</b>	274.2.5 (Two phases, 1 <sup>st</sup> not against the clock, 2 <sup>nd</sup> against the clock)
Jump-off (if any)	No
Speed/Fixed time	375m/min.
Height of obstacles:	1,30m
Number of horses per athlete	3
Maximum number of Starters:	*100 (if more than 100 take part then please refer to Section XIV point 9)
Total prize money	2.000€
Chart to be used:	1 (25% to winner)
Please specify prize money amount for athlete placed beyond 13 <sup>th</sup> : 10€	

**COMPETITION No A-25 CSI 3\***

**Time: following**

<b>Medium Tour:</b>	238.2.1 (Table A against the clock)
Jump-off (if any)	No
Speed/Fixed time	375m/min.
Height of obstacles:	1,35m
Number of horses per athlete	3
Maximum number of Starters:	*100 (if more than 100 take part then please refer to Section XIV point 9)
Total prize money	2.500€
Chart to be used:	1 (25% to winner)
Please specify prize money amount for athlete placed beyond 13 <sup>th</sup> : 10€	



**COMPETITION No A-26 CSI 3\***

**Time: following**

<b>Big Tour:</b>	238.2.2 (Table A against the clock with jump off)
Jump-off (if any)	1 against the clock
Speed/Fixed time	375m/min.
Height of obstacles:	1,40m
Number of horses per athlete	1
Maximum number of Starters:	*100 (if more than 100 take part then please refer to Section XIV point 9)
Total prize money	8.000€
Chart to be used:	1 (25% to winner)
Please specify prize money amount for athlete placed beyond 13 <sup>th</sup> : 20€	

**SIXTH DAY : Sunday**

**DATE: 07/02/2021**

**COMPETITION No B-06 CSI 1\***

**Time: 09:00H**

<b>Small Tour:</b>	269.1,2,3,5 (accumulator competition)
Jump-off (if any)	No
Speed/Fixed time	350m/min.
Height of obstacles:	1,10/1,15m
Number of horses per athlete	3
Maximum number of Starters:	*100 (if more than 100 take part then please refer to Section XIV point 9)
Total prize money	600€
Chart to be used:	1 (25% to winner)
Please specify prize money amount for athlete placed beyond 13 <sup>th</sup> : 5€	

**COMPETITION No A-27 CSI 3\***

**Time: following**

<b>Small Tour:</b>	238.2.2 (Table A against the clock with Jump-off)
Jump-off (if any)	1 against the clock
Speed/Fixed time	350m/min.
Height of obstacles:	1,20m
Number of horses per athlete	3
Maximum number of Starters:	*100 (if more than 100 take part then please refer to Section XIV point 9)
Total prize money	1.000€
Chart to be used:	1 (25% to winner)
Please specify prize money amount for athlete placed beyond 13 <sup>th</sup> : 5€	

**COMPETITION No A-28 CSI 3\***

**Time: following**

<b>Medium Tour:</b>	238.2.1 (Table A against the clock)
Jump-off (if any)	No
Speed/Fixed time	375m/min.
Height of obstacles:	1,30m
Number of horses per athlete	3
Maximum number of Starters:	*100 (if more than 100 take part then please refer to Section XIV point 9)
Total prize money	2.000€
Chart to be used:	1 (25% to winner)
Please specify prize money amount for athlete placed beyond 13 <sup>th</sup> : 10€	

**COMPETITION No A-29 CSI 3\***

**Time: following**

**QUALIFIER FOR CH-EU JUNIOR 2021**

<b>Medium Tour :</b>	238.2.2 (Table A against the clock with Jump-off)
Jump-off (if any)	1 against the clock
Speed/Fixed time	375m/min.
Height of obstacles:	1,35m
Number of horses per athlete	3
Maximum number of Starters:	*100 (if more than 100 take part then please refer to Section XIV point 9)
Total prize money	2.500€
Chart to be used:	1 (25% to winner)
Please specify prize money amount for athlete placed beyond 13 <sup>th</sup> : 10€	

**COMPETITION No A-30 CSI 3\***

**Time: following**

This Competition counts for the FEI Longines Ranking Group C

**Big Tour: Grand Prix** 238.2.2 (Table A against the clock with jump off)  
 + FEI Olympic Regulations Art. 632.6.1 / JRs Annex VIII, Art. 4.11 / JRs Annex VIII, Art. 3.11

Jump-off (if any)	1 against the clock
Speed/Fixed time	375m/min.
Height of obstacles:	1,50m (2 verticals of 1m60 compulsory)
Number of horses per athlete	1
Maximum number of Starters:	60

This GP is open to 60 riders of the CSI qualified under the following conditions:

The following Athletes (not Athlete/Horse combinations) are automatically qualified for the Grand Prix at CSI Events, if present:

- 261.4.2.1. The winner of that Event's Grand Prix the previous year;
- 261.4.2.2. The current National Jumping Champion of the host country;
- 261.4.2.3. The individual Jumping medal winners of the last Olympic and Pan-American Games, the last World and Continental Championships and the winner of the last FEI World Cup™ Jumping Final.

Athletes qualified for the Grand Prix :

The best 40 Athletes in competition n° **A-18**

The best 17 Athletes in competition n° **A-22**, not qualified in competition **A-18** to reach a total of 60 starters (including prequalified riders).

**Qualified athletes who decide not to start until 4 hours before the start of the competition, will be replaced with the following placed athletes in the class in which they got qualified**

**All athletes qualified for the Grand Prix, including those automatically qualified must complete, with their Grand Prix horse, the initial round of at least one FEI competition among those listed in JRs Art. 261.4.4 prior to the Grand Prix.**

Total prize money **51.700€**  
Chart to be used: 1 (25% to winner)  
Please specify prize money amount for athlete placed beyond 13<sup>th</sup> : 50€

**Qualifier for Tokyo Olympic Games in 2021 / CH-EU-S 2021\* / CH-M-S 2022 (Certificates of Capability)**

*\*Final confirmation on the holding of these Championships to be provided in early 2021.*

**Counting for Tokyo Olympic Games 2021 / CH-EU-S 2021**

*This competition will count as a competition where athletes and horses can achieve the Minimum Eligibility Requirements (MER) providing the course meets the following specifications: consist of at least 12 obstacles which may vary in height between 1.40m and 1.60m. The spread obstacles must have spreads of between 1.50m to 2.00m (2.20m for the triple bar). At least two vertical obstacles must be provided with a minimum height of 1.60m.*

**Counting for CH-M-S 2022**

*This competition will count as a competition where athletes and horses can achieve the Minimum Eligibility Requirements (MER) providing the course meets the following specifications: consist of at least 12 obstacles which may vary in height between 1.40m and 1.60m. The spread obstacles must have spreads of between 1.50m to 2.00m (2.20m for the triple bar). At least two vertical obstacles must be provided with a minimum height of 1.60m. In addition to these requirements the competition must comply with the following **mandatory requirements** to count for the CH-M-S 2022:*

- *The first obstacle may be a vertical minimum height 1m45 or an oxer minimum height 1m40 for the front pole and 1m45 for the back pole;*
- *One set of planks on flat cups;*
- *Triple bar minimum 1m80 spread and 1m50 height;*
- *One wall or gate;*
- *One narrow vertical or spread obstacle with frontal width between 2m50 to 3m00;*
- *Minimum one triple and one double combination (three doubles are not allowed);*
- *The triple combination must have at least one oxer minimum 1m50 height and 1m50 spread, and at least one one-stride distance either from A to B or from B to C;*
- *Approximately 50% of the efforts must be vertical obstacles and 50% must be spread obstacles (e.g. oxer, triple bar, Swedish oxer, narrow oxer etc.). Nevertheless, no more than 55% of the efforts may be vertical and no more than 60% of the efforts may be spread obstacles, including the water jump if there is one;*
- *Two verticals (other than the wall) must have a height of 1m60;*
- *At least two spread obstacles with minimum height of 1m50 and minimum spread of 1m60;*
- *Two liverpool obstacles, one vertical and one spread. If the course includes a water jump, a minimum of one liverpool will be allowed;*
- *Bend or straight line of up to six strides between two single obstacles;*
- *Depth of cups: minimum 50% of cups must have a depth of 18mm; depth of cups maximum 20mm if poles are 350-400cm long;*
- *Minimum length of course 400 meters with a minimum speed of 375m/min;*
- *The course will include minimum 12 and maximum 14 obstacles.*

*The Foreign Judge is responsible for ensuring that the course is built to the required dimensions and must confirm to the FEI through the Foreign Judge Report whether or not the course requirements have been met and must upload/sent the course plan including all heights and dimensions following the Event.*

**3<sup>rd</sup> WEEK: 09 – 14 FEBRUARY 2021**

**CSI3\*/CSI1\*/CSIYH1\***

**FIRST DAY : Tuesday**

**DATE: 09/02/2021**

**COMPETITION No: YH-19**

**Time: 09:00H**

**Young horses 5 years old**

238.1.1 (Table A not against the clock)

Jump-off (if any)

No

Speed/Fixed time

350m/min.

Height of obstacles:

1,10/1,15m

Number of horses per athlete

3

Number of Starters:

\*100 (if more than 100 take part then please refer to Section XIV point 9)

Total prize money:

700€

Chart to be used:

1 (25% to winner)

Please specify prize money amount for each athlete placed 13<sup>th</sup> and beyond: 5€

**COMPETITION No: YH-20**

**Time: following**

**Young horses 6 years old**

238.2.1 (Table A against the clock)

Jump-off (if any)

No

Speed/Fixed time

350m/min.

Height of obstacles:

1,20/1,25m

Number of horses per athlete

3

Number of Starters:

\*100 (if more than 100 take part then please refer to Section XIV point 9)

Total prize money:

1.000€

Chart to be used:

1 (25% to winner)

Please specify prize money amount for each athlete placed 13<sup>th</sup> and beyond: 5€

**COMPETITION No: YH-21**

**Time: following**

**Young horses 7 years old**

238.2.1 (Table A against the clock)

Jump-off (if any)

No

Speed/Fixed time

350m/min.

Height of obstacles:

1,30/1,35m

Number of horses per athlete

3

Number of Starters:

\*100 (if more than 100 take part then please refer to Section XIV point 9)

Total prize money:

1.700€

Chart to be used:

1 (25% to winner)

Please specify prize money amount for each athlete placed 13<sup>th</sup> and beyond: 5€

**SECOND DAY : Wednesday**

**DATE : 10/02/2021**

**COMPETITION No: YH-22**

**Time: 09:00H**

**Young horses 5 years old**

238.1.1 (Table A not against the clock)

Jump-off (if any)

No

Speed/Fixed time

350m/min.

Height of obstacles:

1,10/1,15m

Number of horses per athlete

3

Number of Starters:

\*100 (if more than 100 take part then please refer to Section XIV point 9)

Total prize money:

700€

Chart to be used:

1 (25% to winner)

Please specify prize money amount for each athlete placed 13<sup>th</sup> and beyond: 5€

**COMPETITION No: YH-23**

**Time: following**

**Young horses 6 years old**

238.2.2 (Table A against the clock with jump off)

Jump-off (if any)

1 against the clock

Speed/Fixed time

350m/min.

Height of obstacles:

1,20/1,25m

Number of horses per athlete

3

Number of Starters:

\*100 (if more than 100 take part then please refer to Section XIV point 9)

Total prize money:

2.300€

Chart to be used:

1 (25% to winner)

Please specify prize money amount for each athlete placed 13<sup>th</sup> and beyond: 5€

**COMPETITION No: YH-24**

**Time: following**

**Young horses 7 years old**

238.2.2 (Table A against the clock with jump off)

Jump-off (if any)

1 against the clock

Speed/Fixed time

350m/min.

Height of obstacles:

1,30/1,35m

Number of horses per athlete

3

Number of Starters:

\*100 (if more than 100 take part then please refer to Section XIV point 9)

Total prize money:

2.700€

Chart to be used:

1 (25% to winner)

Please specify prize money amount for each athlete placed 13<sup>th</sup> and beyond: 5€

**THIRD DAY : Thursday**

**DATE : 11/02/2021**

**COMPETITION No: YH-25**

**Time: 09:00H**

<b>Young horses 5 years old</b>	238.1.1 (Table A not against the clock)
Jump-off (if any)	No
Speed/Fixed time	350m/min.
Height of obstacles:	1,10/1,15m
Number of horses per athlete	3
Number of Starters:	*100 (if more than 100 take part then please refer to Section XIV point 9)
Total prize money:	700€
Chart to be used:	1 (25% to winner)
Please specify prize money amount for each athlete placed 13 <sup>th</sup> and beyond: 5€	

**COMPETITION No YH-26**

**Time: following**

<b>Young Horses 6 years old:</b>	274.2.5 (Two phases, 1 <sup>st</sup> not against the clock, 2 <sup>nd</sup> against the clock)
Jump-off (if any)	No
Speed/Fixed time	350m/min.
Height of obstacles:	1,20/1,25m
Number of horses per athlete	3
Maximum number of Starters:	*100 (if more than 100 take part then please refer to Section XIV point 9)
Total prize money	1.000€
Chart to be used:	1 (25% to winner)
Please specify prize money amount for athlete placed beyond 13 <sup>th</sup> : 5€	

**COMPETITION No: YH-27**

**Time: following**

<b>Young horses 7 years old</b>	274.2.5 (Two phases, 1 <sup>st</sup> not against the clock, 2 <sup>nd</sup> against the clock)
Jump-off (if any)	No
Speed/Fixed time	350m/min.
Height of obstacles:	1,30/1,35m
Number of horses per athlete	3
Number of Starters:	*100 (if more than 100 take part then please refer to Section XIV point 9)
Total prize money:	1.700€
Chart to be used:	1 (25% to winner)
Please specify prize money amount for each athlete placed 13 <sup>th</sup> and beyond: 5€	

**COMPETITION No A-31 CSI 3\***

**Time: following**

<b>Medium Tour:</b>	238.2.1 (Table A against the clock)
Jump-off (if any)	No
Speed/Fixed time	375m/min.
Height of obstacles:	1,30m
Number of horses per athlete	3
Maximum number of Starters:	*100 (if more than 100 take part then please refer to Section XIV point 9)
Total prize money	2.000€
Chart to be used:	1 (25% to winner)
Please specify prize money amount for athlete placed beyond 13 <sup>th</sup> : 10€	

**COMPETITION No A-32 CSI 3\***

**Time: following**

<b>Big Tour:</b>	238.2.1 (Table A against the clock)
Jump-off (if any)	No
Speed/Fixed time	375m/min.
Height of obstacles:	1,40m
Number of horses per athlete	2
Maximum number of Starters:	*100 (if more than 100 take part then please refer to Section XIV point 9)
Total prize money	4.000€
Chart to be used:	1 (25% to winner)
Please specify prize money amount for athlete placed beyond 13 <sup>th</sup> : 10€	

**COMPETITION No A-33 CSI 3\***

**Time: following**

**Qualifier for the G.P.**

**This Competition counts for the FEI Longines Ranking Group D**

**Qualifier for the G.P. and qualified the best 100 for Competition A-37**

<b>Big Tour:</b>	238.2.1 (Table A against the clock)
Jump-off (if any)	No
Speed/Fixed time	375m/min.
Height of obstacles:	1,45m
Number of horses per athlete	1
Maximum number of Starters:	*100 (if more than 100 take part then please refer to Section XIV point 9)
Total prize money	<b>25.700€</b>
Chart to be used:	1 (25% to winner)
Please specify prize money amount for athlete placed beyond 13 <sup>th</sup> : 50€	

**FOURTH DAY : Friday**

**DATE: 12/02/2021**

**COMPETITION No B-07 CSI 1 \***

**Time: following**

**Small Tour :** 238.2.1 (Table A against the clock)  
Jump-off (if any) No  
Speed/Fixed time 350m/min.  
Height of obstacles: 1,10m  
Number of horses per athlete 3  
Maximum number of Starters: \*100 (if more than 100 take part then please refer to Section XIV point 9)  
Total prize money 600€  
Chart to be used: 1 (25% to winner)  
Please specify prize money amount for athlete placed beyond 13<sup>th</sup> : 5€

**COMPETITION No A-34 CSI 3 \***

**Time: following**

**Small Tour:** 238.2.1 (Table A against the clock)  
Jump-off (if any) No  
Speed/Fixed time 350m/min.  
Height of obstacles: 1,20m  
Number of horses per athlete 3  
Maximum number of Starters: \*100 (if more than 100 take part then please refer to Section XIV point 9)  
Total prize money 1.000€  
Chart to be used: 1 (25% to winner)  
Please specify prize money amount for athlete placed beyond 13<sup>th</sup> : 5€

**COMPETITION No A-35 CSI 3 \***

**Time: following**

**Medium Tour:** 274.1.5.3 (Two phases, both against the clock - Table A)  
Jump-off (if any) No  
Speed/Fixed time 375m/min.  
Height of obstacles: 1,35m  
Number of horses per athlete 3  
Maximum number of Starters: \*100 (if more than 100 take part then please refer to Section XIV point 9)  
Total prize money 2.500€  
Chart to be used: 1 (25% to winner)  
Please specify prize money amount for athlete placed beyond 13<sup>th</sup> : 10€



**COMPETITION No A-36 CSI 3\***

**Time: following**

<b>Big Tour:</b>	238.2.1 (Table A against the clock)
Jump-off (if any)	No
Speed/Fixed time	375m/min.
Height of obstacles:	1,40m
Number of horses per athlete	2
Maximum number of Starters:	*100 (if more than 100 take part then please refer to Section XIV point 9)
Total prize money	4.000€
Chart to be used:	1 (25% to winner)
Please specify prize money amount for athlete placed beyond 13 <sup>th</sup> : 20€	

**COMPETITION No A-37 CSI 3\***

**Time: following**

**Qualifier for the G.P.**

**This Competition counts for the FEI Longines Ranking Group D**

**Open to 100 riders. The best 100 riders of Competition A-33**

**Should the overall number of riders entered be equal to/less than 100 no qualification system will be applied for the participation.**

**Qualifier for competition A-46 Grand Prix. The best riders, not already qualified in competition A-33, to reach the number of 60 starters (including automatically qualify for competition A-30 (should the overall number of riders entered in competition A-46 be equal to/less than 60 no qualification system will be applied for the participation in class A-46)**

<b>Big Tour:</b>	238.2.2 (Table A against the clock with jump off)
Jump-off (if any)	1 against the clock
Speed/Fixed time	375m/min.
Height of obstacles:	1,45m
Number of horses per athlete	1
Maximum number of Starters:	100
Total prize money	<b>25.700€</b>
Chart to be used:	1 (25% to winner)
Please specify prize money amount for athlete placed beyond 13 <sup>th</sup> : 50€	

**FIFTH DAY : Saturday**

**DATE: 13/02/2021**

**COMPETITION No B-08 CSI 1\***

**Time: 09:00H**

<b>Small Tour:</b>	274.2.5 (Two phases, 1 <sup>st</sup> not against the clock, 2 <sup>nd</sup> against the clock)
Jump-off (if any)	No
Speed/Fixed time	350m/min.
Height of obstacles:	1,10m
Number of horses per athlete	3
Maximum number of Starters:	*100 (if more than 100 take part then please refer to Section

	XIV point 9)
Total prize money	600€
Chart to be used:	1 (25% to winner)
Please specify prize money amount for athlete placed beyond 13 <sup>th</sup> : 5€	

**COMPETITION No A-38 CSI 3\***

**Time: following**

<b>Small Tour:</b>	274.1.5.3 (Two phases, both against the clock - Table A)
Jump-off (if any)	No
Speed/Fixed time	350m/min.
Height of obstacles:	1,20m
Number of horses per athlete	3
Maximum number of Starters:	*100 (if more than 100 take part then please refer to Section XIV point 9)
Total prize money	1.000€
Chart to be used:	1 (25% to winner)
Please specify prize money amount for athlete placed beyond 13 <sup>th</sup> : 5€	

**COMPETITION No A-39 CSI 3\***

**Time: following**

<b>Medium Tour:</b>	274.2.5 (Two phases, 1 <sup>st</sup> not against the clock, 2 <sup>nd</sup> against the clock)
Jump-off (if any)	No
Speed/Fixed time	375m/min.
Height of obstacles:	1,30m
Number of horses per athlete	3
Maximum number of Starters:	*100 (if more than 100 take part then please refer to Section XIV point 9)
Total prize money	2.000€
Chart to be used:	1 (25% to winner)
Please specify prize money amount for athlete placed beyond 13 <sup>th</sup> : 10€	

**COMPETITION No A-40 CSI 3\***

**Time: following**

<b>Medium Tour :</b>	269.1,2,3,5 (Accumulator Competition)
Jump-off (if any)	No
Speed/Fixed time	375m/min.
Height of obstacles:	1,35m
Number of horses per athlete	3
Maximum number of Starters:	*100 (if more than 100 take part then please refer to Section XIV point 9)
Total prize money	2.500€
Chart to be used:	1 (25% to winner)
Please specify prize money amount for athlete placed beyond 13 <sup>th</sup> : 10€	

**COMPETITION No A-41 CSI 3\***

**Time: following**

<b>Big Tour:</b>	238.2.2 (Table A against the clock with jump off)
Jump-off (if any)	1 against the clock
Speed/Fixed time	375m/min.
Height of obstacles:	1,40m
Number of horses per athlete	1
Maximum number of Starters:	*100 (if more than 100 take part then please refer to Section XIV point 9)
Total prize money	8.000€
Chart to be used:	1 (25% to winner)
Please specify prize money amount for athlete placed beyond 13 <sup>th</sup> : 20€	

**COMPETITION No A-42 CSI 3\***

**Time: following**

<b>Big Tour:</b>	238.2.1 (Table A against the clock)
Jump-off (if any)	No
Speed/Fixed time	375m/min.
Height of obstacles:	1,40m
Number of horses per athlete	1
Maximum number of Starters:	*100 (if more than 100 take part then please refer to Section XIV point 9)
Total prize money	4.000€
Chart to be used:	1 (25% to winner)
Please specify prize money amount for athlete placed beyond 13 <sup>th</sup> : 20€	

**SIXTH DAY : Sunday**

**DATE: 14/02/2021**

**COMPETITION No B-09 CSI 1\***

**Time: 09:00H**

<b>Small Tour:</b>	238.2.1 (Table A against the clock)
Jump-off (if any)	No
Speed/Fixed time	350m/min.
Height of obstacles:	1,10/1,15m
Number of horses per athlete	3
Maximum number of Starters:	*100 (if more than 100 take part then please refer to Section XIV point 9)
Total prize money	600€
Chart to be used:	1 (25% to winner)
Please specify prize money amount for athlete placed beyond 13 <sup>th</sup> : 5€	

**COMPETITION No A-43 CSI 3\***

**Time: following**

<b>Small Tour:</b>	238.2.1 (Table A against the clock)
Jump-off (if any)	No
Speed/Fixed time	350m/min.

**FEI APPROVED SCHEDULE**  
**Vilamoura 25 January – 07 March 2021**



Height of obstacles:	1,20m
Number of horses per athlete	3
Maximum number of Starters:	*100 (if more than 100 take part then please refer to Section XIV point 9)
Total prize money	1.000€
Chart to be used:	1 (25% to winner)
Please specify prize money amount for athlete placed beyond 13 <sup>th</sup> : 5€	

**COMPETITION No A-44 CSI 3\***

**Time: following**

<b>Medium Tour:</b>	269.1,2,3,5 (Accumulator Competition)
Jump-off (if any)	No
Speed/Fixed time	375m/min.
Height of obstacles:	1,30m
Number of horses per athlete	3
Maximum number of Starters:	*100 (if more than 100 take part then please refer to Section XIV point 9)
Total prize money	2.000€
Chart to be used:	1 (25% to winner)
Please specify prize money amount for athlete placed beyond 13 <sup>th</sup> : 10€	

**COMPETITION No A-45 CSI 3\***

**Time: following**

**QUALIFIER FOR CH-EU JUNIOR 2021**

<b>Medium Tour :</b>	238.2.2 (Table A against the clock with Jump-off)
Jump-off (if any)	1 against the clock
Speed/Fixed time	375m/min.
Height of obstacles:	1,35m
Number of horses per athlete	3
Maximum number of Starters:	*100 (if more than 100 take part then please refer to Section XIV point 9)
Total prize money	2.500€
Chart to be used:	1 (25% to winner)
Please specify prize money amount for athlete placed beyond 13 <sup>th</sup> : 10€	

**COMPETITION No A-46 CSI 3\***

**Time: following**

This Competition counts for the FEI Longines Ranking Group D

**Big Tour: Grand Prix** 238.2.2 (Table A against the clock with jump off)  
 + FEI Olympic Regulations Art. 632.6.1 / JRs Annex VIII, Art. 4.11 / JRs Annex VIII, Art. 3.11

Jump-off (if any)	1 against the clock
Speed/Fixed time	375m/min.
Height of obstacles:	1,50m (2 verticals of 1m60 compulsory)
Number of horses per athlete	1
Maximum number of Starters:	60
This GP is open to 60 riders of the CSI qualified under the following conditions:	

The following Athletes (not Athlete/Horse combinations) are automatically qualified for the Grand Prix at CSI Events, if present:

- 261.4.2.1. The winner of that Event's Grand Prix the previous year;
- 261.4.2.2. The current National Jumping Champion of the host country;
- 261.4.2.3. The individual Jumping medal winners of the last Olympic and Pan-American Games, the last World and Continental Championships and the winner of the last FEI World Cup™ Jumping Final.

Athletes qualified for the Grand Prix :

The best 40 Athletes in competition n° **A-33**

The best 20 Athletes in competition n° **A-37**, not qualified in competition **A-33** to reach a total of 60 starters (including prequalified riders).

**Qualified athletes who decide not to start until 4 hours before the start of the competition, will be replaced with the following placed athletes in the class in which they got qualified**

**All athletes qualified for the Grand Prix, including those automatically qualified must complete, with their Grand Prix horse, the initial round of at least one FEI competition among those listed in JRs Art. 261.4.4 prior to the Grand Prix.**

Total prize money **51.700€**

Chart to be used: 1 (25% to winner)

Please specify prize money amount for athlete placed beyond 13<sup>th</sup> : 50€

#### **Counting for Tokyo Olympic Games 2021 / CH-EU-S 2021**

*This competition will count as a competition where athletes and horses can achieve the Minimum Eligibility Requirements (MER) providing the course meets the following specifications: consist of at least 12 obstacles which may vary in height between 1.40m and 1.60m. The spread obstacles must have spreads of between 1.50m to 2.00m (2.20m for the triple bar). At least two vertical obstacles must be provided with a minimum height of 1.60m.*

#### **Counting for CH-M-S 2022**

*This competition will count as a competition where athletes and horses can achieve the Minimum Eligibility Requirements (MER) providing the course meets the following specifications: consist of at least 12 obstacles which may vary in height between 1.40m and 1.60m. The spread obstacles must have spreads of between 1.50m to 2.00m (2.20m for the triple bar). At least two vertical obstacles must be provided with a minimum height of 1.60m. In addition to these requirements the competition must comply with the following **mandatory requirements** to count for the CH-M-S 2022:*

- *The first obstacle may be a vertical minimum height 1m45 or an oxer minimum height 1m40 for the front pole and 1m45 for the back pole;*
- *One set of planks on flat cups;*
- *Triple bar minimum 1m80 spread and 1m50 height;*
- *One wall or gate;*
- *One narrow vertical or spread obstacle with frontal width between 2m50 to 3m00;*
- *Minimum one triple and one double combination (three doubles are not allowed);*
- *The triple combination must have at least one oxer minimum 1m50 height and 1m50 spread, and at least one one-stride distance either from A to B or from B to C;*
- *Approximately 50% of the efforts must be vertical obstacles and 50% must be spread obstacles (e.g. oxer, triple bar, Swedish oxer, narrow oxer etc.). Nevertheless, no more than 55% of the efforts may be vertical and no more than 60% of the efforts may be spread obstacles, including the water jump if there is one;*
- *Two verticals (other than the wall) must have a height of 1m60;*
- *At least two spread obstacles with minimum height of 1m50 and minimum spread of 1m60;*
- *Two liverpool obstacles, one vertical and one spread. If the course includes a water jump, a minimum of one liverpool will be allowed;*
- *Bend or straight line of up to six strides between two single obstacles;*

- *Depth of cups: minimum 50% of cups must have a depth of 18mm; depth of cups maximum 20mm if poles are 350-400cm long;*
- *Minimum length of course 400 meters with a minimum speed of 375m/min;*
- *The course will include minimum 12 and maximum 14 obstacles.*

*The Foreign Judge is responsible for ensuring that the course is built to the required dimensions and must confirm to the FEI through the Foreign Judge Report whether or not the course requirements have been met and must upload/sent the course plan including all heights and dimensions following the Event.*

**4<sup>th</sup> WEEK: 16 – 22 FEBRUARY 2021**  
**CSI3\*/CSI1\*/CSIYH1\***

**FIRST DAY : Thursday**

**DATE : 16/02/2021**

**COMPETITION No: YH-28**

**Time: 09:00H**

**Young horses 5 years old**

238.1.1 (Table A not against the clock)

Jump-off (if any)

No

Speed/Fixed time

350m/min.

Height of obstacles:

1,10/1,15m

Number of horses per athlete

3

Number of Starters:

\*100 (if more than 100 take part then please refer to Section XIV point 9)

Total prize money:

700€

Chart to be used:

1 (25% to winner)

Please specify prize money amount for each athlete placed 13<sup>th</sup> and beyond: 5€

**COMPETITION No: YH-29**

**Time: following**

**Young horses 6 years old**

238.2.1 (Table A against the clock)

Jump-off (if any)

No

Speed/Fixed time

350m/min.

Height of obstacles:

1,20/1,25m

Number of horses per athlete

3

Number of Starters:

\*100 (if more than 100 take part then please refer to Section XIV point 9)

Total prize money:

1.000€

Chart to be used:

1 (25% to winner)

Please specify prize money amount for each athlete placed 13<sup>th</sup> and beyond: 5€

**COMPETITION No: YH-30**

**Time: following**

<b>Young horses 7 years old</b>	238.2.1 (Table A against the clock)
Jump-off (if any)	No
Speed/Fixed time	350m/min.
Height of obstacles:	1,30/1,35m
Number of horses per athlete	3
Number of Starters:	*100 (if more than 100 take part then please refer to Section XIV point 9)
Total prize money:	1.700€
Chart to be used:	1 (25% to winner)
Please specify prize money amount for each athlete placed 13 <sup>th</sup> and beyond: 5€	

**SECOND DAY : Wednesday**

**DATE : 17/02/2021**

**COMPETITION No: YH-31**

**Time: 09:00H**

<b>Young horses 5 years old</b>	238.1.1 (Table A not against the clock)
Jump-off (if any)	No
Speed/Fixed time	350m/min.
Height of obstacles:	1,10/1,15m
Number of horses per athlete	3
Number of Starters:	*100 (if more than 100 take part then please refer to Section XIV point 9)
Total prize money:	700€
Chart to be used:	1 (25% to winner)
Please specify prize money amount for each athlete placed 13 <sup>th</sup> and beyond: 5€	

**COMPETITION No: YH-32**

**Time: following**

<b>Young horses 6 years old</b>	238.2.2 (Table A against the clock with jump off)
Jump-off (if any)	1 against the clock
Speed/Fixed time	350m/min.
Height of obstacles:	1,20/1,25m
Number of horses per athlete	3
Number of Starters:	*100 (if more than 100 take part then please refer to Section XIV point 9)
Total prize money:	2.300€
Chart to be used:	1 (25% to winner)
Please specify prize money amount for each athlete placed 13 <sup>th</sup> and beyond: 5€	

**COMPETITION No: YH-33**

**Time: following**

<b>Young horses 7 years old</b>	238.2.2 (Table A against the clock with jump off)
---------------------------------	---

**FEI APPROVED SCHEDULE**  
**Vilamoura 25 January – 07 March 2021**



Jump-off (if any)	1 against the clock
Speed/Fixed time	350m/min.
Height of obstacles:	1,30/1,35m
Number of horses per athlete	3
Number of Starters:	*100 (if more than 100 take part then please refer to Section XIV point 9)
Total prize money:	2.700€
Chart to be used:	1 (25% to winner)
Please specify prize money amount for each athlete placed 13 <sup>th</sup> and beyond: 5€	

**THIRD DAY : Thursday**

**DATE : 18/02/2021**

<b><u>COMPETITION No: YH-34</u></b>		<b>Time: 09:00H</b>
<b>Young horses 5 years old</b>	238.1.1 (Table A not against the clock)	
Jump-off (if any)	No	
Speed/Fixed time	350m/min.	
Height of obstacles:	1,10/1,15m	
Number of horses per athlete	3	
Number of Starters:	*100 (if more than 100 take part then please refer to Section XIV point 9)	
Total prize money:	700€	
Chart to be used:	1 (25% to winner)	
Please specify prize money amount for each athlete placed 13 <sup>th</sup> and beyond: 5€		

<b><u>COMPETITION No YH-35</u></b>		<b>Time: following</b>
<b>Young Horses 6 years old:</b>	274.2.5 (Two phases, 1 <sup>st</sup> not against the clock, 2 <sup>nd</sup> against the clock)	
Jump-off (if any)	No	
Speed/Fixed time	350m/min.	
Height of obstacles:	1,20/1,25m	
Number of horses per athlete	3	
Maximum number of Starters:	*100 (if more than 100 take part then please refer to Section XIV point 9)	
Total prize money	1.000€	
Chart to be used:	1 (25% to winner)	
Please specify prize money amount for athlete placed beyond 13 <sup>th</sup> : 5€		

<b><u>COMPETITION No: YH-36</u></b>		<b>Time: following</b>
<b>Young horses 7 years old</b>	274.2.5 (Two phases, 1 <sup>st</sup> not against the clock, 2 <sup>nd</sup> against the clock)	
Jump-off (if any)	No	
Speed/Fixed time	350m/min.	
Height of obstacles:	1,30/1,35m	



Number of horses per athlete	3
Number of Starters:	*100 (if more than 100 take part then please refer to Section XIV point 9)
Total prize money:	1.700€
Chart to be used:	1 (25% to winner)
Please specify prize money amount for each athlete placed 13 <sup>th</sup> and beyond: 5€	

**COMPETITION No A-47 CSI 3\***

**Time: following**

<b>Medium Tour:</b>	238.2.1 (Table A against the clock)
Jump-off (if any)	No
Speed/Fixed time	375m/min.
Height of obstacles:	1,30m
Number of horses per athlete	3
Maximum number of Starters:	*100 (if more than 100 take part then please refer to Section XIV point 9)
Total prize money	2.000€
Chart to be used:	1 (25% to winner)
Please specify prize money amount for athlete placed beyond 13 <sup>th</sup> : 10€	

**COMPETITION No A-48 CSI 3\***

**Time: following**

<b>Big Tour:</b>	238.2.1 (Table A against the clock)
Jump-off (if any)	No
Speed/Fixed time	375m/min.
Height of obstacles:	1,40m
Number of horses per athlete	2
Maximum number of Starters:	*100 (if more than 100 take part then please refer to Section XIV point 9)
Total prize money	4.000€
Chart to be used:	1 (25% to winner)
Please specify prize money amount for athlete placed beyond 13 <sup>th</sup> : 10€	

**COMPETITION No A-49 CSI 3\***

**Time: following**

**Qualifier for the G.P.**

**This Competition counts for the FEI Longines Ranking Group D**

**Qualifier for the G.P. and qualified the best 100 for Competition A-53**

<b>Big Tour:</b>	274.2.5 (Two phases, 1 <sup>st</sup> not against the clock, 2 <sup>nd</sup> against the clock)
Jump-off (if any)	No
Speed/Fixed time	375m/min.
Height of obstacles:	1,45m
Number of horses per athlete	1
Maximum number of Starters:	*100 (if more than 100 take part then please refer to Section XIV point 9)

Total prize money	<b>25.700€</b>
Chart to be used:	1 (25% to winner)
Please specify prize money amount for athlete placed beyond 13 <sup>th</sup> : 50€	

**FOURTH DAY : Friday**

**DATE: 19/02/2021**

**COMPETITION No B-10 CSI 1\***

**Time: following**

<b>Small Tour :</b>	238.2.1 (Table A against the clock)
Jump-off (if any)	No
Speed/Fixed time	350m/min.
Height of obstacles:	1,10m
Number of horses per athlete	3
Maximum number of Starters:	*100 (if more than 100 take part then please refer to Section XIV point 9)
Total prize money	600€
Chart to be used:	1 (25% to winner)
Please specify prize money amount for athlete placed beyond 13 <sup>th</sup> : 5€	

**COMPETITION No A-50 CSI 3\***

**Time: following**

<b>Small Tour:</b>	238.2.1 (Table A against the clock)
Jump-off (if any)	No
Speed/Fixed time	350m/min.
Height of obstacles:	1,20m
Number of horses per athlete	3
Maximum number of Starters:	*100 (if more than 100 take part then please refer to Section XIV point 9)
Total prize money	1.000€
Chart to be used:	1 (25% to winner)
Please specify prize money amount for athlete placed beyond 13 <sup>th</sup> : 5€	

**COMPETITION No A-51 CSI 3\***

**Time: following**

<b>Medium Tour:</b>	274.2.5 (Two phases, 1 <sup>st</sup> not against the clock, 2 <sup>nd</sup> against the clock)
Jump-off (if any)	No
Speed/Fixed time	375m/min.
Height of obstacles:	1,35m
Number of horses per athlete	3
Maximum number of Starters:	*100 (if more than 100 take part then please refer to Section XIV point 9)
Total prize money	2.500€
Chart to be used:	1 (25% to winner)
Please specify prize money amount for athlete placed beyond 13 <sup>th</sup> : 10€	

**COMPETITION No A-52 CSI 3\***

**Time: following**

<b>Big Tour:</b>	238.2.1 (Table A against the clock)
Jump-off (if any)	No
Speed/Fixed time	375m/min.
Height of obstacles:	1,40m
Number of horses per athlete	2
Maximum number of Starters:	*100 (if more than 100 take part then please refer to Section XIV point 9)
Total prize money	4.000€
Chart to be used:	1 (25% to winner)
Please specify prize money amount for athlete placed beyond 13 <sup>th</sup> : 20€	

**COMPETITION No A-53 CSI 3\***

**Time: following**

**Qualifier for the G.P.**

**This Competition counts for the FEI Longines Ranking Group D**

**Open to 100 riders. The best 100 riders of Competition A-49**

**Should the overall number of riders entered be equal to/less than 100 no qualification system will be applied for the participation.**

**Qualifier for competition A-62 Grand Prix. The best riders, not already qualified in competition A-49, to reach the number of 60 starters (including automatically qualify for competition A-62 (should the overall number of riders entered in competition A-62 be equal to/less than 60 no qualification system will be applied for the participation in class A-62)**

<b>Big Tour:</b>	238.2.2 (Table A against the clock with Jump-off)
Jump-off (if any)	1 against the clock
Speed/Fixed time	375m/min.
Height of obstacles:	1,45m
Number of horses per athlete	1
Maximum number of Starters:	100
Total prize money	<b>25.700€</b>
Chart to be used:	1 (25% to winner)
Please specify prize money amount for athlete placed beyond 13 <sup>th</sup> : 50€	

**FIFTH DAY : Saturday**

**DATE: 20/02/2021**

**COMPETITION No B-11 CSI 1\***

**Time: 09:00H**

<b>Small Tour:</b>	269.1,2,3,5 (Accumulator Competition)
Jump-off (if any)	No
Speed/Fixed time	350m/min.
Height of obstacles:	1,10m
Number of horses per athlete	3
Maximum number of Starters:	*100 (if more than 100 take part then please refer to Section XIV point 9)
Total prize money	600€

**FEI APPROVED SCHEDULE**  
**Vilamoura 25 January – 07 March 2021**



Chart to be used: 1 (25% to winner)  
Please specify prize money amount for athlete placed beyond 13<sup>th</sup> : 5€

**COMPETITION No A-54 CSI 3\***

**Time: following**

**Small Tour:** 274.1.5.3 (Two phases, both against the clock - Table A)  
Jump-off (if any) No  
Speed/Fixed time 350m/min.  
Height of obstacles: 1,20m  
Number of horses per athlete 3  
Maximum number of Starters: \*100 (if more than 100 take part then please refer to Section XIV point 9)  
Total prize money 1.000€  
Chart to be used: 1 (25% to winner)  
Please specify prize money amount for athlete placed beyond 13<sup>th</sup> : 5€

**COMPETITION No A-55 CSI 3\***

**Time: following**

**Medium Tour:** 274.2.5 (Two phases, 1<sup>st</sup> not against the clock, 2<sup>nd</sup> against the clock)  
Jump-off (if any) No  
Speed/Fixed time 375m/min.  
Height of obstacles: 1,30m  
Number of horses per athlete 3  
Maximum number of Starters: \*100 (if more than 100 take part then please refer to Section XIV point 9)  
Total prize money 2.000€  
Chart to be used: 1 (25% to winner)  
Please specify prize money amount for athlete placed beyond 13<sup>th</sup> : 10€

**COMPETITION No A-56 CSI 3\***

**Time: following**

**Medium Tour :** 238.2.1 (Table A against the clock)  
Jump-off (if any) No  
Speed/Fixed time 375m/min.  
Height of obstacles: 1,35m  
Number of horses per athlete 3  
Maximum number of Starters: \*100 (if more than 100 take part then please refer to Section XIV point 9)  
Total prize money 2.500€  
Chart to be used: 1 (25% to winner)  
Please specify prize money amount for athlete placed beyond 13<sup>th</sup> : 10€

**COMPETITION No A-57 CSI 3\***

**Time: following**

<b>Big Tour:</b>	238.2.2 (Table A against the clock with jump off)
Jump-off (if any)	1 against the clock
Speed/Fixed time	375m/min.
Height of obstacles:	1,40m
Number of horses per athlete	1
Maximum number of Starters:	*100 (if more than 100 take part then please refer to Section XIV point 9)
Total prize money	8.000€
Chart to be used:	1 (25% to winner)
Please specify prize money amount for athlete placed beyond 13 <sup>th</sup> : 20€	

**COMPETITION No A-58 CSI 3\***

**Time: following**

<b>Big Tour:</b>	238.2.1 (Table A against the clock)
Jump-off (if any)	No
Speed/Fixed time	375m/min.
Height of obstacles:	1,40m
Number of horses per athlete	1
Maximum number of Starters:	*100 (if more than 100 take part then please refer to Section XIV point 9)
Total prize money	4.000€
Chart to be used:	1 (25% to winner)
Please specify prize money amount for athlete placed beyond 13 <sup>th</sup> : 20€	

**SIXTH DAY : Sunday**

**DATE: 21/02/2021**

**COMPETITION No B-12 CSI 1\***

**Time: 09:00H**

<b>Small Tour:</b>	274.2.5 (Two phases, 1 <sup>st</sup> not against the clock, 2 <sup>nd</sup> against the clock)
Jump-off (if any)	No
Speed/Fixed time	350m/min.
Height of obstacles:	1,10/1,15m
Number of horses per athlete	3
Maximum number of Starters:	*100 (if more than 100 take part then please refer to Section XIV point 9)
Total prize money	600€
Chart to be used:	1 (25% to winner)
Please specify prize money amount for athlete placed beyond 13 <sup>th</sup> : 5€	

**COMPETITION No A-59 CSI 3\***

**Time: following**

<b>Small Tour:</b>	238.2.1 (Table A against the clock)
Jump-off (if any)	No
Speed/Fixed time	350m/min.

**FEI APPROVED SCHEDULE**  
**Vilamoura 25 January – 07 March 2021**



Height of obstacles:	1,20m
Number of horses per athlete	3
Maximum number of Starters:	*100 (if more than 100 take part then please refer to Section XIV point 9)
Total prize money	1.000€
Chart to be used:	1 (25% to winner)
Please specify prize money amount for athlete placed beyond 13 <sup>th</sup> : 5€	

**COMPETITION No A-60 CSI 3\***

**Time: following**

<b>Medium Tour:</b>	238.2.1 (Table A against the clock)
Jump-off (if any)	No
Speed/Fixed time	375m/min.
Height of obstacles:	1,30m
Number of horses per athlete	3
Maximum number of Starters:	*100 (if more than 100 take part then please refer to Section XIV point 9)
Total prize money	2.000€
Chart to be used:	1 (25% to winner)
Please specify prize money amount for athlete placed beyond 13 <sup>th</sup> : 10€	

**COMPETITION No A-61 CSI 3\***

**Time: following**

**QUALIFIER FOR CH-EU JUNIOR 2021**

<b>Medium Tour :</b>	238.2.2 (Table A against the clock with Jump-off)
Jump-off (if any)	1 against the clock
Speed/Fixed time	375m/min.
Height of obstacles:	1,35m
Number of horses per athlete	3
Maximum number of Starters:	*100 (if more than 100 take part then please refer to Section XIV point 9)
Total prize money	2.500€
Chart to be used:	1 (25% to winner)
Please specify prize money amount for athlete placed beyond 13 <sup>th</sup> : 10€	

**COMPETITION No A-62 CSI 3\***

**Time: following**

This Competition counts for the FEI Longines Ranking Group C

<b>Big Tour: Grand Prix</b>	238.2.2 (Table A against the clock with jump off) + FEI Olympic Regulations Art. 632.6.1 / JRs Annex VIII, Art. 4.11 / JRs Annex VIII, Art. 3.11
Jump-off (if any)	1 against the clock
Speed/Fixed time	375m/min.
Height of obstacles:	1,50m (2 verticals of 1m60 compulsory)
Number of horses per athlete	1
Maximum number of Starters:	60

This GP is open to 60 riders of the CSI qualified under the following conditions:

The following Athletes (not Athlete/Horse combinations) are automatically qualified for the Grand Prix at CSI

Events, if present:

- 261.4.2.1. The winner of that Event's Grand Prix the previous year;
- 261.4.2.2. The current National Jumping Champion of the host country;
- 261.4.2.3. The individual Jumping medal winners of the last Olympic and Pan-American Games, the last World and Continental Championships and the winner of the last FEI World Cup™ Jumping Final.

Athletes qualified for the Grand Prix :

The best 40 Athletes in competition n° **A-49**

The best 20 Athletes in competition n° **A-53**, not qualified in competition **A-49** to reach a total of 60 starters (including prequalified riders).

**Qualified athletes who decide not to start until 4 hours before the start of the competition, will be replaced with the following placed athletes in the class in which they got qualified**

**All athletes qualified for the Grand Prix, including those automatically qualified must complete, with their Grand Prix horse, the initial round of at least one FEI competition among those listed in JRs Art. 261.4.4 prior to the Grand Prix.**

Total prize money **51.700€**

Chart to be used: 1 (25% to winner)

Please specify prize money amount for athlete placed beyond 13<sup>th</sup> : 50€

**Qualifier for Tokyo Olympic Games in 2021 / CH-EU-S 2021\* / CH-M-S 2022 (Certificates of Capability)**

*\*Final confirmation on the holding of these Championships to be provided in early 2021.*

**Counting for Tokyo Olympic Games 2021 / CH-EU-S 2021**

*This competition will count as a competition where athletes and horses can achieve the Minimum Eligibility Requirements (MER) providing the course meets the following specifications: consist of at least 12 obstacles which may vary in height between 1.40m and 1.60m. The spread obstacles must have spreads of between 1.50m to 2.00m (2.20m for the triple bar). At least two vertical obstacles must be provided with a minimum height of 1.60m.*

**Counting for CH-M-S 2022**

*This competition will count as a competition where athletes and horses can achieve the Minimum Eligibility Requirements (MER) providing the course meets the following specifications: consist of at least 12 obstacles which may vary in height between 1.40m and 1.60m. The spread obstacles must have spreads of between 1.50m to 2.00m (2.20m for the triple bar). At least two vertical obstacles must be provided with a minimum height of 1.60m. In addition to these requirements the competition must comply with the following **mandatory requirements** to count for the CH-M-S 2022:*

- *The first obstacle may be a vertical minimum height 1m45 or an oxer minimum height 1m40 for the front pole and 1m45 for the back pole;*
- *One set of planks on flat cups;*
- *Triple bar minimum 1m80 spread and 1m50 height;*
- *One wall or gate;*
- *One narrow vertical or spread obstacle with frontal width between 2m50 to 3m00;*
- *Minimum one triple and one double combination (three doubles are not allowed);*
- *The triple combination must have at least one oxer minimum 1m50 height and 1m50 spread, and at least one one-stride distance either from A to B or from B to C;*
- *Approximately 50% of the efforts must be vertical obstacles and 50% must be spread obstacles (e.g. oxer, triple bar, Swedish oxer, narrow oxer etc.). Nevertheless, no more than 55% of the efforts may be vertical and no more than 60% of the efforts may be spread obstacles, including the water jump if there is one;*
- *Two verticals (other than the wall) must have a height of 1m60;*
- *At least two spread obstacles with minimum height of 1m50 and minimum spread of 1m60;*
- *Two liverpool obstacles, one vertical and one spread. If the course includes a water jump, a minimum of one liverpool will be allowed;*
- *Bend or straight line of up to six strides between two single obstacles;*
- *Depth of cups: minimum 50% of cups must have a depth of 18mm; depth of cups maximum 20mm if poles are 350-400cm long;*
- *Minimum length of course 400 meters with a minimum speed of 375m/min;*

- *The course will include minimum 12 and maximum 14 obstacles.*

*The Foreign Judge is responsible for ensuring that the course is built to the required dimensions and must confirm to the FEI through the Foreign Judge Report whether or not the course requirements have been met and must upload/sent the course plan including all heights and dimensions following the Event.*

**5<sup>th</sup> WEEK: 22 - 28 FEBRUARY 2021**  
**CSI3\*/CSI1\*/CSIYH2\***

**YOUNG HORSES EUROPEAN CUP**

**FIRST DAY : Monday**

**DATE: 22/02/2021**

**COMPETITION No: YH-37**

**Time: 09:00H**

**Young horses 5 years old**

**FINAL 1<sup>st</sup> Round**

Article: 273.2.1/ 273.3.4.1/ 273.4.4 (Two rounds against the clock with Jump-off)

Competition description:	Second round for all Athletes
Jump-off (if any)	1 against the clock
Speed/Fixed time	350m/min.
Height of obstacles:	1,15m
Number of horses per athlete:	3
Number of Starters:	*100 (if more than 100 take part then please refer to Section XIV point 9)
Total prize money:	-----

**COMPETITION No: YH-38**

**Time: following**

**Young horses 6 years old:**

**FINAL 1<sup>st</sup> Round**

Article: 273.2.1/ 273.3.4.1/ 273.4.4 (Two rounds against the clock with Jump-off)

Competition description:	Second round for All Athletes
Jump-off (if any)	1 against the clock
Speed/Fixed time	350m/min.
Height of obstacles:	1,30/1,35m
Number of horses per athlete	3
Number of Starters:	*100 (if more than 100 take part then please refer to Section XIV point 9)
Total prize money:	-----



**SECOND DAY : Tuesday**

**DATE: 23/02/2021**

**COMPETITION No: YH-39**

**Time: following**

**Young horses 7 years old**

**FINAL 1<sup>st</sup> Round**

Article: 273.2.1/ 273.3.4.1/ 273.4.4 (Two rounds against the clock with Jump-off)

Competition description:	Second round for All Athletes
Jump-off (if any)	1 against the clock
Speed/Fixed time	350m/min.
Height of obstacles:	1,45m
Number of horses per athlete	3
Number of Starters:	*100 (if more than 100 take part then please refer to Section XIV point 9)
Total prize money:	-----

**COMPETITION No: YH-40**

**Time: following**

**Young horses 6 years old – FINAL: 2<sup>nd</sup> Round**

Article: 273.2.1/ 273.3.4.1/ 273.4.4 (Two rounds against the clock with Jump-off)

Competition description:  
Starting order – Reverse order of penalties and time in the 1<sup>st</sup> round.  
Second round for the 100% of the competitors in the 1<sup>st</sup> round. Athletes will be placed according to aggregate Penalties over both rounds and the time incurred in the second round.  
Will be a Jump-off against the clock, for the riders with equality of aggregate Penalties over both rounds and the time incurred in the second round.

Jump-off (if any)	1 against the clock
Speed/Fixed time	350m/min.
Height of obstacles:	1,30/,35m
Number of horses per athlete	3
Number of Starters:	*100 (if more than 100 take part then please refer to Section XIV point 9)
Total prize money:	<b>15.000€</b>

Please specify prize money amount for athlete placed beyond 13<sup>th</sup> : 20€

**THIRTH DAY : Wednesday**

**DATE : 24/02/2021**

**COMPETITION No: YH-41**

**Time: 09:00H**

**Young horses 5 years old – FINAL: 2<sup>nd</sup> Round**

Article: 273.2.1/ 273.3.4.1/ 273.4.4 (Two rounds against the clock with Jump-off)

Competition description:

Starting order – Reverse order of penalties and time in the 1<sup>st</sup> round.

Second round for the 100% of the competitors in the 1<sup>st</sup> round. Athletes will be placed according to aggregate Penalties over both rounds and the time incurred in the second round.

Will be a Jump-off against the clock, for the riders with equality of aggregate Penalties over both rounds and the time incurred in the second round.

Jump-off (if any)	1 against the clock
Speed/Fixed time	350m/min.
Height of obstacles:	1,15m
Number of horses per athlete	3
Number of Starters:	*100 (if more than 100 take part then please refer to Section XIV point 9)
Total prize money:	<b>5.000€</b>
Please specify prize money amount for athlete placed beyond 13 <sup>th</sup> : 20€	

**COMPETITION No: YH-42**

**Time: following**

**This Competition counts for the FEI Longines Ranking Group D**

**Young horses 7 years old – FINAL: 2<sup>nd</sup> Round**

Article: 273.2.1/ 273.3.4.1/ 273.4.4 (Two rounds against the clock with Jump-off)

Competition description:

Starting order – Reverse order of penalties and time in the 1<sup>st</sup> round.

Second round for the 100% of the competitors in the 1<sup>st</sup> round. Athletes will be placed according to aggregate Penalties over both rounds and the time incurred in the second round.

Will be a Jump-off against the clock, for the riders with equality of aggregate Penalties over both rounds and the time incurred in the second round.

Jump-off (if any)	1 against the clock
Speed/Fixed time	350m/min.
Height of obstacles:	1,45m
Number of horses per athlete	3
Number of Starters:	*100 (if more than 100 take part then please refer to Section XIV point 9)
Total prize money:	<b>25.700€</b>
Please specify prize money amount for athlete placed beyond 13 <sup>th</sup> : 50€	

**FOURTH DAY : Wednesday**

**DATE : 25/02/2021**

**COMPETITION No A-63 CSI 3\***

**Time: following**

<b>Medium Tour:</b>	238.2.1 (Table A against the clock)
Jump-off (if any)	No
Speed/Fixed time	375m/min.
Height of obstacles:	1,30m
Number of horses per athlete	3
Maximum number of Starters:	*100 (if more than 100 take part then please refer to Section XIV point 9)
Total prize money	2.000€
Chart to be used:	1 (25% to winner)
Please specify prize money amount for athlete placed beyond 13 <sup>th</sup> : 10€	

**COMPETITION No A-64 CSI 3\***

**Time: following**

<b>Big Tour:</b>	238.2.1 (Table A against the clock)
Jump-off (if any)	No
Speed/Fixed time	375m/min.
Height of obstacles:	1,40m
Number of horses per athlete	2
Maximum number of Starters:	*100 (if more than 100 take part then please refer to Section XIV point 9)
Total prize money	4.000€
Chart to be used:	1 (25% to winner)
Please specify prize money amount for athlete placed beyond 13 <sup>th</sup> : 10€	

**COMPETITION No A-65 CSI 3\***

**Time: following**

**Qualifier for the G.P.**

**This Competition counts for the FEI Longines Ranking Group D**

**Qualifier for the G.P. and qualified the best 100 for Competition A-69**

<b>Big Tour:</b>	274.2.5 (Two phases, 1 <sup>st</sup> not against the clock, 2 <sup>nd</sup> against the clock)
Jump-off (if any)	No
Speed/Fixed time	375m/min.
Height of obstacles:	1,45m
Number of horses per athlete	1
Maximum number of Starters:	100
Total prize money	<b>25.700€</b>
Chart to be used:	1 (25% to winner)
Please specify prize money amount for athlete placed beyond 13 <sup>th</sup> : 50€	

**FIFTH DAY : Friday**

**DATE: 26/02/2021**

**COMPETITION No B-13 CSI 1 \***

**Time: following**

**Small Tour :** 238.2.1 (Table A against the clock)  
Jump-off (if any) No  
Speed/Fixed time 350m/min.  
Height of obstacles: 1,10m  
Number of horses per athlete 3  
Maximum number of Starters: \*100 (if more than 100 take part then please refer to Section XIV point 9)  
Total prize money 600€  
Chart to be used: 1 (25% to winner)  
Please specify prize money amount for athlete placed beyond 13<sup>th</sup> : 5€

**COMPETITION No A-66 CSI 3 \***

**Time: following**

**Small Tour:** 238.2.1 (Table A against the clock)  
Jump-off (if any) No  
Speed/Fixed time 350m/min.  
Height of obstacles: 1,20m  
Number of horses per athlete 3  
Maximum number of Starters: \*100 (if more than 100 take part then please refer to Section XIV point 9)  
Total prize money 1.000€  
Chart to be used: 1 (25% to winner)  
Please specify prize money amount for athlete placed beyond 13<sup>th</sup> : 5€

**COMPETITION No A-67 CSI 3 \***

**Time: following**

**Medium Tour:** 269.1,2,3,5 (accumulator competition)  
Jump-off (if any) No  
Speed/Fixed time 375m/min.  
Height of obstacles: 1,35m  
Number of horses per athlete 3  
Maximum number of Starters: \*100 (if more than 100 take part then please refer to Section XIV point 9)  
Total prize money 2.500€  
Chart to be used: 1 (25% to winner)  
Please specify prize money amount for athlete placed beyond 13<sup>th</sup> : 10€

**COMPETITION No A-68 CSI 3\***

**Time: following**

<b>Big Tour:</b>	238.2.1 (Table A against the clock)
Jump-off (if any)	No
Speed/Fixed time	375m/min.
Height of obstacles:	1,40m
Number of horses per athlete	2
Maximum number of Starters:	*100 (if more than 100 take part then please refer to Section XIV point 9)
Total prize money	4.000€
Chart to be used:	1 (25% to winner)
Please specify prize money amount for athlete placed beyond 13 <sup>th</sup> : 20€	

**COMPETITION No A-69 CSI 3\***

**Time: following**

**Qualifier for the G.P.**

**This Competition counts for the FEI Longines Ranking Group D**

**Open to 100 riders. The best 100 riders of Competition A-65**

**Should the overall number of riders entered be equal to/less than 100 no qualification system will be applied for the participation.**

**Qualifier for competition A-78 Grand Prix. The best riders, not already qualified in competition A-65, to reach the number of 60 starters (including automatically qualify for competition A-78 (should the overall number of riders entered in competition A-78 be equal to/less than 60 no qualification system will be applied for the participation in class A-78)**

<b>Big Tour:</b>	238.2.2 (Table A against the clock with jump off)
Jump-off (if any)	1 against the clock
Speed/Fixed time	375m/min.
Height of obstacles:	1,45m
Number of horses per athlete	1
Maximum number of Starters:	100
Total prize money	<b>25.700€</b>
Chart to be used:	1 (25% to winner)
Please specify prize money amount for athlete placed beyond 13 <sup>th</sup> : 50€	

**SIXTH DAY : Saturday**

**DATE: 27/02/2021**

**COMPETITION No B-14 CSI 1\***

**Time: 09:00H**

<b>Small Tour:</b>	238.2.1 (Table A against the clock)
Jump-off (if any)	No
Speed/Fixed time	350m/min.
Height of obstacles:	1,10m
Number of horses per athlete	3
Maximum number of Starters:	*100 (if more than 100 take part then please refer to Section XIV point 9)
Total prize money	600€

**FEI APPROVED SCHEDULE**  
**Vilamoura 25 January – 07 March 2021**



Chart to be used: 1 (25% to winner)  
Please specify prize money amount for athlete placed beyond 13<sup>th</sup> : 5€

**COMPETITION No A-70 CSI 3\***

**Time: following**

**Small Tour:** 274.1.5.3 (Two phases, both against the clock - Table A)  
Jump-off (if any) No  
Speed/Fixed time 350m/min.  
Height of obstacles: 1,20m  
Number of horses per athlete 3  
Maximum number of Starters: \*100 (if more than 100 take part then please refer to Section XIV point 9)  
Total prize money 1.000€  
Chart to be used: 1 (25% to winner)  
Please specify prize money amount for athlete placed beyond 13<sup>th</sup> : 5€

**COMPETITION No A-71 CSI 3\***

**Time: following**

**Medium Tour:** 274.2.5 (Two phases, 1<sup>st</sup> not against the clock, 2<sup>nd</sup> against the clock)  
Jump-off (if any) No  
Speed/Fixed time 375m/min.  
Height of obstacles: 1,30m  
Number of horses per athlete 3  
Maximum number of Starters: \*100 (if more than 100 take part then please refer to Section XIV point 9)  
Total prize money 2.000€  
Chart to be used: 1 (25% to winner)  
Please specify prize money amount for athlete placed beyond 13<sup>th</sup> : 10€

**COMPETITION No A-72 CSI 3\***

**Time: following**

**Medium Tour :** 238.2.1 (Table A against the clock)  
Jump-off (if any) No  
Speed/Fixed time 375m/min.  
Height of obstacles: 1,35m  
Number of horses per athlete 3  
Maximum number of Starters: \*100 (if more than 100 take part then please refer to Section XIV point 9)  
Total prize money 2.500€  
Chart to be used: 1 (25% to winner)  
Please specify prize money amount for athlete placed beyond 13<sup>th</sup> : 10€

**COMPETITION No A-73 CSI 3\***

**Time: following**

<b>Big Tour:</b>	238.2.2 (Table A against the clock with jump off)
Jump-off (if any)	1 against the clock
Speed/Fixed time	375m/min.
Height of obstacles:	1,40m
Number of horses per athlete	1
Maximum number of Starters:	*100 (if more than 100 take part then please refer to Section XIV point 9)
Total prize money	8.000€
Chart to be used:	1 (25% to winner)
Please specify prize money amount for athlete placed beyond 13 <sup>th</sup> : 20€	

**COMPETITION No A-74 CSI 3\***

**Time: following**

<b>Big Tour:</b>	238.2.1 (Table A against the clock)
Competition to count for certificates of capability for the YR and Junior CH-EU Vilamoura 2021	
Jump-off (if any)	No
Speed/Fixed time	375m/min.
Height of obstacles:	1,40m
Number of horses per athlete	1
Maximum number of Starters:	*100 (if more than 100 take part then please refer to Section XIV point 9)
Total prize money	4.000€
Chart to be used:	1 (25% to winner)
Please specify prize money amount for athlete placed beyond 13 <sup>th</sup> : 10€	

**SEVENTH DAY : Sunday**

**DATE: 28/02/2021**

**COMPETITION No B-15 CSI 1\***

**Time: 09:00H**

<b>Small Tour:</b>	274.2.5 (Two phases, 1 <sup>st</sup> not against the clock, 2 <sup>nd</sup> against the clock)
Jump-off (if any)	No
Speed/Fixed time	350m/min.
Height of obstacles:	1,10/1,15m
Number of horses per athlete	3
Maximum number of Starters:	*100 (if more than 100 take part then please refer to Section XIV point 9)
Total prize money	600€
Chart to be used:	1 (25% to winner)
Please specify prize money amount for athlete placed beyond 13 <sup>th</sup> : 5€	

**COMPETITION No A-75 CSI 3\***

**Time: following**

<b>Small Tour:</b>	238.2.2 (Table A against the clock with Jump-off)
Jump-off (if any)	1 against the clock
Speed/Fixed time	350m/min.
Height of obstacles:	1,20m
Number of horses per athlete	3
Maximum number of Starters:	*100 (if more than 100 take part then please refer to Section XIV point 9)
Total prize money	1.000€
Chart to be used:	1 (25% to winner)
Please specify prize money amount for athlete placed beyond 13 <sup>th</sup> : 5€	

**COMPETITION No A-76 CSI 3\***

**Time: following**

<b>Medium Tour:</b>	238.2.1 (Table A against the clock)
Jump-off (if any)	No
Speed/Fixed time	375m/min.
Height of obstacles:	1,30m
Number of horses per athlete	3
Maximum number of Starters:	*100 (if more than 100 take part then please refer to Section XIV point 9)
Total prize money	2.000€
Chart to be used:	1 (25% to winner)
Please specify prize money amount for athlete placed beyond 13 <sup>th</sup> : 10€	

**COMPETITION No A-77 CSI 3\***  
**QUALIFIER FOR CH-EU JUNIOR 2021**

**Time: following**

<b>Medium Tour :</b>	238.2.2 (Table A against the clock with Jump-off))
Jump-off (if any)	1 against the clock
Speed/Fixed time	375m/min.
Height of obstacles:	1,35m
Number of horses per athlete	3
Maximum number of Starters:	*100 (if more than 100 take part then please refer to Section XIV point 9)
Total prize money	2.500€
Chart to be used:	1 (25% to winner)
Please specify prize money amount for athlete placed beyond 13 <sup>th</sup> : 10€	

**COMPETITION No A-78 CSI 3\***

**Time: following**

This Competition counts for the FEI Longines Ranking group C

<b>Big Tour: Grand Prix</b>	238.2.2 (Table A against the clock with jump off) + FEI Olympic Regulations Art. 632.6.1 / JRs Annex VIII, Art. 4.11 / JRs Annex VIII, Art. 3.11
Jump-off (if any)	1 against the clock
Speed/Fixed time	375m/min.
Height of obstacles:	1,50m (2 verticals of 1m60 compulsory)



Number of horses per athlete 1  
Maximum number of Starters: 60

This GP is open to 60 riders of the CSI qualified under the following conditions:

The following Athletes (not Athlete/Horse combinations) are automatically qualified for the Grand Prix at CSI Events, if present:

- 261.4.2.1. The winner of that Event's Grand Prix the previous year;
- 261.4.2.2. The current National Jumping Champion of the host country;
- 261.4.2.3. The individual Jumping medal winners of the last Olympic and Pan-American Games, the last World and Continental Championships and the winner of the last FEI World Cup™ Jumping Final.

Athletes qualified for the Grand Prix :

The best 40 Athletes in competition n° **A-65**

The best 20 Athletes in competition n° **A-69**, not qualified in competition **A-69** to reach a total of 60 starters (including prequalified riders).

**Qualified athletes who decide not to start until 4 hours before the start of the competition, will be replaced with the following placed athletes in the class in which they got qualified**

**All athletes qualified for the Grand Prix, including those automatically qualified must complete, with their Grand Prix horse, the initial round of at least one FEI competition among those listed in JRs Art. 261.4.4 prior to the Grand Prix.**

Total prize money 51.700€  
Chart to be used: 1 (25% to winner)  
Please specify prize money amount for athlete placed beyond 13<sup>th</sup> : 50€

**Qualifier for Tokyo Olympic Games in 2021 / CH-EU-S 2021\* / CH-M-S 2022 (Certificates of Capability)**

*\*Final confirmation on the holding of these Championships to be provided in early 2021.*

**Counting for Tokyo Olympic Games 2021 / CH-EU-S 2021**

*This competition will count as a competition where athletes and horses can achieve the Minimum Eligibility Requirements (MER) providing the course meets the following specifications: consist of at least 12 obstacles which may vary in height between 1.40m and 1.60m. The spread obstacles must have spreads of between 1.50m to 2.00m (2.20m for the triple bar). At least two vertical obstacles must be provided with a minimum height of 1.60m.*

**Counting for CH-M-S 2022**

*This competition will count as a competition where athletes and horses can achieve the Minimum Eligibility Requirements (MER) providing the course meets the following specifications: consist of at least 12 obstacles which may vary in height between 1.40m and 1.60m. The spread obstacles must have spreads of between 1.50m to 2.00m (2.20m for the triple bar). At least two vertical obstacles must be provided with a minimum height of 1.60m. In addition to these requirements the competition must comply with the following **mandatory requirements** to count for the CH-M-S 2022:*

- The first obstacle may be a vertical minimum height 1m45 or an oxer minimum height 1m40 for the front pole and 1m45 for the back pole;
- One set of planks on flat cups;
- Triple bar minimum 1m80 spread and 1m50 height;
- One wall or gate;
- One narrow vertical or spread obstacle with frontal width between 2m50 to 3m00;
- Minimum one triple and one double combination (three doubles are not allowed);
- The triple combination must have at least one oxer minimum 1m50 height and 1m50 spread, and at least one one-stride distance either from A to B or from B to C;
- Approximately 50% of the efforts must be vertical obstacles and 50% must be spread obstacles (e.g. oxer, triple bar, Swedish oxer, narrow oxer etc.). Nevertheless, no more than 55% of the efforts may be vertical and no more than 60% of the efforts may be spread obstacles, including the water jump if there is one;
- Two verticals (other than the wall) must have a height of 1m60;
- At least two spread obstacles with minimum height of 1m50 and minimum spread of 1m60;

- Two liverpool obstacles, one vertical and one spread. If the course includes a water jump, a minimum of one liverpool will be allowed;
- Bend or straight line of up to six strides between two single obstacles;
- Depth of cups: minimum 50% of cups must have a depth of 18mm; depth of cups maximum 20mm if poles are 350-400cm long;
- Minimum length of course 400 meters with a minimum speed of 375m/min;
- The course will include minimum 12 and maximum 14 obstacles.

*The Foreign Judge is responsible for ensuring that the course is built to the required dimensions and must confirm to the FEI through the Foreign Judge Report whether or not the course requirements have been met and must upload/sent the course plan including all heights and dimensions following the Event.*

**6<sup>th</sup> WEEK: 01 – 07 MARCH 2021**  
**CSI4\*/CSI1\*/CSIYH1\***

**FIRST DAY : Tuesday**

**DATE : 02/03/2021**

**COMPETITION No: YH-43**

**Time: 09:00H**

**Young horses 5 years old**

238.1.1 (Table A not against the clock)

Jump-off (if any)

No

Speed/Fixed time

350m/min.

Height of obstacles:

1,10/1,15m

Number of horses per athlete

3

Number of Starters:

\*100 (if more than 100 take part then please refer to Section XIV point 9)

Total prize money:

500€

Chart to be used:

1 (25% to winner)

Please specify prize money amount for each athlete placed 13<sup>th</sup> and beyond: 5€

**COMPETITION No: YH-44**

**Time: following**

**Young horses 6 years old**

238.2.1 (Table A against the clock)

Jump-off (if any)

No

Speed/Fixed time

350m/min.

Height of obstacles:

1,20/1,25m

Number of horses per athlete

3

Number of Starters:

\*100 (if more than 100 take part then please refer to Section XIV point 9)

Total prize money:

800€

Chart to be used:

1 (25% to winner)

Please specify prize money amount for each athlete placed 13<sup>th</sup> and beyond: 5€

**COMPETITION No: YH-45**

**Time: following**

**Young horses 7 years old**

238.2.1 (Table A against the clock)

**FEI APPROVED SCHEDULE**  
**Vilamoura 25 January – 07 March 2021**



Jump-off (if any)	No
Speed/Fixed time	350m/min.
Height of obstacles:	1,30/1,35m
Number of horses per athlete	3
Number of Starters:	*100 (if more than 100 take part then please refer to Section XIV point 9)
Total prize money:	1.000€
Chart to be used:	1 (25% to winner)
Please specify prize money amount for each athlete placed 13 <sup>th</sup> and beyond: 5€	

**SECOND DAY : Wednesday**

**DATE : 03/03/2021**

**COMPETITION No: YH-46**

**Time: 09:00H**

**Young horses 5 years old**

238.1.1 (Table A not against the clock)

Jump-off (if any)	No
Speed/Fixed time	350m/min.
Height of obstacles:	1,10/1,15m
Number of horses per athlete	3
Number of Starters:	*100 (if more than 100 take part then please refer to Section XIV point 9)
Total prize money:	700€
Chart to be used:	1 (25% to winner)
Please specify prize money amount for each athlete placed 13 <sup>th</sup> and beyond: 5€	

**COMPETITION No: YH-47**

**Time: following**

**Young horses 6 years old**

238.2.2 (Table A against the clock with jump off)

Jump-off (if any)	1 against the clock
Speed/Fixed time	350m/min.
Height of obstacles:	1,20/1,25m
Number of horses per athlete	3
Number of Starters:	*100 (if more than 100 take part then please refer to Section XIV point 9)
Total prize money:	1.000€
Chart to be used:	1 (25% to winner)
Please specify prize money amount for each athlete placed 13 <sup>th</sup> and beyond: 5€	

**COMPETITION No: YH-48**

**Time: following**

**Young horses 7 years old**

238.2.2 (Table A against the clock with jump off)

Jump-off (if any)	1 against the clock
Speed/Fixed time	350m/min.
Height of obstacles:	1,30/1,35m

**FEI APPROVED SCHEDULE**  
**Vilamoura 25 January – 07 March 2021**



Number of horses per athlete	3
Number of Starters:	*100 (if more than 100 take part then please refer to Section XIV point 9)
Total prize money:	1.500€
Chart to be used:	1 (25% to winner)
Please specify prize money amount for each athlete placed 13 <sup>th</sup> and beyond: 5€	

**THIRD DAY : Thursday**

**DATE : 04/03/2021**

**COMPETITION No: YH-49**

**Time: 09:00H**

<b>Young horses 5 years old</b>	238.1.1 (Table A not against the clock)
Jump-off (if any)	No
Speed/Fixed time	350m/min.
Height of obstacles:	1,10/1,15m
Number of horses per athlete	3
Number of Starters:	*100 (if more than 100 take part then please refer to Section XIV point 9)
Total prize money:	500€
Chart to be used:	1 (25% to winner)
Please specify prize money amount for each athlete placed 13 <sup>th</sup> and beyond: 5€	

**COMPETITION No YH-50**

**Time: following**

<b>Young Horses 6 years old:</b>	274.2.5 (Two phases, 1 <sup>st</sup> not against the clock, 2 <sup>nd</sup> against the clock)
Jump-off (if any)	No
Speed/Fixed time	350m/min.
Height of obstacles:	1,20/1,25m
Number of horses per athlete	3
Maximum number of Starters:	*100 (if more than 100 take part then please refer to Section XIV point 9)
Total prize money	800€
Chart to be used:	1 (25% to winner)
Please specify prize money amount for athlete placed beyond 13 <sup>th</sup> : 5€	

**COMPETITION No: YH-51**

**Time: following**

<b>Young horses 7 years old</b>	274.2.5 (Two phases, 1 <sup>st</sup> not against the clock, 2 <sup>nd</sup> against the clock)
Jump-off (if any)	No
Speed/Fixed time	350m/min.
Height of obstacles:	1,30/1,35m
Number of horses per athlete	3
Number of Starters:	*100 (if more than 100 take part then please refer to Section XIV point 9)
Total prize money:	1.000€

Chart to be used: 1 (25% to winner)  
Please specify prize money amount for each athlete placed 13<sup>th</sup> and beyond: 5€

**COMPETITION No A-79 CSI4\***

**Time: following**

**Medium Tour:** 238.2.1 (Table A against the clock)  
Jump-off (if any) No  
Speed/Fixed time 375m/min.  
Height of obstacles: 1,35m  
Number of horses per athlete 3  
Maximum number of Starters: \*100 (if more than 100 take part then please refer to Section XIV point 9)  
Total prize money 2.500€  
Chart to be used: 1 (25% to winner)  
Please specify prize money amount for athlete placed beyond 13<sup>th</sup> : 10€

**COMPETITION No A-80 CSI4\***

**Time: following**

**Big Tour:** 238.2.1 (Table A against the clock)  
Jump-off (if any) No  
Speed/Fixed time 375m/min.  
Height of obstacles: 1,40m  
Number of horses per athlete 2  
Maximum number of Starters: \*100 (if more than 100 take part then please refer to Section XIV point 9)  
Total prize money 5.000€  
Chart to be used: 1 (25% to winner)  
Please specify prize money amount for athlete placed beyond 13<sup>th</sup> : 20€

**COMPETITION No A-81 CSI4\***

**Qualifier for the G.P**

**This Competition counts for the FEI Longines Ranking Group D**

**Qualifier for the G.P. and qualified the best 100 for Competition A-84**

**Big Tour:** 238.2.1 (Table A against the clock)  
Jump-off (if any) No  
Speed/Fixed time 375m/min.  
Height of obstacles: 1,45m  
Number of horses per athlete 1  
Maximum number of Starters: \*100 (if more than 100 take part then please refer to Section XIV point 9)  
Total prize money **25.700€**  
Chart to be used: 1 (25% to winner)  
Please specify prize money amount for athlete placed beyond 13<sup>th</sup> : 50€

**FOURTH DAY : Friday**

**DATE: 05/03/2021**

**COMPETITION No B-16 CSI 1\***

**Time: following**

**Small Tour :** 238.2.1 (Table A against the clock)  
Jump-off (if any) No  
Speed/Fixed time 350m/min.  
Height of obstacles: 1,10m  
Number of horses per athlete 3  
Maximum number of Starters: \*100 (if more than 100 take part then please refer to Section XIV point 9)  
Total prize money 600€  
Chart to be used: 1 (25% to winner)  
Please specify prize money amount for athlete placed beyond 13<sup>th</sup> : 5€

**COMPETITION No B-17 CSI 1\***

**Time: following**

**Small Tour:** 274.2.5 (Two phases, 1<sup>st</sup> not against the clock, 2<sup>nd</sup> against the clock)  
Jump-off (if any) No  
Speed/Fixed time 350m/min.  
Height of obstacles: 1,20m  
Number of horses per athlete 3  
Maximum number of Starters: \*100 (if more than 100 take part then please refer to Section XIV point 9)  
Total prize money 1.000€  
Chart to be used: 1 (25% to winner)  
Please specify prize money amount for athlete placed beyond 13<sup>th</sup> : 5€

**COMPETITION No A-82 CSI 4\***

**Time: following**

**Medium Tour:** 238.2.1 (Table A against the clock)  
Jump-off (if any) No  
Speed/Fixed time 375m/min.  
Height of obstacles: 1,30m  
Number of horses per athlete 3  
Maximum number of Starters: \*100 (if more than 100 take part then please refer to Section XIV point 9)  
Total prize money 2.000€  
Chart to be used: 1 (25% to winner)  
Please specify prize money amount for athlete placed beyond 13<sup>th</sup> : 10€

**COMPETITION No A-83 CSI 4\***

**Time: following**

**Big Tour:** 274.2.5 (Two phases, 1<sup>st</sup> not against the clock, 2<sup>nd</sup> against the clock)  
Jump-off (if any) No

Speed/Fixed time	375m/min.
Height of obstacles:	1,40m
Number of horses per athlete	2
Maximum number of Starters:	*100 (if more than 100 take part then please refer to Section XIV point 9)
Total prize money	5.000€
Chart to be used:	1 (25% to winner)
Please specify prize money amount for athlete placed beyond 13 <sup>th</sup> : 20€	

**COMPETITION No A-84 CSI 4\***

**Time: following**

**Qualifier for the G.P.**

**This Competition counts for the FEI Longines Ranking Group D**

**Open to 100 riders. The best 100 riders of Competition A-81**

**Should the overall number of riders entered be equal to/less than 100 no qualification system will be applied for the participation.**

**Qualifier for competition A-90 Grand Prix. The best riders, not already qualified in competition A-81, to reach the number of 60 starters (including automatically qualify for competition A-90 (should the overall number of riders entered in competition A-90 be equal to/less than 60 no qualification system will be applied for the participation in class A-90)**

<b>Big Tour:</b>	238.2.2 (Table A against the clock)
Jump-off (if any)	1 against the clock
Speed/Fixed time	375m/min.
Height of obstacles:	1,45/1,50m
Number of horses per athlete	1
Maximum number of Starters:	100
Total prize money	<b>25.700€</b>
Chart to be used:	1 (25% to winner)
Please specify prize money amount for athlete placed beyond 13 <sup>th</sup> : 50€	

**FIFTH DAY : Saturday**

**DATE: 06/03/2021**

**COMPETITION No B-18 CSI 1\***

**Time: 09:00H**

<b>Small Tour:</b>	269.1,2,3,5 (accumulator competition)
Jump-off (if any)	No
Speed/Fixed time	350m/min.
Height of obstacles:	1,10m
Number of horses per athlete	3
Maximum number of Starters:	*100 (if more than 100 take part then please refer to Section XIV point 9)
Total prize money	600€
Chart to be used:	1 (25% to winner)
Please specify prize money amount for athlete placed beyond 13 <sup>th</sup> : 5€	

**COMPETITION No B - 19 CSI 1 \***

**Time: following**

<b>Small Tour:</b>	238.2.2 (Table A against the clock with jump-off)
Jump-off (if any)	1 against the clock
Speed/Fixed time	350m/min.
Height of obstacles:	1,20m
Number of horses per athlete	3
Maximum number of Starters:	*100 (if more than 100 take part then please refer to Section XIV point 9)
Total prize money	1.000€
Chart to be used:	1 (25% to winner)
Please specify prize money amount for athlete placed beyond 13 <sup>th</sup> : 5€	

**COMPETITION No A-85 CSI 4 \***

**Time: following**

<b>Medium Tour:</b>	274.2.5 (Two phases, 1 <sup>st</sup> not against the clock, 2 <sup>nd</sup> against the clock)
Jump-off (if any)	No
Speed/Fixed time	375m/min.
Height of obstacles:	1,30m
Number of horses per athlete	3
Maximum number of Starters:	*100 (if more than 100 take part then please refer to Section XIV point 9)
Total prize money	2.000€
Chart to be used:	1 (25% to winner)
Please specify prize money amount for athlete placed beyond 13 <sup>th</sup> : 10€	

**COMPETITION No A-86 CSI 4 \***

**Time: following**

<b>Medium Tour :</b>	274.2.5 (Two phases, 1 <sup>st</sup> not against the clock, 2 <sup>nd</sup> against the clock)
Jump-off (if any)	No
Speed/Fixed time	375m/min.
Height of obstacles:	1,35m
Number of horses per athlete	3
Maximum number of Starters:	*100 (if more than 100 take part then please refer to Section XIV point 9)
Total prize money	2.500€
Chart to be used:	1 (25% to winner)
Please specify prize money amount for athlete placed beyond 13 <sup>th</sup> : 10€	



**COMPETITION No A-87 CSI 4\***

**Time: following**

**Big Tour:** 238.2.2 (Table A against the clock with jump off)

Competition to count for certificates of capability for the YR and Junior CH-EU Vilamoura 2021

Jump-off (if any) 1 against the clock  
Speed/Fixed time 375m/min.  
Height of obstacles: 1,40m  
Number of horses per athlete 1  
Maximum number of Starters: \*100 (if more than 100 take part then please refer to Section XIV point 9)  
Total prize money 12.000€  
Chart to be used: 1 (25% to winner)  
Please specify prize money amount for athlete placed beyond 13<sup>th</sup> : 20€

**SIXTH DAY : Sunday**

**DATE: 07/03/2021**

**COMPETITION No B-20 CSI 1\***

**Time: 09:00H**

**Small Tour:** 238.2.1 (Table A against the clock)  
Jump-off (if any) No  
Speed/Fixed time 350m/min.  
Height of obstacles: 1,10/1,15m  
Number of horses per athlete 3  
Maximum number of Starters: \*100 (if more than 100 take part then please refer to Section XIV point 9)  
Total prize money 600€  
Chart to be used: 1 (25% to winner)  
Please specify prize money amount for athlete placed beyond 13<sup>th</sup> : 5€

**COMPETITION No B-21 CSI 1\***

**Time: following**

**Small Tour:** 274.2.5 (Two phases, 1<sup>st</sup> not against the clock, 2<sup>nd</sup> against the clock)  
Jump-off (if any) No  
Speed/Fixed time 350m/min.  
Height of obstacles: 1,20m  
Number of horses per athlete 3  
Maximum number of Starters: \*100 (if more than 100 take part then please refer to Section XIV point 9)  
Total prize money 1.000€  
Chart to be used: 1 (25% to winner)  
Please specify prize money amount for athlete placed beyond 13<sup>th</sup> : 5€

**COMPETITION No A-88 CSI 4\***

**Time: following**

<b>Medium Tour:</b>	269.1,2,3,5 (accumulator competition)
Jump-off (if any)	No
Speed/Fixed time	375m/min.
Height of obstacles:	1,30m
Number of horses per athlete	3
Maximum number of Starters:	*100 (if more than 100 take part then please refer to Section XIV point 9)
Total prize money	2.000€
Chart to be used:	1 (25% to winner)
Please specify prize money amount for athlete placed beyond 13 <sup>th</sup> : 10€	

**COMPETITION No A-89 CSI 4\***

**Time: following**

**This competition counts for the Longines Ranking group D**

<b>BigTour :</b>	238.2.2 (Table A against the clock with Jump-off)
Jump-off (if any)	1 against the clock
Speed/Fixed time	375m/min.
Height of obstacles:	1,45/50m
Number of horses per athlete	1
Maximum number of Starters:	*100 (if more than 100 take part then please refer to Section XIV point 9)
Total prize money	<b>30.000€</b>
Chart to be used:	1 (25% to winner)
Please specify prize money amount for athlete placed beyond 13 <sup>th</sup> : 40€	

**COMPETITION No A-89 CSI 4\***

**Time: following**

**This Competition counts for the FEI Longines Ranking Group B**

Big Tour: Grand Prix	238.2.2 (Table A against the clock with jump off)
+ FEI Olympic Regulations Art. 632.6.1 / JRs Annex VIII, Art. 4.11 / JRs Annex VIII, Art. 3.11	
Jump-off (if any)	1 against the clock
Speed/Fixed time	375m/min.
Height of obstacles:	1,50m (2 verticals of 1m60 compulsory)
Number of horses per athlete	1
Maximum number of Starters:	50

This GP is open to 50 riders of the CSI qualified under the following conditions:

The following Athletes (not Athlete/Horse combinations) are automatically qualified for the Grand Prix at CSI Events, if present:

- 261.4.2.1. The winner of that Event's Grand Prix the previous year;
- 261.4.2.2. The current National Jumping Champion of the host country;
- 261.4.2.3. The individual Jumping medal winners of the last Olympic and Pan-American Games, the last World and Continental Championships and the winner of the last FEI World Cup™ Jumping Final.

Athletes qualified for the Grand Prix :

The best 35 Athletes in competition n° A-80

The best Athletes in competition n° 83, not qualified in competition A-80 (including prequalified riders) to reach a maximum of 50.

Qualified athletes who decide not to start until 4 hours before the start of the competition, will be replaced with the following placed athletes in the class in which they got qualified

**All athletes qualified for the Grand Prix, including those automatically qualified must complete, with their Grand Prix horse, the initial round of at least one FEI competition among those listed in JRs Art. 261.4.4 prior to the Grand Prix.**

Total prize money **LR 100.000€**

Chart to be used: 1 (25% to winner)

Please specify prize money amount for athlete placed beyond 13<sup>th</sup>: 100€

**Qualifier for Tokyo Olympic Games in 2021 / CH-EU-S 2021\* / CH-M-S 2022 (Certificates of Capability)**

*\*Final confirmation on the holding of these Championships to be provided in early 2021.*

**Counting for Tokyo Olympic Games 2021 / CH-EU-S 2021**

*This competition will count as a competition where athletes and horses can achieve the Minimum Eligibility Requirements (MER) providing the course meets the following specifications: consist of at least 12 obstacles which may vary in height between 1.40m and 1.60m. The spread obstacles must have spreads of between 1.50m to 2.00m (2.20m for the triple bar). At least two vertical obstacles must be provided with a minimum height of 1.60m.*

**Counting for CH-M-S 2022**

*This competition will count as a competition where athletes and horses can achieve the Minimum Eligibility Requirements (MER) providing the course meets the following specifications: consist of at least 12 obstacles which may vary in height between 1.40m and 1.60m. The spread obstacles must have spreads of between 1.50m to 2.00m (2.20m for the triple bar). At least two vertical obstacles must be provided with a minimum height of 1.60m. In addition to these requirements the competition must comply with the following **mandatory requirements** to count for the CH-M-S 2022:*

- The first obstacle may be a vertical minimum height 1m45 or an oxer minimum height 1m40 for the front pole and 1m45 for the back pole;*
- One set of planks on flat cups;*
- Triple bar minimum 1m80 spread and 1m50 height;*
- One wall or gate;*
- One narrow vertical or spread obstacle with frontal width between 2m50 to 3m00;*
- Minimum one triple and one double combination (three doubles are not allowed);*
- The triple combination must have at least one oxer minimum 1m50 height and 1m50 spread, and at least one one-stride distance either from A to B or from B to C;*
- Approximately 50% of the efforts must be vertical obstacles and 50% must be spread obstacles (e.g. oxer, triple bar, Swedish oxer, narrow oxer etc.). Nevertheless, no more than 55% of the efforts may be vertical and no more than 60% of the efforts may be spread obstacles, including the water jump if there is one;*
- Two verticals (other than the wall) must have a height of 1m60;*
- At least two spread obstacles with minimum height of 1m50 and minimum spread of 1m60;*
- Two liverpool obstacles, one vertical and one spread. If the course includes a water jump, a minimum of one liverpool will be allowed;*
- Bend or straight line of up to six strides between two single obstacles;*
- Depth of cups: minimum 50% of cups must have a depth of 18mm; depth of cups maximum 20mm if poles are 350-400cm long;*
- Minimum length of course 400 meters with a minimum speed of 375m/min;*
- The course will include minimum 12 and maximum 14 obstacles.*

*The Foreign Judge is responsible for ensuring that the course is built to the required dimensions and must confirm to the FEI through the Foreign Judge Report whether or not the course requirements have been met and must upload/sent the course plan including all heights and dimensions following the Event.*

## **X. FACILITIES OFFERED**

### **1. ATHLETES**

#### **Accommodation**

Hotel:

Address:

Telephone:

At the expense of: The Organiser ☐ or Athletes ☒

Accommodated (bed and breakfast) from to

#### **Meals**

At the expense of: The Organiser ☐ or Athletes ☒

Meals provided from to .

### **2. GROOMS**

#### **Accommodation.**

Requests for accommodation must be sent with entries.

At the expense of: The Organiser ☐ or Athletes ☒

Accommodated (bed and breakfast) from to

#### **Meals.**

At the expense of: The Organiser ☐ or Athletes ☒

Meals provided from to .

**NB: If applicable, Organiser must provide proper sanitary conditions. The showering facilities should be sufficient for both male and female grooms with hot and cold water. Shower facilities as well as restrooms should at all times be in a state of cleanliness.**

## XI. LOGISTICAL/ADMINISTRATIVE/TECHNICAL INFORMATION

### 1. DRAW

List of Draws, time, date and location: The draw will take place in the show office the day before the competition

### 2. COMPETITION ARENA(S)

Dimensions:	120m x 75m	Type of Footing:	Sand (Otto Sport)
Dimensions:	110m x 80m	Type of Footing:	Sand (Otto Sport)
Dimensions:	85m x 70m	Type of Footing:	Grass

### 3. PRACTICE ARENA(S)

Dimensions:	90m x 60m	Type of Footing:	Sand (Otto Sport)
Dimensions:	30m x 50m	Type of Footing:	Sand (Otto Sport)
Dimensions:	80m x 70m	Type of Footing:	Sand (Otto Sport)

Riders must have the possibility to exercise their horses in an exercise area under a Steward's supervision at least 30 minutes per day outside of the competition warm-up period. Details of opening times of exercise areas must be included in the timetable.

### 4. STABLES

Size of boxes 3 m x 3 m (minimum 3m x 3m+20% 3m x 4m)

### 5. SAFETY CUPS

Name of Manufacturer: Cardinall & Rothenberger, GmbH

### 6. TIMING DEVICE

Name of Manufacturer: IC Contro  
Model: ATU-X  
FEI Report number: 22100054A

### 7. SCORING/TIMING PROVIDER

Will you use a FEI Certified Service Provider to manage the scoring and timing at your Event?

(The list of certified Service Providers is available here: <https://inside.fei.org/fei/your-role/it-services/it-providers/list>)

Yes ☒

Name of the company: Equipe AB / Clube Hipico de Vilamoura  
FEI Certified Service Provider ID number: GU12Y101AKSCH / GU1D101IV  
Contact person at Event  
Name: Maria, Matos  
FEI ID number: 10093689  
Contact email: (compulsory)

Please fill in Annex XV – FEI Entry System for the Timing Provider

The FEI may require to be provided with real time results data feed of your Events according

to FEI requirements; in this case you and your provider will be informed accordingly.

**8. OTHER TECHNOLOGY/SERVICE PROVIDER(S)**

Will you use other technology/service provider(s) at your event?

No ☒

**9. PRIZE GIVING CEREMONY**

The owner of the winning horse/pony must be invited to the prize giving ceremony for the Grand Prix, if present at the event.

The number of athletes required to present themselves for the prize-giving ceremony of each competition is 5.

All Prize Giving Ceremonies must strictly follow the [Covid-19 guidelines for Prize giving protocols and media activities.](#)

**10. ADVERTISING ON ATHLETES AND HORSES**

At CSI events, and all competitions except for the Nations Cup, athletes are authorised to carry the logo of their personal sponsor in accordance with the articles 256.3 and 257.3 of the FEI Jumping Rules.

The Chief Steward will check that the advertising on athletes and horses complies with these Articles.

**11. TICKETING**

Are you selling tickets for spectators to attend your event: Yes ☐ No ☒

Name of your ticketing provider:

Web address to buy ticket:

**12. BETTING**

Betting will be authorised by the Organiser: Yes ☐ No ☒

**13. TRANSPORT REIMBURSEMENT HORSES / PONIES**

Transport expenses to be paid by:

The Organiser ☐ at \_\_\_\_\_ per km.

The Athlete ☒

**14. WELCOME**

The time and date of arrival of athletes, horses and their means of transport must be given to the Organiser in order to facilitate their arrival.

**15. LOCAL TRANSPORTATION - ARRANGEMENTS FROM HOTEL TO SHOWGROUNDS**

Walking distance ☐

Organiser Shuttle Service ☐

Public Transport ☐ to be paid by the Organiser ☐ / the Athlete ☒

If paid by Athlete approximate cost per round trip:

Other:

**16. ENTRY RIGHT TO SHOWGROUNDS/ACCREDITED PERSONS**

Entry right to the stable area according to FEI Veterinary Regulations Articles 1008-1009.

NUMBER OF ACCREDITED PERSONS:

Athlete: 1

Partner: 1

Groom: 1

Horse Owner: 2 two (2) accreditations per horse acc. to FEI-Passport

**17. SUSTAINABILITY**

Please consider the environment when organising an FEI Event. Please find useful information on FEI Sustainability here: <http://inside.fei.org/fei/your-role/organisers/handbook>

## **XII. VETERINARY MATTERS**

### **1. CUSTOMS FORMALITIES**

Contact details for Customs Formalities:

Name:  
Address:  
Telephone:  
Fax:  
Email:  
Opening hours:

### **2. HEALTH REQUIREMENTS**

#### **GENERAL**

In accordance with the FEI Code of Conduct for the Welfare of the Horse it is imperative that all Horses at FEI Events are physically fit and free from infectious disease before being allowed to compete.

#### **ENTRY OF HORSES**

Required health tests and vaccinations:  
Quarantine period:  
Specimen Import Licence applied:

For questions or problems, please contact your Government Veterinary Services.

### **3. NATIONAL REQUIREMENTS**

If applicable please provide:

### **4. PONIES**

FEI Veterinary Regulations, Chapter IX and Annex IX:  
For all Pony Events, Ponies must be available for Pony Measurement if requested by the FEI.

### **5. INJURY SURVEILLANCE**

FEI Veterinary Regulations, Chapter VIII:  
Horses participating in FEI Events are subject to injury surveillance protocols; and in the event of fatality, a post mortem examination.

### **6. TRANSPORT OF HORSES**

Horses must be fit to travel and be transported in suitable vehicles for the transport of horses. Any government requirements for disease testing and control must be requested well in advance, to ensure that the horse is in compliance by the time of arrival at the border of the country where the Event is taking place. Athletes, or their representatives, have the responsibility to comply with national legislation in both their country of origin and the host nation of the Event. Where necessary athletes must contact local government authorities or veterinary advisors for information regarding animal health requirements and transport legislation. Within the European Union (EU), this includes EU Council Regulation (EC) No 1/2005 concerning the protection of animals during transport within the Member States of the EU.



## 7. VENUE ARRIVAL INFORMATION & FITNESS TO COMPETE

### 7.1. PASSPORTS. FEI General Regulations Article 137

**For all issues relating to FEI Horse Passports/FEI Recognition Cards please contact your National Federation.**

All Horses competing at FEI Events must be registered with the FEI.

FEI Passports or FEI Recognition Cards (for those Horses with a national passport approved by the FEI) are compulsory for FEI Events.

NB: Horses entered in CIMs and in CSIP in their country of residence are not required to have an FEI Passport or FEI Recognition Card but must be properly registered with the FEI and identifiable (GRs 137.2).

Athletes who do not present a Horse's Passport and/or Recognition Card, or one that is not correctly validated or fail to meet other passport requirements will be **subject to Sanctions in accordance with Annex VI of the FEI Veterinary Regulations** and may not be allowed to compete.

**NB** for Horses permanently resident in a Member State of the European Union: all Horses must have a national EU passport in compliance with EU Regulations to which a FEI Recognition card is applied. The exception to this being Horses in possession of an FEI passport which has been continually revalidated without interruption.

### 7.2. VACCINATIONS - EQUINE INFLUENZA. FEI Veterinary Regulations Article 1003

Horses competing at FEI Events must comply with the requirements for Equine Influenza vaccination in accordance with the Veterinary Regulations and as summarised below.

VACCINATION	PROTOCOL	ELIGIBILITY TO ENTER VENUE
Primary Course	1 <sup>st</sup> Vaccination: day 0 2 <sup>nd</sup> Vaccination: day 21-92	May compete 7 days after the 2 <sup>nd</sup> Vaccination
First Booster	Within 7 months of the 2 <sup>nd</sup> vaccination of the Primary Course	May compete for 6 months +21 days after the 2 <sup>nd</sup> vaccination of the Primary Course Must not compete in the 7 days after receiving a vaccination
Boosters	<b>MINIMUM:</b> within one year of previous booster vaccination <b>IF COMPETING:</b> must be in the 6 months +21 days of the booster previous vaccination	Must have been vaccinated within 6 months +21 days before arriving at the Event Must not compete in the 7 days after receiving a vaccination

All FEI registered Horses intending to compete at FEI Events (including CIMs) must be vaccinated against Equine Influenza in accordance with these VRs. The exception being if the applicable domestic legislation prevents the use of Equine Influenza vaccines within the relevant territory

### 7.3. EXAMINATION ON ARRIVAL. FEI Veterinary Regulations Article 1031

On arrival at an Event venue, all Horses must undergo an examination by a veterinarian to confirm their identification from their passport and micro-chip ID (where present), their vaccination status and general health. To protect all horses attending events, any Horse with a

questionable health status concerning vaccination, disease or other concerns, must be stabled within the isolation facilities provided by the Organising Committee pending a decision on entering the venue.

**7.4. HORSE INSPECTIONS. FEI Veterinary Regulations Articles 1034-1042**

All Horses will be assessed for their fitness to compete during the Horse Inspection. Any Horse demonstrating questionable fitness may be referred to the Holding Box for further veterinary examination. Horses not deemed fit to compete by the Inspection Panel will not be permitted to compete.

**7.5. LIMB SENSITIVITY EXAMINATION. FEI Veterinary Regulations Articles 1048-1053**

All Horses are subject to examination under the protocol for abnormal limb sensitivity throughout the period of an Event. For Jumping that includes, but is not limited to, between rounds and before the Jump Off. Horses may be examined once or on multiple occasions during the Period of an Event.

Horses may be selected for examination under the protocol randomly or they may be targeted. All Horses selected to be tested must submit promptly to the examination or are subject to immediate disqualification. There is no obligation to examine any specific number of Horses at an Event.

**8. EQUINE ANTI-DOPING AND CONTROLLED MEDICATION PROGRAMME (EADCMP). FEI VETERINARY REGULATIONS, CHAPTER VII**

**8.1. SAMPLING. FEI VETERINARY REGULATIONS Chapter VII**

All horses competing at FEI Events may be subject to sampling for the presence of Prohibited Substances in accordance with the Anti-Doping and Controlled Medication Regulations (EADCMRs). Horses may be selected for sampling in accordance with obligatory testing, targeted or random sampling procedures. Refer to FEI Financial Charges for details of fees relating to Equine and Human Anti-Doping program (EADCMP), which OCs/NFs have the right to charge to the athlete (applicable for all FEI events worldwide).

**8.2. ELECTIVE TESTING. FEI VETERINARY REGULATIONS ARTICLES 1058**

Elective Testing may be carried out prior to an Event to check for the presence of Prohibited Substances. Please refer to <https://inside.fei.org/fei/cleansport/horses> for information and details.

### XIII. HUMAN ANTI-DOPING

Athletes can be tested at any FEI Event, by the FEI or by other Anti-Doping Organisations with Testing jurisdiction. Organisers will have the responsibility to provide facilities and staff/volunteers to facilitate such Testing if requested by the FEI as outlined in article 22.3 of the FEI's Anti-doping Rules for Human Athletes (ADRHA).

The ADRHA rules are published on the FEI website at <http://inside.fei.org/content/anti-doping-rules>.

### XIV. ADDITIONAL INFORMATION

#### 1. THE FEI POLICY FOR ENHANCED COMPETITION SAFETY DURING THE COVID-19 PANDEMIC

The FEI Policy for Enhanced Competition Safety during the Covid-19 Pandemic ("Policy") (<https://inside.fei.org/system/files/FEI%20Policy%20for%20Enhanced%20Competition%20Safety%20during%20the%20Covid-19%20Pandemic%20-%20Effective%201%20July%202020%20-%20Updated%2012%20October%202020.pdf>) is mandatory and applies for any FEI Event taking place **as of 1 July 2020**. The Policy has been developed based on currently accepted best practices by the WHO and US Center for Disease Control (CDC) and will be continually reviewed and updated as more information becomes available. It is not intended to replace the applicable guidance and policies from domestic government and health authorities, but to supplement their recommendations with sport specific considerations.

The OC shall submit the risk assessment and mitigation plan (including name and contact details of the person in charge) to the FEI as an annex to the Event Schedule, **at the latest ten (10) working days before the event's deadline for Definite Entries**.

Events for which the FEI has not received the documented risk assessment and mitigation measures plan in accordance with article 2.1.g) of the Policy **will be removed from the FEI calendar** in accordance with Article 112.3 of the FEI General Regulations.

#### **ASSUMPTION OF RISK / WAIVER OF LIABILITY**

In consideration of being allowed to participate in the Event and related activities, all Participants (as defined in the Policy) acknowledge, appreciate, and agree that:

1. Participation includes possible exposure to and illness from infectious diseases including but not limited to COVID-19. While particular rules and personal discipline may reduce this risk, the risk of serious illness and death does exist; and,
2. The Participants knowingly and freely assume all such risks, both known and unknown, even if arising from the negligence of the OC or others, and assume full responsibility for their participation; and,
3. The Participants willingly agree to comply with the stated and customary terms and conditions for participation as regards protection against infectious diseases. If, however, a Participant observes any unusual or significant hazard during his/her presence or participation, the Participant will remove himself/herself from participation and bring such to the attention of the nearest official immediately; and,
4. The Participants, for themselves and on behalf of their heirs, assigns, personal representatives and next of kin, HEREBY RELEASE AND HOLD HARMLESS THE OC AND THE FEI, their officers, officials, agents, and/or employees, other participants,

sponsoring agencies, sponsors, advertisers, and if applicable, owners and lessors of premises used to conduct the event ("RELEASEES"), WITH RESPECT TO ANY AND ALL ILLNESS, DISABILITY, DEATH, or loss or damage to person or property, WHETHER ARISING FROM THE NEGLIGENCE OF RELEASEES OR OTHERWISE, to the fullest extent permitted by law.

The Participants confirm to have read this release of liability and assumption of risk agreement, fully understand its terms, understand that they have given up substantial rights.

## **2. INSURANCES AND NATIONAL REQUIREMENTS**

Equestrian sports involve inherent dangerous risks. To the greatest extent permitted by law, the FEI and the FEI Event Organiser shall NOT be liable for any damages relating to loss of property or injury of any kind to Athletes, Owners, Support Personnel or Horses at or in connection with an FEI Event and the FEI expressly excludes all such liability.

### **2.1. ATHLETES, OWNERS AND SUPPORT PERSONNEL**

#### **2.1.1. Personal Accident and Health Insurance**

It is your responsibility as an Athlete/Owner/ Support Personnel to ensure that you have adequate personal accident insurance in place to cover your participation at FEI Events and in particular to insure against any personal injury or medical expenses arising from an accident, injury or illness which may occur at a FEI Event.

You should check with your National Federation to confirm if your National Federation's insurance policy (if any) covers personal accidents and/or illnesses which may occur when you are attending/participating in FEI Events.

If your National Federation does not have a personal accident/health insurance policy or if the National Federation's insurance policy does not cover personal accident or health claims, then you should obtain your own personal accident and health insurance policy to cover your attendance/participation at FEI Events.

#### **2.1.2. Personal Property Insurance**

You should also ensure that you are insured against property loss, theft or damage which may occur at an FEI Event.

Again, the advice is to check with your National Federation to confirm if they have an insurance policy in place which would cover you in case of such property loss, theft or damage. If not, then you should obtain your own personal property insurance to cover such situations.

#### **2.1.3. Press Equipment**

Press equipment and other items left in the Press workroom, Press lockers, the Press Tribune or anywhere on the showgrounds are left entirely at the owner's risk. The Organising Committee does not accept any responsibility for any loss or damage to such equipment or items. Members of the Press are advised not to leave any equipment or personal items unattended.

### **2.2. ATHLETES AND OWNERS**

#### **2.2.1. Third Party Liability Insurance**

As an Athlete/Owner you are personally responsible for damages to third parties caused by you, your employees, Support Personnel, your agents or your Horses. You are, therefore,

strongly advised to take out third-party liability insurance providing full coverage in relation to FEI Events at home and abroad, and to keep the policy up to date.

The FEI and the Organiser will NOT be responsible for any damage caused to third parties by you, your employees, Support Personnel, your agents or your Horses.

### **2.2.2. Additional Liability Information**

Space for organiser to include reference to National Laws when necessary

### **2.2.3. Horse Insurance**

As an Owner you should ensure that your Horses are adequately insured against any injuries or illnesses they may sustain while participating at a FEI Event.

Space for organiser to include reference to National Laws when necessary

## **3. PROTESTS/APPEALS**

To be valid, all Protests and Appeals must be made in writing and accompanied by a deposit of CHF 150.- or equivalent.

Protest and appeal forms are available on the FEI website:

Protests: <http://inside.fei.org/sites/default/files/FEI%20Protest%20Form.pdf>

Appeals: <http://inside.fei.org/sites/default/files/FEI%20Appeal%20Form.pdf>

## **4. SCHOOLING DURING COMPETITIONS**

Athletes wishing to school during speed competitions (Table A and Table C) must inform the OC before these competitions begin. These athletes will start first in these competitions.

## **5. STEWARDING**

- If an athlete is uncertain as to whether the boots he/she intends to use during an event are allowed, he/she or his/her representative should show the boots to the Chief Steward for his/her opinion before the boots are used in training or in competition.
- In addition, athletes are to be made aware that hind boots must be removed and placed again on the horse's legs in the presence of a Steward while in the warm-up arena prior to entering the competition arena for certain competitions. (If bandages are used in place of boots, athletes are not required to remove the bandages in the warm-up arena.) This procedure is compulsory for competitions for which boot and bandage control is mandatory, that is the Nations Cup, Grand Prix, and the competition with the highest prize money, and is at the discretion of the Chief Steward for other competitions.
- As an alternative to carrying out this procedure at the time designated by the Steward an athlete may ask his/her groom to take the boots to the in-gate and place them on the horse's legs in front of the Steward prior to the combination entering the arena.

- The Steward has the authority to intervene if a boot is deemed excessively tight by instructing that the boot be removed and put on again correctly. *[Stewards are to note that it is normal for a horse's gait to be somewhat affected immediately after boots have been removed and re-placed.]* If an athlete or his/her groom refuses to remove and re-place the boot(s) when instructed to do so by the Steward, a Yellow Warning Card will be issued to the athlete in question.
- If it is deemed impossible or unsafe to remove the hind boots in the warm-up arena prior to the combination entering the competition arena, due to an extremely excited or nervous horse, the boots of the horse in question are to be removed by the athlete/groom following the athlete's round upon leaving the arena and inspected by the Steward. This inspection may be carried out during the boot and bandage control if the boot and bandage control is carried out for the competition in question.
- This procedure does not replace boot and bandage control after completion of an athlete's round for competitions for which boot and bandage control is mandatory (refer to JRs Art. 244.1).

## **6. DISPUTES**

In the event of any discussion concerning the interpretation of the schedule (in translated languages), the English version will be decisive.

## **7. MODIFICATION TO SCHEDULE**

In exceptional circumstances, together with the approval of Chefs d'Equipe, host NF delegate, if any, and the Ground Jury, the Organiser may change the schedule in order to clarify any matter arising from an omission or due to unforeseen circumstances. Any such changes must be notified to all athletes and officials as soon as possible and they must be reported to the FEI Secretary General by the Technical Delegate, the President of the Ground Jury or the Foreign Judge, as applicable.

## **8. ADDITIONAL INFORMATION FROM THE OC**

Space for organiser to include any additional information
---

# FEI APPROVED SCHEDULE

## Vilamoura 25 January – 07 March 2021



### Age of Athletes and Horses according to the Event's Category

Event's Category	Age of Athletes	Age of Horses
<b>Olympic Games/WEG</b>	As of 18 <sup>th</sup> year	Min 9 y.o.
<b>Continental Championships Senior</b>	As of 18 <sup>th</sup> year	Min 8 y.o.
<b>Regional Championships/Games</b>	As of 18 <sup>th</sup> year As of 16 <sup>th</sup> year if height of obstacles max. 1.40m (JRs Annex IX, Art. 6.1)	Min. 8 y.o. Min. 7 y.o. if height of obstacles max. 1.40m (JRs Art. 254.1.1)
<b>World Cup Final</b>	As of 18 <sup>th</sup> year	Min. 9 y.o.
<b>Nations Cup Final</b>	As of 18 <sup>th</sup> year	Min. 8 y.o.
<b>CSI-W1*-5*/CSIO-W1*-5*</b> Grand Prix, World Cup, Nations Cup, Power and Skill, Derby or Competition with the highest prize money Other Competitions Other Competitions if height max. 1.40m Other Competitions if height max. 1.30m	As of 18 <sup>th</sup> year As of 16 <sup>th</sup> year with permission of their NF As of 14 <sup>th</sup> year " " As of 12 <sup>th</sup> year " "	Min. 7 y.o. Min. 7 y.o. Min. 7 y.o. Min. 7 y.o.
<b>CSI3*-5*/CSIO3*-5*</b> Grand Prix, Nations Cup, Power and Skill, Derby or Competition with the highest prize money Other Competitions Other Competitions if height max. 1.40m Other Competitions if height max. 1.30m	As of 18 <sup>th</sup> year As of 16 <sup>th</sup> year with permission of their NF As of 14 <sup>th</sup> year " " As of 12 <sup>th</sup> year " "	Min. 7 y.o.
<b>CSI2*</b> Power and Skill or Derby Grand Prix Other Competitions if height max. 1.40m Other Competitions if height max. 1.30m	As of 18 <sup>th</sup> year As of 16 <sup>th</sup> year with permission of their NF As of 14 <sup>th</sup> year " " As of 12 <sup>th</sup> year " "	Min. 6 y.o.
<b>CSIO2*</b> Nations Cup, Grand Prix, Power and Skill, Derby or Competition with the highest prize money Other Competitions Other Competitions if height max. 1.40m Other Competitions if height max. 1.30m	As of 18 <sup>th</sup> year As of 16 <sup>th</sup> year with permission of their NF As of 14 <sup>th</sup> year " " As of 12 <sup>th</sup> year " "	Min. 6 y.o. *
<b>CSI1*</b> Power and Skill or Derby Grand Prix / Other Competitions Other Competitions if height max. 1.30m	As of 18 <sup>th</sup> year As of 14 <sup>th</sup> year with permission of their NF As of 12 <sup>th</sup> year " "	Min. 6 y.o.
<b>CSIO1*</b> Nations Cup, Grand Prix, Power and Skill, Derby or Competition with the highest prize money Other Competitions Other Competitions if height max. 1.40m Other Competitions if height max. 1.30m	As of 18 <sup>th</sup> year As of 16 <sup>th</sup> year with permission of their NF As of 14 <sup>th</sup> year " " As of 12 <sup>th</sup> year " "	Min. 6 y.o.
<b>CH-Y</b>	As of 16 <sup>th</sup> year to end 21 <sup>st</sup> year	Min. 7 y.o.
<b>CSI/CSIO-Y</b>	As of 16 <sup>th</sup> year to end 21 <sup>st</sup> year	Min. 7 y.o.
<b>CH-J</b>	As of 14 <sup>th</sup> year to end 18 <sup>th</sup> year	Min. 7 y.o.
<b>CSI/CSIO-J</b>	As of 14 <sup>th</sup> year to end 18 <sup>th</sup> year	Min. 6 y.o.
<b>CSI/CSIO-Ch/CH-Ch</b>	As of 12 <sup>th</sup> year to end 14 <sup>th</sup> year	Min. 6 y.o.
<b>CSI/CSIO-P/CH-P</b>	As of 12 <sup>th</sup> year to end 16 <sup>th</sup> year Ponies must be registered as ponies with FEI	Min. 6 y.o.
<b>CSIU-25</b>	As of 16 <sup>th</sup> year to end 25 <sup>th</sup> year for all CSIU-25 comp. As of 14 <sup>th</sup> year if height max. 1.40m (to end 25 <sup>th</sup> year)	Min. 7 y.o.
<b>CSIV</b>	As of 45 <sup>th</sup> year	Min. 6 y.o.
<b>CSIAm</b>	As of 12 <sup>th</sup> year until end of 13 <sup>th</sup> year if competition height is max. 1.30 m; as of 14 <sup>th</sup> year if height exceeds 1.30 m.	Min. 6 y.o.
<b>CSIYH</b>	Per Art. 255.2	Min. 5 y.o. – Max. 8 y.o.
<b>CH-M-YH-S</b>	As of 18 <sup>th</sup> year or 16 year for athletes qualified with the same horse	5 y.o. / 6 y.o. / 7 y.o.

\* Art. 254.1.1: Horses entered for CSIO2\* Events at which the Nations Cup is built to the dimensions set forth in JRs Art. 264.3 for 2\* Events must be at least 6 years old; Horses entered for CSIO2\* Events at which the Nations Cup is built to the dimensions set forth in JRs Art. 264.3 for 3\* Events or higher must be at least 7 years old.







**DEDUCTIONS FROM PRIZE MONEY AT COMPETITIONS:**

Full details of any deductions from prize money must be outlined in the schedule. This includes government taxes. If it is necessary for Organisers to deduct such taxes, they must provide participants with an official form indicating the amount of tax deducted.

**The tax form must be provided to the athletes upon arrival and returned to the Organiser prior to departing.**

Non Resident Riders (Riders without Portuguese Fiscal ID):

With or without legal document (invoice or receipt) as individual entities or companies. Retention of 25% is made on the amount paid.

Due to the existence of different taxations, the prize values presented will be the gross value, before taxation.

**IMPORTANT**

**The total amount of prize money shown for each Competition in the schedule must be distributed. (FEI General Regulations articles 127 and 128)**

For details of the prize money breakdown for each competition please refer to the tables at the end of this document; the Organiser must specify which of the two (2) tables will be used. The total prize money for the Competition must be distributed among the first twelve (12) placed athletes.

The Organiser must provide additional created prizes for athletes placed beyond twelfth (12<sup>th</sup>) place. The minimum amount for each of these additional prizes, for athletes placed from thirteenth (13<sup>th</sup>) to last place, must be clearly specified in the approved schedule and not exceed the prize money of the athlete placed twelfth (12<sup>th</sup>)

**10. MAXIMUM NUMBER OF STARTERS PER COMPETITION**

**\*Annex VI FEI Jumping Rules:**

Maximum 100 starters per Competition other than the GP. If more than 100 starters are declared, the OC must provide the following percentages of additional prize money for every ten declared starters, up to 120 declared starters:

- 101 to 110 declared starters: the OC must provide 133% of the original Competition prize money, which is to be distributed among the 16 best placed athletes in the Competition according to the prize money distribution chart I or II. The additional prize money provided by the OC is not taken into consideration with regard to the overall prize money that determines the star level of the Event or the Longines Ranking point group of the Competition, if applicable.
- 111 to 120 declared starters: the OC must provide 166% of the original Competition prize money, which is to be distributed among the 20 best placed athletes in the Competition according to the prize money distribution chart I or II. The additional prize money provided by the OC is not taken into consideration with regard to the overall prize money that determines the star level of the Event or the Longines Ranking point group of the Competition, if applicable.

If more than 120 starters are declared, the OC must split the Competition into two groups and provide 200% of the original Competition prize money which is to be divided equally between the two groups. The additional prize money provided by the OC is not taken into consideration with

regard to the overall prize money that determines the star level of the Event or the Longines Ranking point group of the Competition, if applicable.

OCs may apply either of the following methods for splitting the Competition:

The competition is split into two groups before it starts. There may be athletes with multiple horses in each group but all horses of any one athlete must be in the same group. If it is not possible to have two groups of equal size there may be a different number of starters in each group;

OR

The competition is run as one single competition and split afterward into two groups and the classification established as follows: the athlete with the best score is the winner of the first group, the athlete with the second best score is the winner of the second group and so on until prizes have been allocated to 25% of the total number of starters. *NB: In this case separate results must be sent to the FEI for each of the two groups, e.g. results for Competition 1a and for Competition 1b.*

In both cases above each group must offer the same amount of prize money. For the avoidance of doubt, it is the number of declared starters in the Competition, not the final number of starters, that determines whether the Competition must be split.

If there are more than 200 declared starters, the OC must split the Competition into three groups and provide the same percentages of additional prize money as indicated above (100% of original Competition prize money to be provided for each of the three groups if each group has 100 or fewer starters; 133% of original prize money to be provided for each group if any of the three groups has 101-110 starters; 166% of original prize money to be provided for each if any of the three groups has 111-120 starters).

<sup>3</sup> For CSI-W Events with a Grand Prix Competition in addition to the FEI World Cup™ competitions, the minimum prize money requirements indicated above for the Grand Prix apply only to the FEI World Cup™ Competition as it has the status of a Grand Prix; the Grand Prix Competition at such Events cannot offer more prize money than the prize money offered for the FEI World Cup™ Competition. Refer to the FEI Jumping World Cup™ rules for details relating to date of implementation of this rule at CSI-W Events.

## **11. GLOSSARY**

### **\*Glossary FEI Jumping Rules:**

#### **Fees:**

- Compulsory Fee: Compulsory Fees are fees that may be charged by the OC for costs/services not included in the Entry Fee. Compulsory Fees, if charged, must be paid by the Athletes concerned as outlined below. Only the following Compulsory Fees may be charged by the OC, providing full details of the amount to be charged is included in the Schedule and approved by the FEI:
  - NF fee if applicable
  - NF medication control programme fee if applicable
  - FEI EADCMR fee if applicable (OC to indicate in the Schedule if the EADCMR fee is included in the Entry Fee or not)
  - Fee for health/customs-related documents for Horses if these have been requested by the Athlete.
  - Fee for manure disposal (maximum € 40 per horse per Event)
  - Fee for lorry parking if applicable (The fee indicated in the Schedule may only be charged per lorry not per Athlete.)
  - Fee for electric hook-up for lorry (The fee indicated in the Schedule may only be charged per lorry, not per Athlete.)
- Discretionary Fee: Discretionary Fees are fees that may be charged for optional commodities/services that may be purchased by an Athlete if he so chooses and that do not affect the equity of the Athlete's right to compete at the Event or the well-being of the Horse, such as:

- VIP or premium parking
  - VIP table
  - Extra box for tack or for non-competing Horse
  - Extra bedding and/or fodder (details to be included e.g. shavings, straw, hay)
  - Premium stabling (all stabling at the Event must meet minimum FEI requirements)
- Entry Fee: The Entry Fee is the fee charged to participate in an Event with one Horse and covers the following:
- Stabling of one Horse for the duration of the Event (includes cleaning and disinfecting stables before the event, including between Events that are part of Tours, water and electricity in the stables, first bedding or a fixed amount of bedding depending on the type of event and 24 hour security services for the stables)
  - Use of all facilities at the Event (no infrastructure fees may be charged)
  - Right to participate in all Competitions in accordance with the conditions in the Schedule (no nomination fees or start fees may be charged)
  - Administrative/Office fees (includes all services relating to administration of the Event and running of the Competitions: data/results/timing services, bookkeeping and accreditation services)

## XV. ANNEXES

### 1. FEI ENTRY SYSTEM

Please fill the form below in order to provide you and the other members of your committee or your IT Providers access to the FEI Entry System.

**FEI ID<sup>1</sup>:** 10200799  
**Name\*:** Fontaneda  
**First Name\*:** Carolina  
**E-Mail\*:** vilamouraequestriancentre@gmail.com  
**Access Rights\*:** ☐ Admin<sup>2</sup> ☐ Consult<sup>3</sup>  
**Events<sup>4</sup>:** All

---

**FEI ID<sup>1</sup>:** 10093689  
**Name\*:** Matos  
**First Name\*:** Maria  
**E-Mail\*:** alubox@outlook.pt  
**Access Rights\*:** ☒ Admin<sup>2</sup> ☐ Consult<sup>3</sup>  
**Events<sup>4</sup>:** All

---

**FEI ID<sup>1</sup>:** 10075849  
**Name\*:** Reinas  
**First Name\*:** Joao  
**E-Mail\*:** jgreina@jgreinas.com  
**Access Rights\*:** ☐ Admin<sup>2</sup> ☒ Consult<sup>3</sup>  
**Events<sup>4</sup>:** All

---

<sup>1</sup> If already have an FEI user account.

<sup>2</sup> Provides you the required access to manage entries and substitutions and download entries/lists.

<sup>3</sup> You are just able to consult and download the entries/lists.

<sup>4</sup> Leave the field blank if the user deals with the entries of all events in the show.

**\* Mandatory Fields**

## **2. RESULTS**

In order to proceed with the results publication and for qualification purposes the FEI requires results **to be uploaded directly on the FEI Database** within two days after the conclusion of the event.

All relevant information, file format and tutorial can be found on this page:

<http://inside.fei.org/fei/your-role/organisers/xml-format>

If you or your provider are unable to produce the required files, results will be accepted by e-mail to [results@fei.org](mailto:results@fei.org), in the proper Excel or "XML" format immediately after the event.

Please refer to compulsory format for CSIs/CSIOs/Championships and Games; the file can be downloaded using the following link:

<https://inside.fei.org/fei/your-role/it-services/results/jumping-results-forms>

**All results must include FEI Passport Registration number of horses and FEI ID number of Riders.**

Please note that as per Art. 109.6 (GR): OCs of International Jumping Events must inform the FEI and NFs whose teams or individuals have taken part, of the results and prize money paid to each placed Athlete and team, within two (2) days following the Event, unless otherwise specified for qualification and ranking reasons as communicated by the FEI. Failure from OCs of International Events to provide the FEI with the appropriate result(s) and/or prize money information by the aforesaid deadline and/or in the aforesaid format shall entail a warning for the first violation and thereafter a fine of CHF 1'000.- per violation.

The FEI may request a copy of the official PDF result signed by the relevant Officials at the Event.

**THE APPENDIX (8 PAGES) IS PART OF THIS APPROVED AND SIGNED SCHEDULE AND MUST BE DISTRIBUTED TO ALL OFFICIALS AND NFs AND IS AVAILABLE TO OTHERS UPON REQUEST**